

BRONZE STUD CONNECTORS

TYPE SFFT

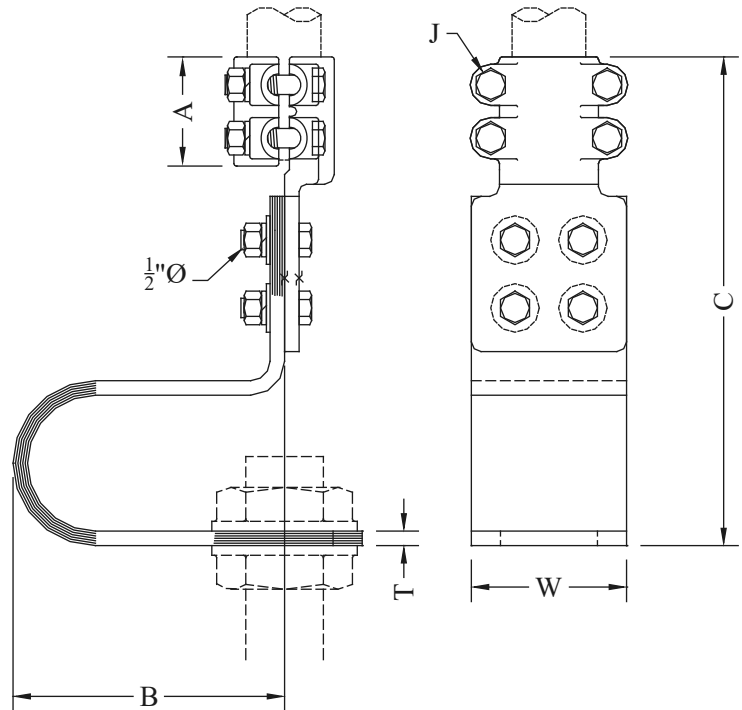
Expansion - Semi-Flex
Stud to Pipe

Castings: Electrical Bronze

Hardware: Silicon Bronze

All-bronze semi-flexible stud connector for threaded stud to standard pipe. Laminated copper strap allows some angular misalignment between pipe and stud. Not recommended as a supporting member. Laminated strap is soldered to form a solid tinned pad at each end.

*Bronze contact nut SHN available.



CATALOG NUMBER	STUD DIA./THD.	PIPE SIZE (NPS)	DIMENSIONS - INCHES						WEIGHT (POUNDS)
			A	B	C	J	T	W	
SFFT-2730	1-14	3/4	2-3/8	6-1/2	10-9/16	3/8	3/16	3	9.45
SFFT-2739		1	2-1/2	6-1/2	10-5/8	3/8	3/16	3	9.45
SFFT-2749		1-1/4	2-3/4	6-1/2	10-11/16	1/2	3/16	3	9.45
SFFT-2753		1-1/2	2-3/4	6-1/2	11	1/2	3/16	3	9.45
SFFT-3330	1-1/8 - 12	3/4	2-1/2	6-1/4	10-3/8	3/8	5/16	3	9.70
SFFT-3339		1	2	5-3/4	9-3/4	3/8	3/16	3	10.05
SFFT-3349		1-1/4	2-3/4	6-1/4	10-3/4	1/2	1/4	3	9.35
SFFT-3353		1-1/2	2-3/4	7	11-3/4	1/2	1/4	3	14.75
SFFT-3630	1-1/4 - 12	3/4	2-1/2	6-1/4	10-1/2	3/8	3/16	3	6.67
SFFT-3639		1	2-1/2	6-1/4	9-3/4	3/8	3/16	3	7.00
SFFT-3649		1-1/4	3	6-3/8	11-3/4	1/2	9/32	3	10.65
SFFT-3653		1-1/2	2-3/4	7	10-7/8	1/2	3/8	3	13.15
SFFT-3658		2	3	7	12	1/2	1/2	3	15.00

Continued on next page

BRONZE STUD CONNECTORS

TYPE SFFT Continued

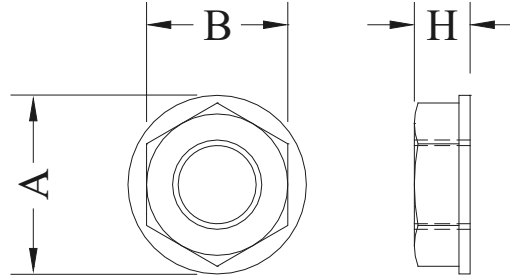
CATALOG NUMBER	STUD DIA./THD.	PIPE SIZE (NPS)	DIMENSIONS - INCHES						WEIGHT (POUNDS)
			A	B	C	J	T	W	
SFFT-4430	1-1/2 - 12	3/4	2	6	9-3/4	3/8	1/8	3	5.65
SFFT-4439		1	2	5-1/8	10	3/8	3/16	3	7.45
SFFT-4449		1-1/4	2-3/4	6-1/2	10-3/4	1/2	1/4	3	9.50
SFFT-4453		1-1/2	2-3/4	7	11	1/2	3/8	3	13.55
SFFT-4458		2	3-1/2	7	12-1/2	1/2	1/2	3	17.45
SFFT-4460		2-1/2	3-1/2	7	12-1/4	1/2	1/2	3	18.25
SFFT-4462		3	4	7-1/4	13-7/8	5/8	1/2	4	31.10
SFFT-5449	2 - 12	1-1/4	3	7	12-7/16	1/2	3/8	4	16.00
SFFT-5453		1-1/2	2-13/16	7	12-5/8	1/2	3/8	4	17.80
SFFT-5458		2	3-1/2	7-3/8	13-1/4	1/2	3/8	4	19.70
SFFT-5460		2-1/2	3-1/2	6-3/4	13-3/4	1/2	1/2	4	29.70
SFFT-5462		3	4	6-3/4	14-1/4	5/8	5/8	4	40.75

TYPE SHN

Contact Nut for Threaded Stud

Electrical bronze contact nut used in pairs for connecting types SFFT, SFFT90, ASFFT, and ASFFT90 to threaded copper stud. For stud threads other than listed, change last two digits of catalog number to number of threads required.

Casting: Electrical Bronze



CATALOG NUMBER	STUD DIA./THD.	DIMENSIONS - INCHES			WEIGHT (POUNDS)
		A	B	H	
SHN-14-18	5/8 - 18	1-1/2	1-1/4	5/16	0.25
SHN-18-16	3/4 - 16	2	1-5/8	3/4	0.50
SHN-21-14	7/8 - 14	2	1-3/4	1/2	0.40
SHN-27-14	1 - 14	2	1-5/8	3/4	0.50
SHN-33-12	1-1/8 - 12	2-1/4	1-13/16	13/16	0.50
SHN-36-12	1-1/4 - 12	2-1/2	2	7/8	0.75
SHN-44-12	1-1/2 - 12	3	2-3/8	15/16	1.35
SHN-50-12	1-3/4 - 12	3-1/4	2-5/8	1	2.00
SHN-54-12	2 - 12	3-3/4	3-1/8	1-1/8	2.50
SHN-57-12	2-1/4 - 12	4	3-3/8	1-1/8	2.75
SHN-59-12	2-1/2 - 12	4-1/4	3-5/8	1-1/8	3.00
SHN-61-12	3 - 12	4-1/2	4	1-1/8	3.50