

# BRONZE STUD CONNECTORS

## TYPE SCC2

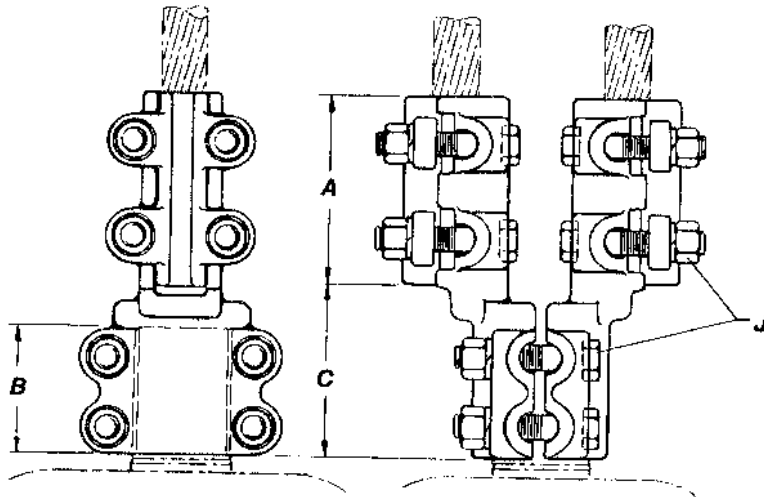
Stud to Two Cables

Castings: Electrical Bronze

Hardware: Silicon Bronze

Options: See Page 154

All- Bronze stud connector for copper stud to two cables and-on. Stud clamp is two-piece design. Reversible caps assure effective clamping over the full range of conductor sizes.



CATALOG NUMBER	STUD DIA. / THD.	CONDUCTOR RANGE	DIMENSIONS - INCHES				WEIGHT (POUNDS)
			A	B	C	J	
SCC2-2714	1 - 14	#4 SOL. - 300 MCM	CONTACT FACTORY FOR DETAILS				
SCC2-2720		1/0 SOL. - 500 MCM					
SCC2-3314	1-1/8 - 12	#4 SOL. - 300 MCM	CONTACT FACTORY FOR DETAILS				
SCC2-3320		1/0 SOL. - 500 MCM					
SCC2-3328		4/0 SOL. - 800 MCM	3-1/2	2-1/8	2-3/4	1/2	8.90
SCC2-3334		4/0 SOL. - 1000 MCM	CONTACT FACTORY FOR DETAILS				
SCC2-3614	1-1/4 - 12	#4 SOL. - 300 MCM	CONTACT FACTORY FOR DETAILS				
SCC2-3620		1/0 SOL. - 500 MCM					
SCC2-3634		4/0 SOL. - 1000 MCM					
SCC2-4414	1-1/2 - 12	#4 SOL. - 300 MCM	CONTACT FACTORY FOR DETAILS				
SCC2-4420		1/0 SOL. - 500 MCM					
SCC2-4434		4/0 SOL. - 1000 MCM	4	2-1/8	3-1/8	1/2	12.15
SCC2-5014	1-3/4 - 12	#4 SOL. - 300 MCM	CONTACT FACTORY FOR DETAILS				
SCC2-5020		1/0 SOL. - 500 MCM					
SCC2-5034		4/0 SOL. - 1000 MCM	3-1/2	2-1/8	2-7/8	1/2	10.05
SCC2-5414	2 - 12	#4 SOL. - 300 MCM	CONTACT FACTORY FOR DETAILS				
SCC2-5420		1/0 SOL. - 500 MCM					
SCC2-5434		4/0 SOL. - 1000 MCM	4	2-5/8	3-3/8	1/2	13.65
SCC2-5720	2-1/4 - 12	1/0 SOL. - 500 MCM	CONTACT FACTORY FOR DETAILS				
SCC2-5734		4/0 SOL. - 1000 MCM					
SCC2-5920	2-1/2 - 12	1/0 SOL. - 500 MCM	CONTACT FACTORY FOR DETAILS				
SCC2-5934		4/0 SOL. - 1000 MCM					
SCC2-6134	3 - 12	#4 STR - 1000 MCM	CONTACT FACTORY FOR DETAILS				