

EHV BUS COUPLERS

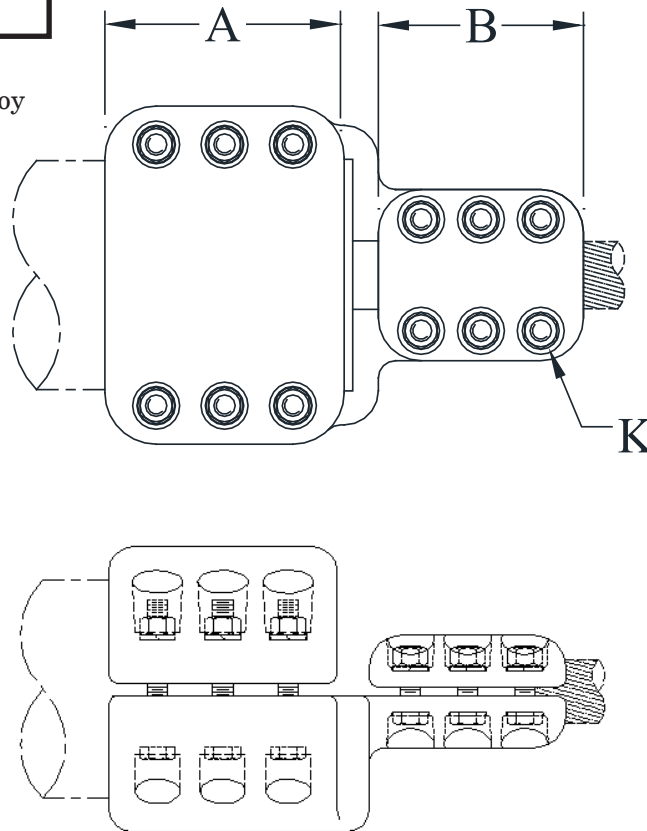
ALUMINUM • 345kV

TYPE ACTCHV

Bolted - Pipe To Cable

Castings: 356-T6 Aluminum
Clamping Hardware: Aluminum Alloy

Type ACTCHV is designed for corona-free service at 345kV
Not recommended as a tension connection.



CATALOG NUMBER	PIPE SIZE (NPS)	TAP CONDUCTOR		DIMENSION - INCHES		
		AAC	ACSR	A	B	K
ACTCHV-6052	2-1/2	2250 - 2500 MCM	2156 MCM	4-1/2	6	5/8
ACTCHV-6054		3000 MCM	--	4	6	
ACTCHV-6252	3	2250 - 2500 MCM	2156 MCM	4-1/2	6	5/8
ACTCHV-6254		3000 MCM	--	4-1/2	6	
ACTCHV-6256		3500 MCM	--	4-1/2	6-1/4	
ACTCHV-6352	3-1/2	2250 - 2500 MCM	2156 MCM	4-1/2	6	5/8
ACTCHV-6354		3000 MCM	--	4-1/2	6	
ACTCHV-6356		3500 MCM	--	5	6-1/4	
ACTCHV-6452	4	2250 - 2500 MCM	2156 MCM	4-1/2	6	5/8
ACTCHV-6454		3000 MCM	--	4-1/2	6	
ACTCHV-6456		3500 MCM	--	4-1/2	6-1/4	
ACTCHV-6752	5	2250 - 2500 MCM	2156 MCM	4-3/4	6	5/8
ACTCHV-6754		3000 MCM	--	8-1/4	6	
ACTCHV-6756		3500 MCM	--	7	6-1/4	