

ALUMINUM COUPLERS

TYPE WXCF

Welded Expansion
Pipe Main to Pipe Tap

Castings: 356-T6 Aluminum
Laminated Straps: 1100-0 Aluminum
Alignment Guide: 6061-T6 Aluminum

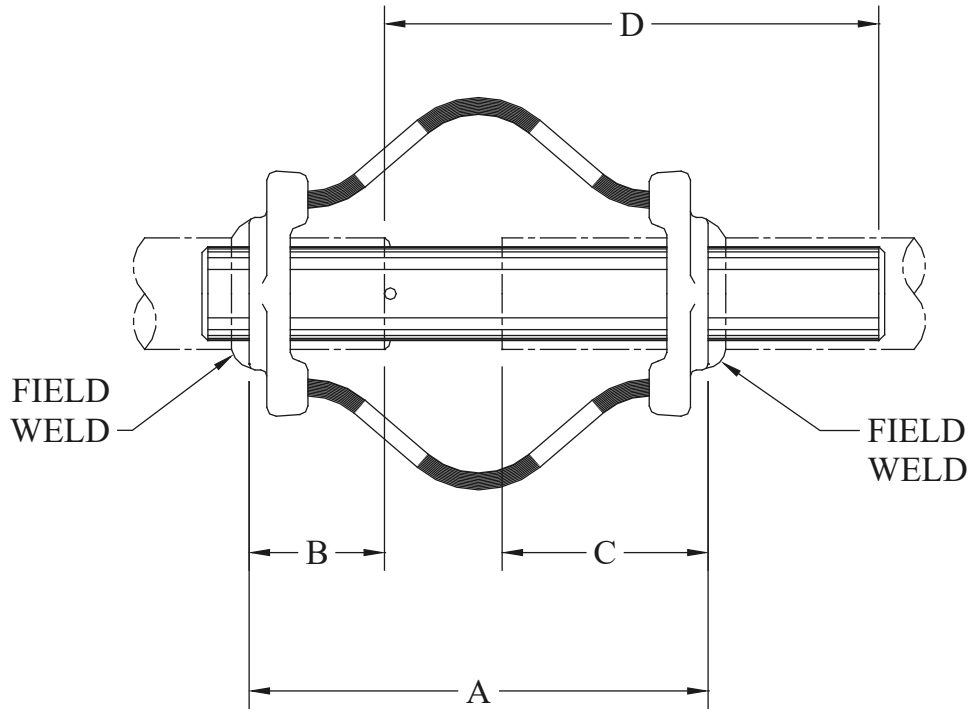
Aluminum alloy weldment expansion coupler for aluminum pipe connections. Features tubular aluminum alignment guide that is field welded to one end of pipe run.

To specify coupler for schedule 80 pipe add "H" to catalog number.

Examples: WXCF-3939H

To specify no alignment guide, add (-NG) to catalog number.

Examples: WXCF-3939-NG



CATALOG NUMBER	CONDUCTOR SIZE (NPS)		DIMENSIONS - INCHES				WEIGHT (POUNDS)
	PIPE MAIN	PIPE TAP	A	B	C	D	
WXCF-3939	1	1	9-1/2	2-1/2	4-1/8	9	3.15
WXCF-4949	1-1/8	1-1/8	9-1/2	2-1/2	4-1/8	9	3.65
WXCF-5353	1-1/2	1-1/2	9-1/2	2-1/2	4-1/8	9	3.95
WXCF-5858	2	2	9-3/4	2-7/8	4-3/8	10-5/8	5.75
WXCF-6060	2-1/2	2-1/2	9-3/4	2-7/8	4-3/8	10-1/2	8.60
WXCF-6262	3	3	12	3	5-1/2	12	10.90
WXCF-6363	3-1/2	3-1/2	11	3	5-1/2	12	13.60
WXCF-6464	4	4	12-1/4	3-1/8	5-5/8	12	18.15
WXCF-6767	5	5	17	3-3/4	8-1/4	13	31.70
WXCF-6969	6	6	16-1/2	4	8-1/2	14-1/4	46.40