

# ALUMINUM COUPLERS

## TYPE WLBI45 & 90

Angle Welded  
Pipe Main to Pipe Tap

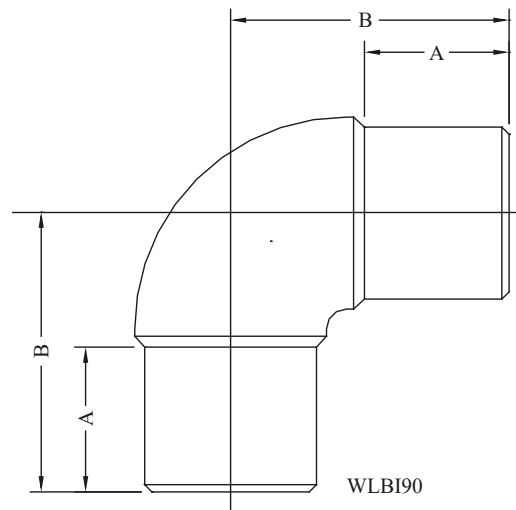
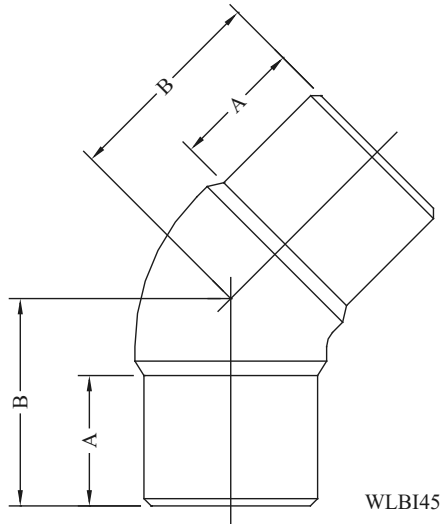
Aluminum alloy, weldment coupler for aluminum pipe connections at 45° or 90°.

Note: To specify coupler for schedule 80 pipe add "H" to catalog number.

Example: WLBI45-4949H

Also available with other angles. Please contact factory for specifications.

Casting: 356-T6 Aluminum



CATALOG NUMBER	PIPE SIZE	DIMENSIONS-INCHES		WEIGHT (POUNDS)
	MAIN & TAP (NPS)	A	B	
WLBI45-3939	1	1-1/2	2-1/4	0.50
WLBI45-4949	1-1/4	1-1/4	2-1/4	0.50
WLBI45-5353	1-1/2	1-5/8	2-9/16	0.50
WLBI45-5858	2	2	2-13/16	1.00
WLBI45-6060	2-1/2	2-3/8	3-7/16	1.00
WLBI45-6262	3	2-7/8	4-3/8	2.25
WLBI45-6363	3-1/2	2-7/8	4-5/16	2.50
WLBI45-6464	4	2-3/4	4-1/2	3.35
WLBI45-6767	5	4-1/2	6-7/16	8.50
WLBI45-6969	6	4-1/2	7-3/16	10.25
WLBI90-3939	1	1-1/2	2-3/4	0.50
WLBI90-4949	1-1/4	1-5/16	2-3/4	0.50
WLBI90-5353	1-1/2	1-5/8	3-3/8	0.75
WLBI90-5858	2	2	3-5/8	1.00
WLBI90-6060	2-1/2	2-1/2	4-7/16	2.00
WLBI90-6262	3	2-13/16	5-5/8	3.50
WLBI90-6363	3-1/2	2-3/4	6-1/8	4.25
WLBI90-6464	4	2-5/8	6-1/4	4.15
WLBI90-6767	5	4-3/4	8-5/8	10.00
WLBI90-6969	6	5	9-5/8	14.00