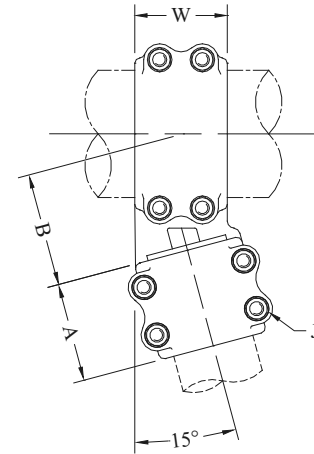


# BRONZE TEE CONNECTORS

## TYPE ATT15-BR

Angle Bolted  
Pipe Main to Pipe Tap

Bronze alloy angle tee copper pipe main to copper pipe tap connections. Clamping bolts have hex-stops for one-wrench installation. Also available with 10° tap. Example: ATT10-5858-BR



Castings: Electrical Bronze  
Hardware: Silicon Bronze

CATALOG NUMBER	CONDUCTOR SIZE (NPS)		DIMENSIONS - INCHES				WEIGHT (POUNDS)
	PIPE MAIN	PIPE TAP	A	B	W	J	
ATT15-3930-BR	1	3/4	2-3/8	2-1/8	3	1/2	8.25
ATT15-4930-BR	1-1/4	3/4	2-3/8	2-5/8	3	1/2	10.65
ATT15-4939-BR		1	3	2-7/8	3	1/2	9.90
ATT15-5330-BR	1-1/2	3/4	3	2-7/8	3-1/8	1/2	9.60
ATT15-5339-BR		1	3	2-7/8	3-1/8	1/2	9.85
ATT15-5349-BR		1-1/4	3	2-7/8	3-1/8	1/2	10.10
ATT15-5353-BR		1-1/4	3-1/8	2-7/8	3-1/8	1/2	10.35
ATT15-5839-BR	2	1	3	2-7/8	3-1/2	1/2	10.85
ATT15-5849-BR		1-1/4	3	2-7/8	3-1/2	1/2	12.70
ATT15-5853-BR		1-1/2	3-1/4	1-7/16	3-3/4	1/2	14.50
ATT15-5858-BR		2	3-1/2	3-1/16	3-1/2	1/2	13.45
ATT15-6049-BR	2-1/2	1-1/4	3-1/2	1	2-3/4	1/2	14.50
ATT15-6053-BR		1-1/2	3-1/2	3-1/8	2-3/4	1/2	14.00
ATT15-6058-BR		2	3-1/2	3-3/16	3-1/2	1/2	15.10
ATT15-6060-BR		2-1/2	3-1/2	1-7/8	3-1/2	5/8	12.75
ATT15-6253-BR	3	1-1/2	3-1/8	3-5/8	3-1/2	1/2	18.05
ATT15-6258-BR		2	3-1/2	3-1/2	3-1/2	1/2	19.35
ATT15-6260-BR		2-1/2	3-1/2	3-13/16	3-1/2	1/2	19.40
ATT15-6262-BR		3	4	4	4	5/8	31.00
ATT15-6358-BR	3-1/2	2	3-1/2	4	3-1/4	1/2	17.85
ATT15-6360-BR		2-1/2	3-1/2	4	3-1/4	1/2	20.65
ATT15-6362-BR		3	4	4-5/8	3-1/2	5/8	33.70
ATT15-6458-BR	4	2	3-1/2	4-1/4	3-1/4	1/2	16.90
ATT15-6460-BR		2-1/2	3-1/2	4-1/4	3-1/4	1/2	18.55
ATT15-6462-BR		3	4	4-5/16	4-1/2	5/8	28.25

\* Contact factory for other conductor combinations.

# SEFCOR