

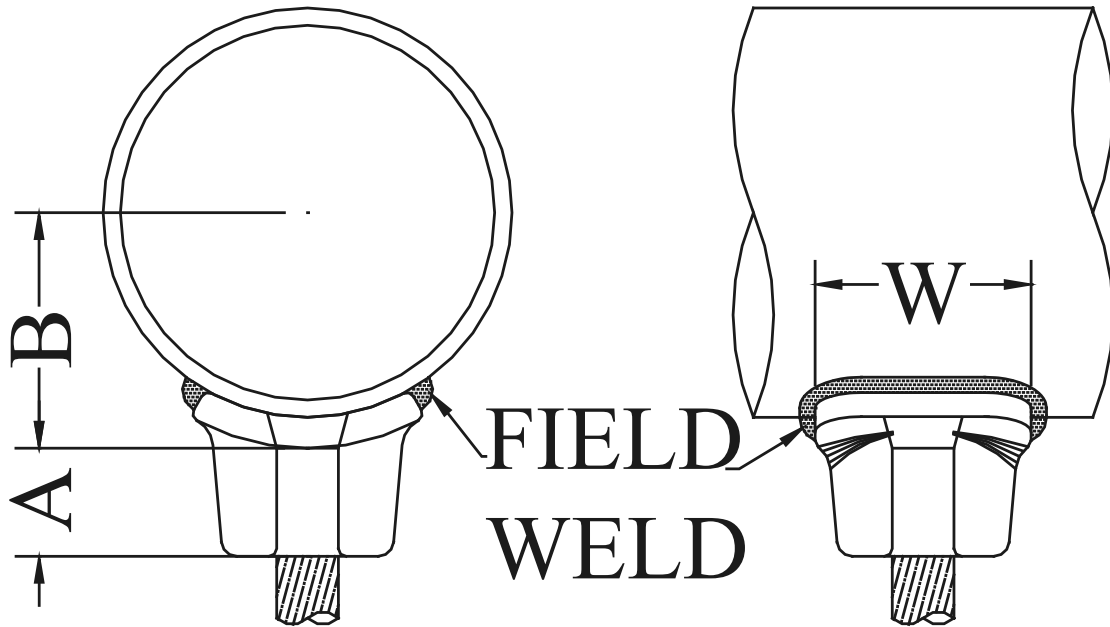
EHV TEE CONNECTORS

ALUMINUM • 345 KV

TYPE WTC Weld - Pipe To Cable

Type WTC is designed for corona-free service at 345 KV, or for 500 KV when paired for bundled conductors.

Casting: 356-T6 Aluminum



CATALOG NUMBER	PIPE SIZE (NPS)	CABLE SIZE	DIMENSIONS - INCHES		
		AAC	A	B	W
WTC-6035	2-1/2	1000 - 1033 MCM	2-7/8	1-3/4	1-1/2
WTC-6039		1250 - 1272 MCM	3	1-3/4	1-5/8
WTC-6235	3	1000 - 1033 MCM	2-7/8	2-1/8	1-1/2
WTC-6239		1250 - 1272 MCM	1-1/8	2-1/8	2-1/2
WTC-6241		1351 - 1431 MCM	1-1/2	2-3/8	2-3/4
WTC-6335	3-1/2	1000 - 1033 MCM	2-7/8	2-3/8	1-1/2
WTC-6339		1250 - 1272 MCM	3	2-3/8	1-5/8
WTC-6341		1351 - 1431 MCM	1-1/2	2-3/8	2-3/4
WTC-6435	4	1000 - 1033 MCM	2-7/8	2-5/8	1-1/2
WTC-6439		1250 - 1272 MCM	1-5/8	2-3/4	3
WTC-6441		1351 - 1431 MCM	1-5/8	2-3/4	3
WTC-6443		1500 - 1590 MCM	1-5/8	2-3/4	3
WTC-6739	5	1250 - 1272 MCM	1-3/8	3-1/8	3-1/4
WTC-6741		1351 - 1431 MCM	1-5/8	3-1/4	3-1/4
WTC-6743		1500 - 1590 MCM	1-5/8	3-1/4	3-1/4
WTC-6746		1750 - 1800 MCM	1-5/8	3-1/4	3-1/4

SEFCOR