

EHV TEE CONNECTORS

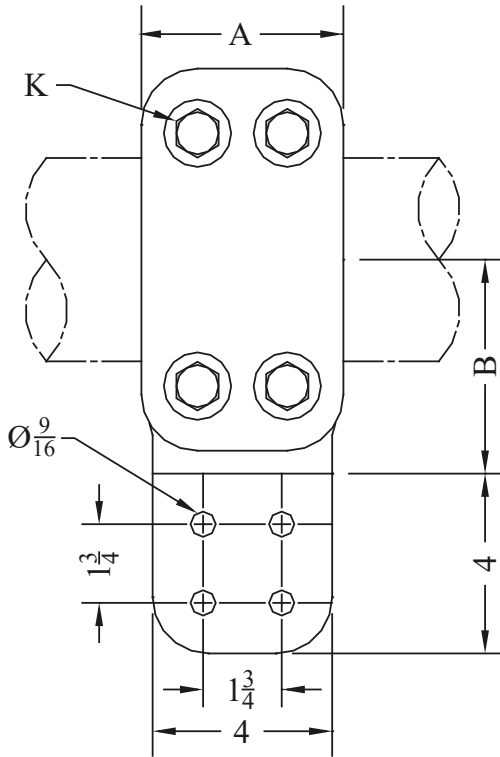
ALUMINUM • 345 - 500 KV

TYPE ATFHV TYPE ATRHV

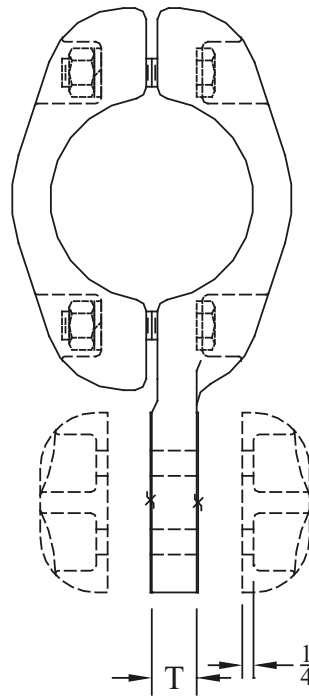
Bolted - Pipe To Flat

Types ATFHV and ATRHV are designed for corona-free service at the voltage levels shown. The catalog numbers below are without pad hardware shields. If shields are required, add suffix -HS. Example: ATFHV-67-4B-HS. Shipped with inhibitor-coated contact surfaces.
NOTE: See hardware shields AA-1094.

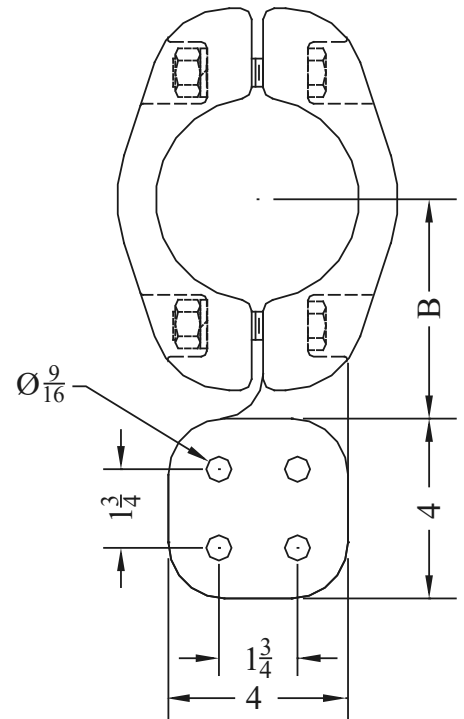
Castings: 356-T6 Aluminum
Clamping Hardware: Aluminum Alloy



TYPE ATFHV



TYPE ATRHV



CATALOG NUMBER		PIPE SIZE (NPS)	MAX. KV	DIMENSIONS - INCHES			
TYPE ATFHV	TYPE ATRHV			A	B	K	T
ATFHV-58-4B	ATFRHV-58-4B	2	345	4	3-3/8	1/2	1/2
ATFHV-60-4B	ATFRHV-60-4B	2-1/2	345	4	3-3/4	5/8	1
ATFHV-62-4B	ATFRHV-62-4B	3	500	4-1/2	4	5/8	1
ATFHV-63-4B	ATFRHV-63-4B	3-1/2	500	5	4-1/4	5/8	1
ATFHV-64-4B	ATFRHV-64-4B	4	500	4-1/2	4-3/4	5/8	1
*ATFHV-67-4B	ATFRHV-67-4B	5	500	8-1/4	5-1/8	5/8	1
*ATFHV-69-4B	ATFRHV-69-4B	6	500	7	5-1/2	5/8	1

*Six clamping bolts on pipe