

EHV TEE CONNECTORS

ALUMINUM • 345 - 500kV

TYPE ACRCT-HV

Bolted Tee - Cable To Cable

Type ACRCT-HV is designed for corona-free service at a voltage level equal to or higher than the conductor rating.

Used for single or bundled-conductor taps.

Finished contact surfaces are factory-coated with an oxidation inhibitor.

Castings: 356-T6 Aluminum

Clamping Hardware: Aluminum Alloy

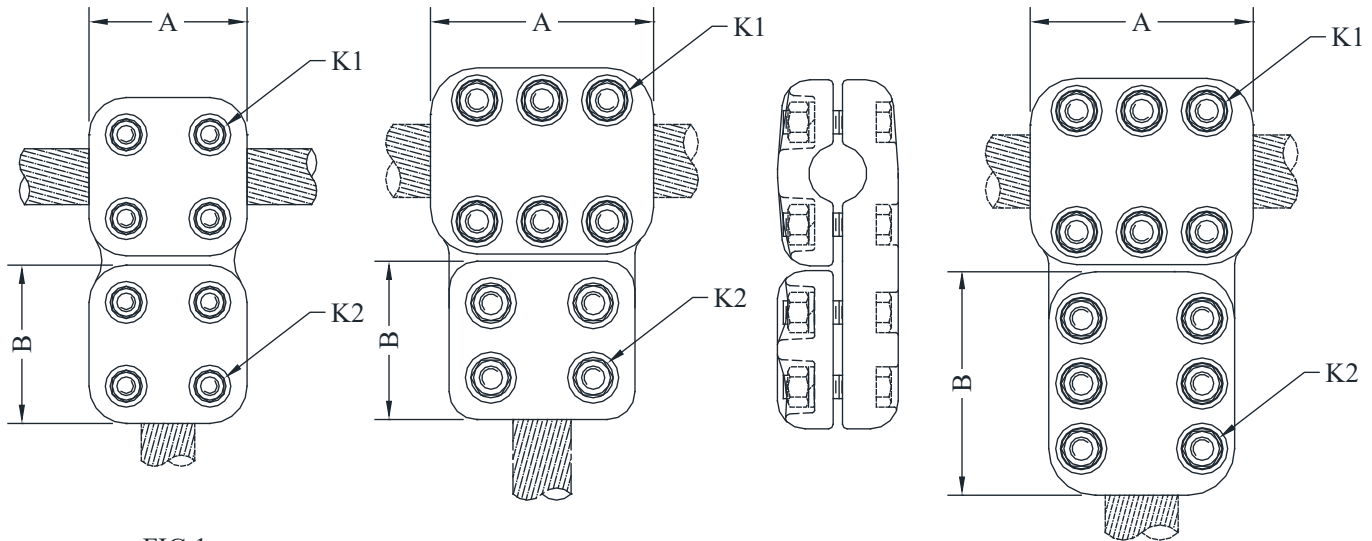


FIG 1.

FIG 2.

FIG 3.

CATALOG NUMBER	FIG. NO.	CABLE RUN (MCM)		CABLE TAP (MCM)		DIMENSIONS - INCHES			
		AAC	ACSR	AAC	ACSR	A	B	K1	K2
ACRCT-HV-3434	1	1000	795	1000	795	3-3/4	3-3/4	1/2	1/2
ACRCT-HV-3535	1	1033	874	1033	874	3-3/4	3-3/4	1/2	1/2
ACRCT-HV-3636	1	1113	954	1113	954	4-1/8	4-1/8	1/2	1/2
ACRCT-HV-3939	1	1272	1113	1272	1113	4-1/8	4-1/8	1/2	1/2
ACRCT-HV-4141	1	1431	1272	1431	1272	4-1/4	4-1/4	1/2	1/2
ACRCT-HV-4334	1	1590	1431	954	795	4-1/4	3-3/4	5/8	1/2
ACRCT-HV-4343	1	1590	1431	1590	1431	4-1/4	4-1/4	5/8	5/8
ACRCT-HV-4646	1	1800	1590	1800	1590	4-1/4	4-1/4	5/8	5/8
ACRCT-HV-4949	3	2250	2167	2250	2167	6	6	5/8	5/8
ACRCT-HV-5243	2	2500	2156	1590	1431	6	4-1/4	5/8	5/8
ACRCT-HV-5246	2	2500	2156	1800	1590	6	4-1/4	5/8	5/8
ACRCT-HV-5252	3	2500	2515	2500	2515	6	6	5/8	5/8
ACRCT-HV-5652	3	3500	----	2500	2156	6-1/4	6	5/8	5/8
ACRCT-HV-5656	3	3500	----	3500	----	6-1/4	6-1/4	5/8	5/8