

ALUMINUM TEE CONNECTORS

TYPE WTF

Weldment Tee
Pipe Main to Flat Pad

Castings: 356-T6 Aluminum

Aluminum alloy weldment, range taking tee, for connecting aluminum pipe main to flat pad. NEMA hole drilling is standard. Contact sealant is recommended on pad after welding. Pad is finished on both sides.
NOTE: Not intended for full current application.

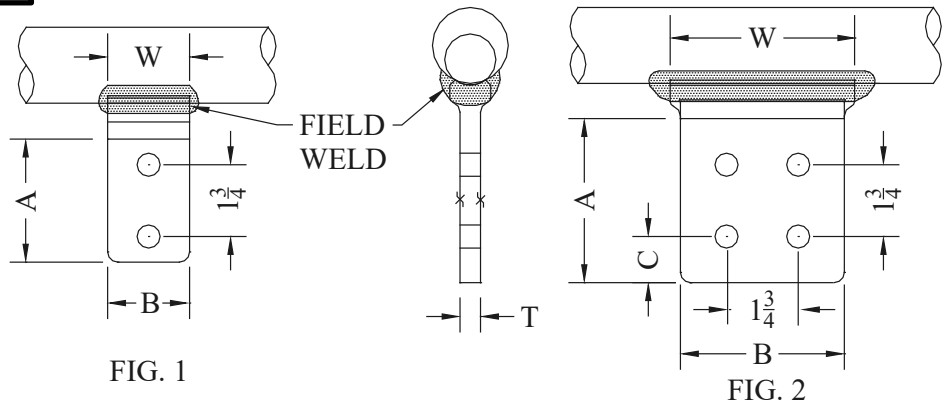


FIG. 1

FIG. 2

CATALOG NUMBER	FIG. NO.	PIPE SIZE	DIMENSIONS - INCHES					WEIGHT (POUNDS)
			A	B	C	T	W	
WTF-3960-2B	1	1" - 2-1/2" NPS	3	2	5/8	13/16	2	0.85
WTF-3960-4A	2		3	3	5/8	13/16	3	1.30
WTF-3960-4B	2		4	4	1-1/8	1/2	4-1/2	1.00
WTF-6269-2B	1	3" - 6" NPS	3	2	5/8	3/4	2-1/2	0.75
WTF-6269-4A	2		3	3	5/8	3/4	3-1/2	1.00
WTF-6269-4B	2		4	4	1-1/8	3/4	5	1.70

TYPE WTFR

Weldment Tee
Pipe Main to Flat Pad
90° Transverse Pad

Castings: 356-T6 Aluminum

Aluminum alloy weldment, range taking tee, for connecting aluminum pipe main to flat pad. NEMA hole drilling is standard. Contact sealant is recommended on pad after welding. Pad is finished on both sides.
NOTE: Not intended for full current application. See page 123 for full current fittings.

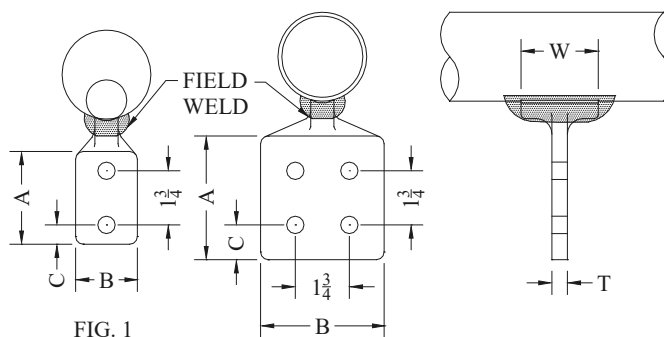


FIG. 1

FIG. 2

CATALOG NUMBER	FIG. NO.	PIPE SIZE	DIMENSIONS - INCHES					WEIGHT (POUNDS)
			A	B	C	T	W	
WTFR-3960-2B	1	1" - 2-1/2" NPS	3	2	5/8	3/4	2-3/4	0.50
WTFR-3960-4A	2		3	3	5/8	3/4	2-3/4	1.00
WTFR-3960-4B	2		4	4	1-1/8	1/2	2-1/2	1.25
WTFR-6269-2B	1	3" - 6" NPS	3	2	5/8	3/4	1-1/4	1.00
WTFR-6269-4A	2		3	3	5/8	3/4	3	1.00
WTFR-6269-4B	2		4	4	1-1/8	3/4	4	1.35