

TYPE ATRCT - Continued

CATALOG NUMBER	CONDUCTOR RANGE		DIMENSIONS - INCHES			WEIGHT (POUNDS)	
	PIPE MAIN	CABLE TAP		A	W		J
		AAC	ACSR				
ATRCT-6013	2-1/2	#4 - 266 MCM	#4 - 4/0	3	3-1/2	1/2	3.35
ATRCT-6020		4/0 - 500 MCM	4/0 - 397 MCM	3-1/2	3-1/2	1/2	3.65
ATRCT-6024		350 - 650 MCM	336 - 556 MCM	4	3-1/2	1/2	3.90
ATRCT-6034		550 - 1000 MCM	477 - 795 MCM	4	3-1/2	1/2	3.90
ATRCT-6039		900 - 1300 MCM	715 - 1113 MCM	4-1/4	3-1/2	1/2	4.20
ATRCT-6043		1250 - 1590 MCM	1113 - 1431 MCM	4-1/2	3-1/2	1/2	4.70
ATRCT-6213	3	#4 - 266 MCM	#4 - 4/0	3	3-1/2	1/2	2.85
ATRCT-6220		4/0 - 500 MCM	4/0 - 397 MCM	3-1/2	3	1/2	3.05
ATRCT-6224		350 - 650 MCM	336 - 556 MCM	4	3-1/2	1/2	5.25
ATRCT-6234		550 - 1000 MCM	477 - 795 MCM	4	3-1/2	1/2	5.25
ATRCT-6239		900 - 1300 MCM	715 - 1113 MCM	4-1/4	3-1/2	1/2	5.30
ATRCT-6243		1250 - 1590 MCM	1113 - 1431 MCM	4-1/2	4	5/8	6.85
ATRCT-6320	3-1/2	4/0 - 500 MCM	4/0 - 397 MCM	3-1/2	3-1/4	1/2	4.45
ATRCT-6324		350 - 650 MCM	336 - 556 MCM	4	3-1/4	1/2	4.20
ATRCT-6334		550 - 1000 MCM	477 - 795 MCM	4	3-1/4	1/2	4.75
ATRCT-6339		900 - 1300 MCM	715 - 1113 MCM	4-1/4	3-1/4	1/2	5.05
ATRCT-6343		1250 - 1590 MCM	1113 - 1431 MCM	4-1/2	4-3/8	5/8	8.05
ATRCT-6420	4	4/0 - 500 MCM	4/0 - 397 MCM	3-1/2	3-1/4	1/2	5.50
ATRCT-6424		350 - 650 MCM	336 - 556 MCM	4	3-1/4	1/2	6.20
ATRCT-6434		550 - 1000 MCM	477 - 795 MCM	4	3-1/4	1/2	4.60
ATRCT-6439		900 - 1300 MCM	715 - 1113 MCM	4-1/4	3-1/4	1/2	6.30
ATRCT-6443		1250 - 1590 MCM	1113 - 1431 MCM	4-1/2	4-1/2	5/8	9.40
ATRCT-6449		1500 - 2000 MCM	1351 - 1780 MCM	4-1/2	4-1/2	1/2	7.75

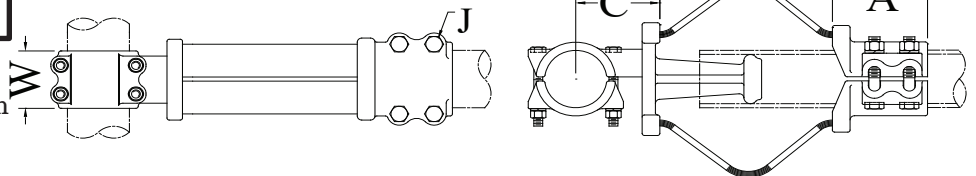
*Consult manufacturer for further details or unlisted applications.

TYPE AXTF

Bolted Expansion
Pipe Main to Pipe Tap

Castings: 356-T6 Aluminum
Laminated Straps: 1100-0 Aluminum
Hardware: Aluminum Alloy

Aluminum alloy expansion tee for aluminum pipe connections. Clamping bolts have hex-stops for one-wrench installation. Contact sealant is recommended. Add suffix (H) to catalog number for SCH 80 pipe.
Example: AXTF-6060H



CATALOG NUMBER	CONDUCTOR SIZE (NPS)		DIMENSIONS - INCHES					WEIGHT (POUNDS)
	PIPE MAIN	PIPE TAP	A	B	C	W	J	
AXTF-5353	1-1/2	1-1/2	4-3/8	6-1/2	4-1/4	3-1/8	1/2	7.60
AXTF-5858	2	2	4-3/4	4	4-3/4	3-1/2	1/2	7.40
AXTF-6060	2-1/2	2-1/2	4-3/4	7-3/4	5-1/2	3-1/2	1/2	14.85
AXTF-6262	3	3	5-3/8	9-1/2	4-3/4	3-1/2	5/8	19.30
AXTF-6464	4	4	5-3/4	7	4-1/2	5-1/8	5/8	24.60

SEFCOR