

ALUMINUM TEE CONNECTORS

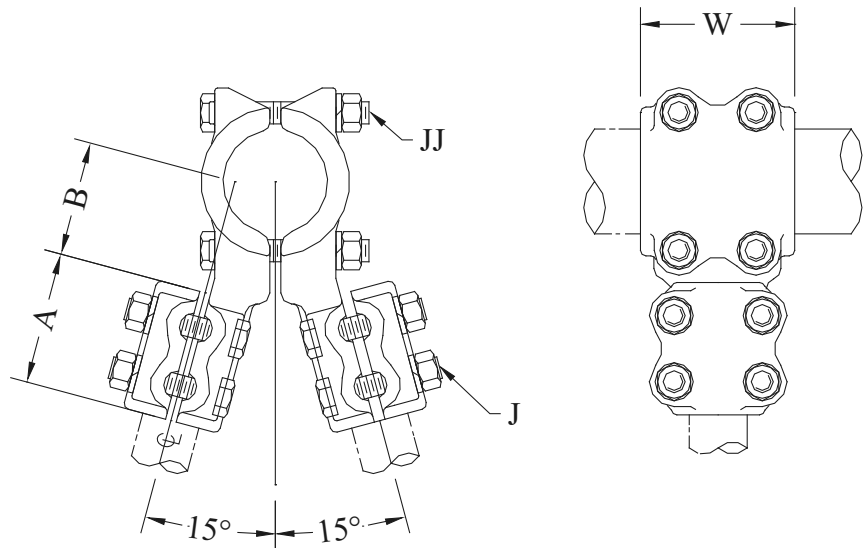
TYPE AVT15

Angle Bolted
Pipe Main to Two Pipe Tap

Castings: 356-T6 Aluminum
Hardware: Aluminum Alloy

Aluminum alloy angle tee for aluminum pipe main to two aluminum pipe tap connections at 15°. Clamping bolts have hex-stops for one-wrench installation. Contact sealant is recommended.

Also available with 10° tap. Example: AVT10-5858



CATALOG NUMBER	CONDUCTOR SIZE (NPS)		DIMENSIONS - INCHES					WEIGHT (POUNDS)
	PIPE MAIN	PIPE TAP	A	B	W	J	JJ	
AVT15-3930	1	3/4	2-3/8	2	3	1/2	1/2	3.85
AVT15-3939		1	3	2	3	1/2	1/2	4.00
AVT15-4930	1-1/4	3/4	3	2-7/8	3-1/2	1/2	1/2	4.15
AVT15-4939		1	3	2-7/8	3-1/2	1/2	1/2	4.65
AVT15-5330	1-1/2	3/4	3	2-7/8	3-1/2	1/2	1/2	4.45
AVT15-5339		1	3	2-7/8	3-1/2	1/2	1/2	4.75
AVT15-5349		1-1/4	3	2-7/8	3-1/2	1/2	1/2	5.05
AVT15-5839	2	1	3	2-7/8	3-1/2	1/2	1/2	4.95
AVT15-5849		1-1/4	3	3	3-1/2	1/2	1/2	5.20
AVT15-5853		1-1/2	3	2-3/4	3-1/2	1/2	1/2	6.55
AVT15-6049	2-1/2	1-1/4	3	2-5/8	3-1/2	1/2	1/2	6.15
AVT15-6053		1-1/2	3-1/8	2-7/8	3-1/2	1/2	1/2	6.65
AVT15-6058		2	3-1/2	2-7/8	3-1/2	1/2	1/2	7.15
AVT15-6253	3	1-1/2	3-1/8	3-1/2	3-1/2	1/2	1/2	7.15
AVT15-6258		2	3-1/2	3-1/2	3-1/2	1/2	1/2	7.60
AVT15-6358	3-1/2	2	3-1/2	3-1/4	3-1/4	1/2	1/2	9.10
AVT15-6360		2-1/2	3-1/2	3-5/8	3-1/4	1/2	1/2	11.10
AVT15-6362		3	4	4-1/4	4	5/8	5/8	21.30
AVT15-6458	4	2	3-1/2	4-1/4	4	1/2	5/8	13.40
AVT15-6460		2-1/2	3-1/2	4-1/4	4-1/2	1/2	5/8	15.50
AVT15-6462		3	4	4-1/4	4	5/8	5/8	20.05

* Contact factory for other conductor combinations.