

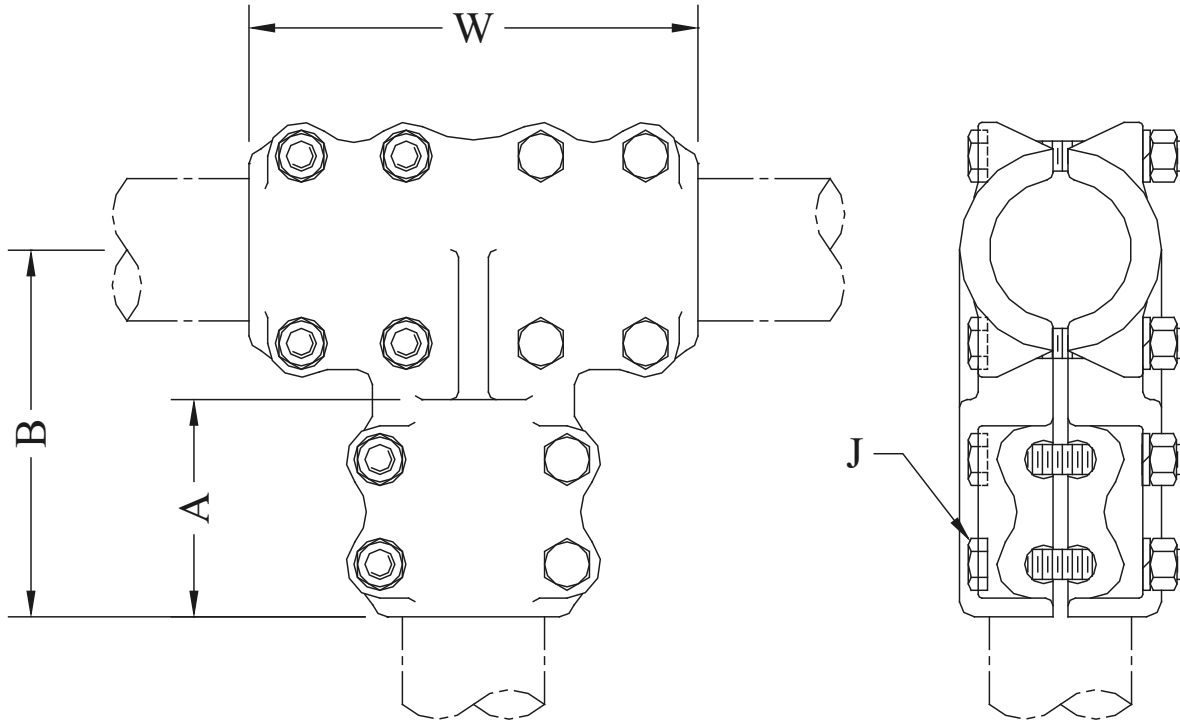
# ALUMINUM TEE CONNECTORS

## TYPE ATCXT

Straight Bolted  
Tee / Coupler Pipe to Pipe

Aluminum alloy tee / coupler for coupling aluminum pipe with 90° aluminum pipe tap. Clamping bolts have hex-stops for one-wrench installation.

Castings: 356-T6 Aluminum  
Hardware: Aluminum Alloy



CATALOG NUMBER	CONDUCTOR SIZE (NPS)		DIMENSIONS - INCHES				WEIGHT (POUNDS)
	PIPE MAIN	PIPE TAP	A	B	W	J	
ATCXT-3030	3/4	3/4	2-9/16	4	5-3/8	1/2	3.35
ATCXT-3939	1	1	2-3/4	4-5/8	6-1/8	1/2	3.85
ATCXT-4949	1-1/4	1-1/4	3-1/4	5-1/4	7	1/2	3.85
ATCXT-5353	1-1/2	1-1/2	2-3/4	4-7/8	6-1/2	1/2	5.55
ATCXT-5858	2	2	3-5/8	6-1/8	7-1/2	1/2	7.05
ATCXT-6060	2-1/2	2-1/2	3-3/8	6-1/16	7-5/8	1/2	11.55
ATCXT-6262	3	3	4	7-3/8	10-1/8	5/8	13.70
ATCXT-6363	3-1/2	3-1/2	5-1/4	8-9/16	11	5/8	15.70
ATCXT-6464	4	4	4-1/2	13-1/4	12	5/8	27.30
ATCXT-6767	5	5	7	11-5/8	14	5/8	45.70
ATCXT-6969	6	6	7	17-1/8	12-3/4	5/8	48.65

\* Contact factory for other conductor combinations.