

EHV BUS SUPPORTS

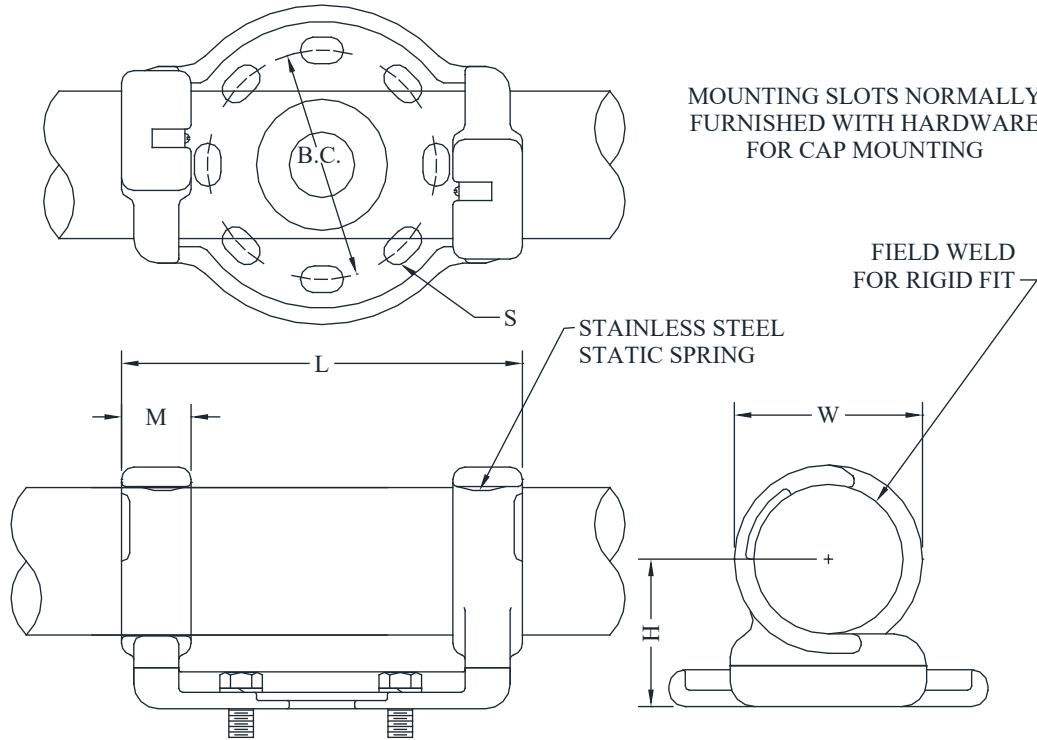
TYPE ASWH-EHV

Weldment - Slide or Rigid
Pipe To Insulator

Type ASWH-EHV hook-on bus supports are designed for corona-free service at voltage levels indicated in table below. Normally used for slip-fit, rigid fit is effected by welding each end as shown. All assemblies include static springs.

Castings: 356-T6 Aluminum

Mounting Hardware: Galvanized Steel



CATALOG NUMBER	PIPE SIZE (NPS)	B.C.	MAX. KV	DIMENSIONS - INCHES					WEIGHT (POUNDS)
				H	L	M	S	W	
ASWH-58-5-EHV	2	5	345	2-3/4	10-1/8	2	11/16 x 1-1/16	3-1/2	5.90
ASWH-58-7-EHV		7	345	2-3/4	12-1/8	2	13/16 x 1-5/16	3-1/2	7.65
ASWH-60-5-EHV	2-1/2	5	345	3-1/8	10-1/8	2	11/16 x 1-1/16	4	6.20
ASWH-60-7-EHV		7	345	3-1/8	12-1/8	2	13/16 x 1-5/16	4	7.95
ASWH-62-5-EHV	3	5	345	3-5/8	10-1/8	2	11/16 x 1-1/16	4-1/2	6.40
ASWH-62-7-EHV		7	500	3-5/8	12-1/8	2	13/16 x 1-5/16	4-1/2	8.25
ASWH-63-5-EHV	3-1/2	5	500	4	10-1/4	2-1/8	11/16 x 1-1/16	5-5/16	7.55
ASWH-63-7-EHV		7	500	4	12-1/4	2-1/8	13/16 x 1-5/16	5-5/16	9.25
ASWH-64-5-EHV	4	5	500	4-1/2	10-1/4	2-1/8	11/16 x 1-1/16	5-3/4	8.05
ASWH-64-7-EHV		7	500	4-1/2	12-1/4	2-1/8	13/16 x 1-5/16	5-3/4	9.75
ASWH-67-5-EHV	5	5	500	5	10-1/4	2-1/8	11/16 x 1-1/16	7	9.05
ASWH-67-7-EHV		7	500	5	12-1/4	2-1/8	13/16 x 1-5/16	7	10.75
ASWH-69-5-EHV	6	5	500	5-1/2	12-7/8	2-1/4	11/16 x 1-1/16	8-1/8	9.40
ASWH-69-7-EHV		7	500	5-1/2	12-3/8	2-1/4	13/16 x 1-5/16	8-1/8	10.75