

# ALUMINUM MISCELLANEOUS

## AA-1156 & AA-1467

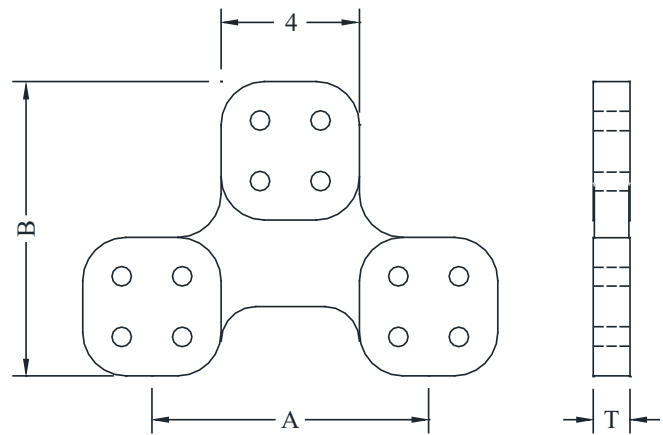
Horizontal Bifurcating  
Flat to Flat

Aluminum alloy bifurcating terminal adapter.

Designed for corona-free service at 500kV when used with hardware shields.

Hardware shields are not included with these catalog numbers.

Casting: 356-T6 Aluminum



CATALOG NUMBER	DIMENSIONS - INCHES			WEIGHT (POUNDS)
	A	B	T	
AA-1156	4-1/8	8-1/2	1	4.25
AA-1467	8	8-1/2	1	6.50

## TYPE WRLA

Welded Rope-Lay Assembly  
Flat to Flat

Aluminum flexible rope-lay assemblies for connecting flat pads.

NEMA drilling is standard. Contact sealant is recommended.

Assemblies are also available with angled terminals.

Consult manufacturer for further details or unlisted applications.

Note: Replace (L) in the catalog numbers listed below with the length required.

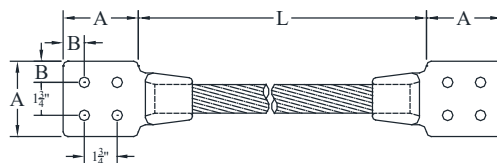


FIG. 1



FIG. 2

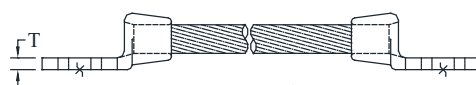


FIG. 3

CATALOG NUMBER	FIG. NO.	DIMENSIONS - INCHES			AMPERE RATING
		A	B	T	
WRLA-1272-4A-(L)	1	3	5/8	5/8	1000
WRLA-1272-4B-(L)	1	4	1 1/8	5/8	1000
WRLA2-1272-4B-(L)	2	4	1 1/8	3/4	2000
WRLA3-1272-4B-(L)	3	4	1 1/8	1	3300