

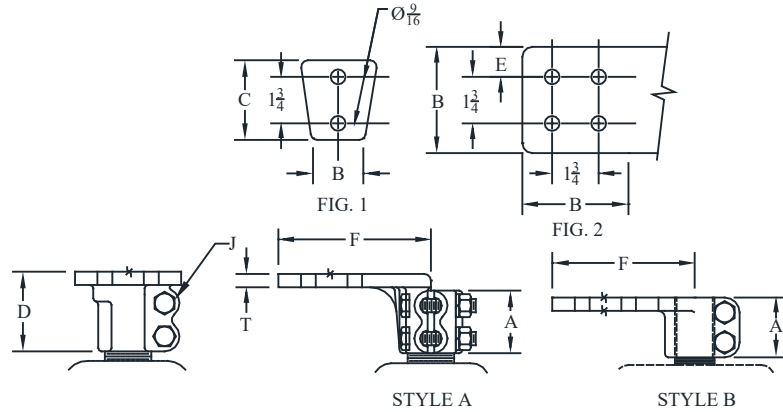
BRONZE STUD CONNECTORS

SNFT90

Stud to Flat 90° Horizontal

Castings: Electrical Bronze
Hardware: Silicon Bronze
Options: See page 153

All-bronze stud connector for copper stud to flat, horizontal NEMA pad for 90° take-off. Contact pad is finished on side shown.



CATALOG NUMBER	STUD DIA. / THD.	FIG. NO.	STYLE	DIMENSIONS - INCHES								WEIGHT (POUNDS)
				A	B	C	D	E	F	J	T	
SNFT90-14-2B	5/8 - 11	1	B	2	2	3	2	5/8	3-3/4	3/8	1/4	1.45
SNFT90-14-4A		2	B	2	3	3	2	5/8	3-3/4	3/8	1/4	1.50
SNFT90-18-2B	3/4 - 16	1	B	2	2	3	2	5/8	3-3/4	1/2	5/16	1.00
SNFT90-18-4A		2	B	2-1/8	3	3	2-1/8	5/8	4	1/2	1/2	2.35
SNFT90-27-2B	1 - 14	1	A	2-1/8	2	3	2-7/8	5/8	4-5/8	1/2	1/2	5.00
SNFT90-27-4A		2	A	2-1/8	3	3	2-7/8	5/8	4-1/8	1/2	1/2	5.00
SNFT90-27-4B		2	A	2-1/8	4	4	2-7/8	1-1/8	4-5/8	1/2	1/2	5.00
SNFT90-33-2B	1-1/8 - 12	1	A	2-1/8	2	3	2-7/8	5/8	4-5/8	1/2	1/2	5.00
SNFT90-33-4A		2	A	2-1/8	3	3	2-7/8	5/8	4-1/8	1/2	1/2	5.00
SNFT90-33-4B		2	A	2-1/8	4	4	2-7/8	1-1/8	4-5/8	1/2	1/2	5.00
SNFT90-36-2B	1-1/4 - 12	1	B	2-1/8	2	3	2-1/8	5/8	4	1/2	1/2	6.15
SNFT90-36-4A		2	B	2-1/8	3	3	2-1/8	1-1/8	4	1/2	1/2	6.15
SNFT90-36-4B		2	B	2-1/8	4	4	2-1/8	1-1/8	5	1/2	1/2	6.15
SNFT90-44-4A	1-1/2 - 12	2	B	2-1/4	3	3	2-1/4	5/8	4-3/8	1/2	1/2	6.90
SNFT90-44-4B		2	A	2-1/8	4	4	2-3/4	1-1/8	4-1/2	1/2	1/2	6.90
SNFT90-44-4B-FF		2	B	2-1/4	4	4	2-1/4	1-1/8	5-3/8	1/2	1/2	6.90
SNFT90-50-4A	1-3/4 - 12	2	A	2-3/8	3	3	3-1/4	5/8	4-3/8	1/2	1/2	8.45
SNFT90-50-4B		2	A	2-3/8	4	4	3-1/4	1-1/8	5-3/4	1/2	1/2	8.45
SNFT90-54-4A	2 - 12	2	A	2-1/2	3	3	3-1/8	5/8	4-7/8	1/2	1/2	7.00
SNFT90-54-4B		2	A	2-1/2	4	4	3-1/8	1-1/8	5-3/8	1/2	1/2	7.00
SNFT90-57-4A	2-1/4 - 12	2	B	2-3/4	3	3	2-5/8	5/8	4-7/8	1/2	1/2	8.75
SNFT90-57-4B		2	B	2-5/8	4	4	2-5/8	1-1/8	5-3/8	1/2	1/2	9.50
SNFT90-59-4A	2-1/2 - 12	2	B	2-5/8	3	3	2-5/8	5/8	4-7/8	1/2	1/2	9.50
SNFT90-59-4B		2	B	2-5/8	4	4	2-5/8	1-1/8	5-3/8	1/2	1/2	9.50
SNFT90-61-4A	3 - 12	2	B	3-1/4	3	3	3-1/4	5/8	5-1/2	5/8	3/4	15.50
SNFT90-61-4B		2	B	3-1/4	4	4	3-1/4	1-1/8	6-1/4	5/8	3/4	15.50
SNFT90-615-4A	3-1/4 - 12	2	B	3-1/4	3	3	3-1/4	5/8	5-1/4	5/8	3/4	15.50
SNFT90-615-4B		2	B	3-1/4	4	4	3-1/4	1-1/8	6-1/4	5/8	3/4	15.50
SNFT90-63-4B	4 - 12	2	B	3-1/4	4	4	3-1/4	1-1/5	6-7/8	5/8	1	20.00