

# EHV BUS SUPPORTS

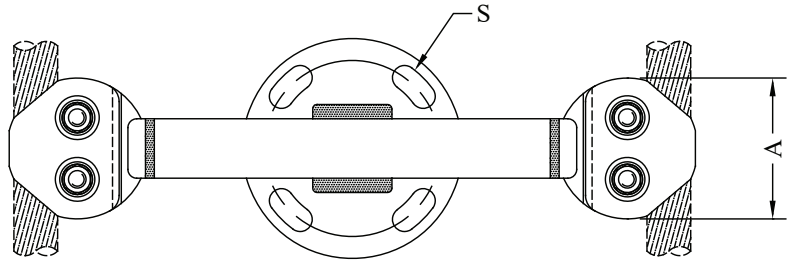
ALUMINUM • 345 - 500kV

## TYPE ASCAHV

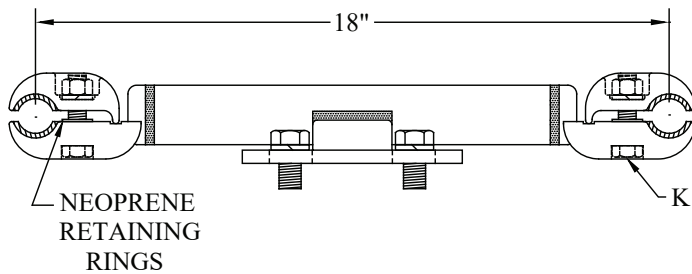
Bolted - Two Cable  
To Insulator

Castings: 356-T6 Aluminum  
Support Arm: 6061-T6 Aluminum  
Clamping Hardware: Aluminum Alloy  
Mounting Hardware: Galvanized Steel

Type ASCAHV is designed for corona-free service at 345kV or 500kV within the limits of the bundled conductor.  
Cable spacing other than the 18-inch shown is available when specified.



NORMALLY SUPPLIED WITH  
HARDWARE  
FOR CAP MOUNTING



| CATALOG NUMBER | CONDUCTOR DIAMETER | BOLT CIRCLE | MAX KV | DIMENSIONS - INCHES |     |               | WEIGHT (POUNDS) |
|----------------|--------------------|-------------|--------|---------------------|-----|---------------|-----------------|
|                |                    |             |        | A                   | K   | S             |                 |
| ASCAHV-32-5    | 1.026 - 1.094      | 5           | 345    | 4                   | 1/2 | 11/16 x 1     | 5.50            |
| ASCAHV-35-5    | 1.108 - 1.196      | 5           | 345    | 4                   | 1/2 | 11/16 x 1     | 5.50            |
| ASCAHV-38-5    | 1.212 - 1.293      | 5           | 345    | 4                   | 1/2 | 11/16 x 1     | 6.00            |
| ASCAHV-41-5    | 1.300 - 1.382      | 5           | 345    | 4                   | 1/2 | 11/16 x 1     | 6.25            |
| ASCAHV-43-5    | 1.385 - 1.465      | 5           | 345    | 4                   | 1/2 | 11/16 x 1     | 7.50            |
| ASCAHV-46-5    | 1.466 - 1.545      | 5           | 500    | 4                   | 1/2 | 11/16 x 1     | 8.00            |
| ASCAHV-46-7    | 1.466 - 1.545      | 7           | 500    | 4                   | 1/2 | 13/16 x 1-1/4 | 8.50            |
| ASCAHV-48-5    | 1.602 - 1.630      | 5           | 500    | 4                   | 1/2 | 11/16 x 1     | 8.25            |
| ASCAHV-48-7    | 1.602 - 1.630      | 7           | 500    | 4                   | 1/2 | 13/16 x 1-1/4 | 8.75            |
| ASCAHV-51-5    | 1.729 - 1.823      | 5           | 500    | 4-3/8               | 5/8 | 11/16 x 1     | 8.50            |
| ASCAHV-51-7    | 1.729 - 1.823      | 7           | 500    | 4-3/8               | 5/8 | 13/16 x 1-1/4 | 9.00            |
| ASCAHV-54-5    | 1.912 - 1.996      | 5           | 500    | 4-3/8               | 5/8 | 11/16 x 1     | 9.50            |
| ASCAHV-54-7    | 1.912 - 1.996      | 7           | 500    | 4-3/8               | 5/8 | 13/16 x 1-1/4 | 9.50            |
| ASCAHV-56-5    | 2.158              | 5           | 500    | 4-3/8               | 5/8 | 11/16 x 1     | 9.00            |
| ASCAHV-56-7    | 2.158              | 7           | 500    | 4-3/8               | 5/8 | 13/16 x 1-1/4 | 9.75            |