

ALUMINUM MISCELLANEOUS

TYPE DP-AL

Drive On - Internal
End Plug

Casting: 356-F Aluminum

Internal aluminum end plug for reducing electrostatic loss and enclosing NPS SCH 40 or SCH 80 pipe ends.

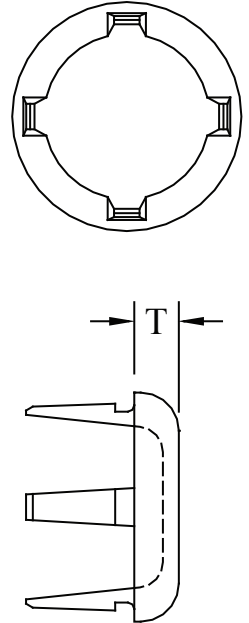
Plug is designed for drive-in fit with tapered internal fingers.

Consult manufacturer for further details or unlisted applications.

Add (H) to conductor code for SCH 80 pipe.

Example: DP-39H-AL

CATALOG NUMBER		CONDUCTOR SIZE (NPS)	THICKNESS (INCHES) T	WEIGHT (POUNDS)
NPS SCH 40	NPS SCH 80			
DP-39-AL	DP-39H-AL	1	3/8	0.20
DP-49-AL	DP-49H-AL	1-1/4	3/8	0.30
DP-53-AL	DP-53H-AL	1-1/2	7/16	0.20
DP-58-AL	DP-58H-AL	2	1/2	0.30
DP-60-AL	DP-60H-AL	2-1/2	5/8	0.50
DP-62-AL	DP-62H-AL	3	13/16	0.70
DP-63-AL	DP-63H-AL	3-1/2	13/16	0.80
DP-64-AL	DP-64H-AL	4	7/8	1.10
DP-67-AL	DP-67H-AL	5	1-1/4	2.15
DP-69-AL	DP-69H-AL	6	1-1/2	2.50



TYPE DPS-AL

Drive On - Internal
End Plug

Casting: 356-F Aluminum

Internal aluminum end plug for reducing electrostatic loss and enclosing NPS SCH 40 or SCH 80 pipe ends.

Compared to the DP- series, the exposed portion of the DPS- series is reduced for use with expansion bus supports and bolted terminals.

The end cap is designed for a drive-in fit with tapered internal fingers.

Consult manufacturer for further details or unlisted applications.

Add (H) to conductor code for SCH 80 pipe. Example: DPS-62H-AL

CATALOG NUMBER		CONDUCTOR SIZE (NPS)	THICKNESS (INCHES) T	WEIGHT (POUNDS)
NPS SCH 40	NPS SCH 80			
DPS-39-AL	DPS-39H-AL	1	1/4	0.25
DPS-49-AL	DPS-49H-AL	1-1/4	1/4	0.25
DPS-53-AL	DPS-53H-AL	1-1/2	3/8	0.25
DPS-58-AL	DPS-58H-AL	2	3/8	0.30
DPS-60-AL	DPS-60H-AL	2-1/2	3/8	0.50
DPS-62-AL	DPS-62H-AL	3	3/8	0.50
DPS-63-AL	DPS-63H-AL	3-1/2	3/8	0.60
DPS-64-AL	DPS-64H-AL	4	3/8	0.70
DPS-67-AL	DPS-67H-AL	5	3/8	1.00
DPS-69-AL	DPS-69H-AL	6	3/8	1.40

