

# ALUMINUM BUS SUPPORTS

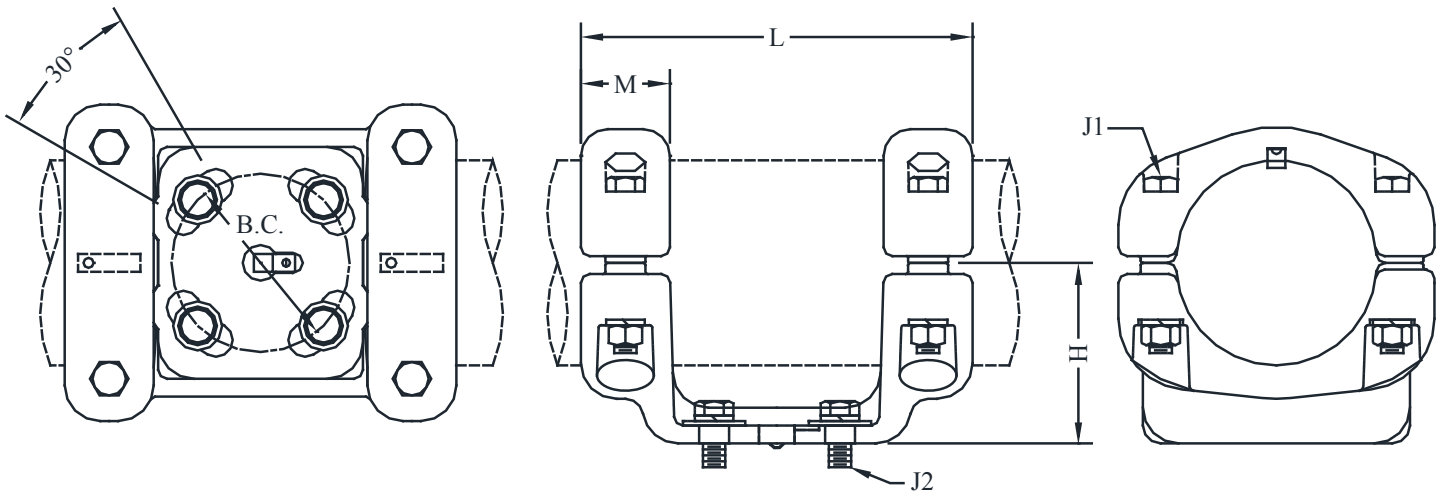
## TYPE ASTIHV-R

Horizontal Bolted Rotational Support  
Pipe to Insulator

Castings: 356-T6 Aluminum  
Clamping Hardware: Aluminum Alloy  
Mounting Hardware: Galvanized Steel

Type ASTIHV-R is designed for corona-free service, within the voltage limitations of the bus, through 500 KV. The  $\pm 15^\circ$  rotational feature greatly reduces torsional forces during fault conditions. Slip or rigid fit is provided by rotating the cap members. Each cap member is provided with a static spring.

Other insulator mounting arrangements are available.  
Consult the factory for more information.



CATALOG NUMBER	PIPE SIZE (NPS)	B.C.	DIMENSIONS-INCHES					WEIGHT (POUNDS)
			H	L	M	J1	J2	
ASTIHV-R-64-5	4	5	4-1/2	11	2-1/2	5/8	5/8	14.90
ASTIHV-R-64-7		7	4-1/2	14	2-1/2	5/8	3/4	19.10
ASTIHV-R-67-5	5	5	5	11	2-1/2	5/8	5/8	15.65
ASTIHV-R-67-7		7	5	13	2-1/2	5/8	3/4	23.40
ASTIHV-R-69-5	6	5	5-1/2	11	2-1/2	5/8	5/8	19.80
ASTIHV-R-69-7		7	5-1/2	14	2-1/2	5/8	3/4	26.30