

EHV TEE CONNECTORS

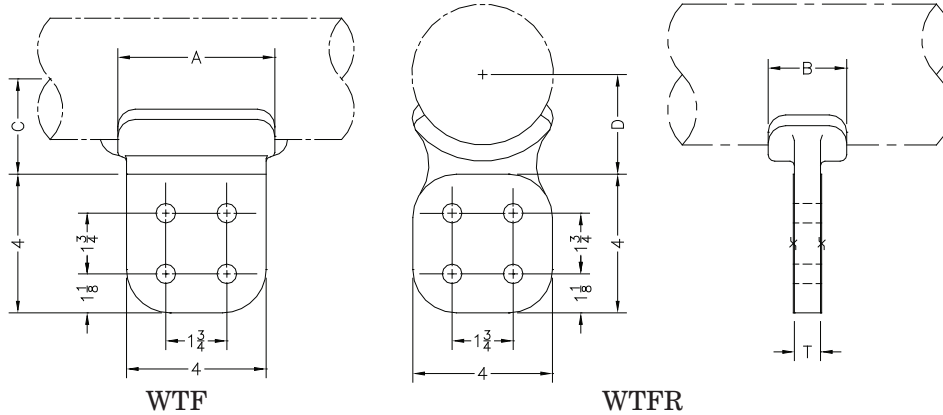
ALUMINUM • 345 - 500 KV

TYPE WTF TYPE WTFR

Weld - Pipe To Flat

Type WTF and WTFR are designed for corona-free service at 345 KV or 500 KV when used with EHV tap connectors and hardware shields. Hardware shield No. AA-1094 must be ordered separately as required. NOTE: See hardware shields AA-1094.

Castings: 356-T6 Aluminum



CATALOG NUMBER		PIPE SIZE (NPS)	DIMENSIONS - INCHES				
TYPE WTF	TYPE WTFR		A	B	C	D	T
WTF-60-4B	WTFR-60-4B	2-1/2	4-1/2	1-3/4	2-1/2	2-1/2	3/4
WTF-62-4B	WTFR-62-4B	3	4-1/2	2-1/4	2-3/4	2-5/8	3/4
WTF-63-4B	WTFR-63-4B	3-1/2	4-1/2	2-1/4	3	2-7/8	3/4
WTF-64-4B	WTFR-64-4B	4	4-1/2	2-1/4	3-1/4	3-1/8	3/4
WTF-67-4B	WTFR-67-4B	5	4-1/2	3	3-3/4	3-3/4	1
WTF-69-4B	WTFR-69-4B	6	4-1/2	4	4-1/4	4-3/8	1

TYPE WTF-6269-4B-HV

Weld - Pipe To Flat

Accommodates 3" NPS through 6" NPS pipe. Pad has NEMA drilling as shown above. Pad thickness is 3/4 inch.

Castings: 356-T6 Aluminum

