

COMPRESSION CONNECTORS

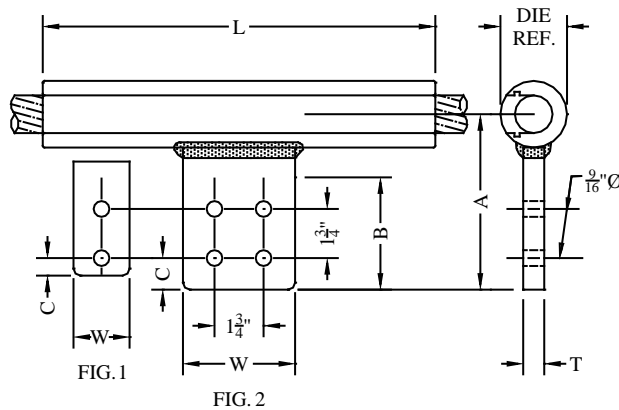
TYPE CTCF

Compression Tee
Copper Cable to Flat

A pure copper compression tee for a continuous cable run to flat NEMA pad. Narrow conductor range assures a solid-mass cross-section after compression. Contact sealant is factory-applied to the barrel and connector is sealed in a clear plastic bag.

For connection to copper pad, connection may be made direct, using contact sealant. If AL/CU transition plate is preferred, add suffix (-TTP) to catalog number. For 2"x3" Pad, substitute -2B for -2A, in catalog number.

For 4"x4" Pad substitute -4B. Contact Factory for sizes not listed.



| CATALOG NUMBER | FIG. NO. | COPPER CONDUCTOR | DIE REF. | DIMENSION - INCHES | | | | | | WEIGHT (POUNDS) |
|----------------|----------|------------------|----------------------|----------------------|--------|-------|-------|-----|-------|-----------------|
| | | | | A | B | C | L | T | W | |
| CTCF-08-2A | 1 | 1/0 STR. | .840 74AH 249 | 4-7/16 | 3-1/4 | 5/8 | 8 | 1/4 | 1-1/2 | 1.55 |
| CTCF-09-2A | 1 | 2/0 STR. | | 4 | 3 | 5/8 | 8 | 1/4 | 1-1/2 | 1.50 |
| CTCF-09-4A | 2 | | | 4 | 3 | 5/8 | 8 | 1/4 | 3 | 1.95 |
| CTCF-10-2A | 1 | 3/0 STR. | | 4 | 3 | 5/8 | 8 | 1/4 | 1-1/2 | 1.40 |
| CTCF-10-4A | 2 | | | 4 | 3 | 5/8 | 9 | 1/4 | 3 | 1.80 |
| CTCF-11-2A | 1 | 4/0 STR. | | 4 | 3 | 5/8 | 8 | 1/4 | 1-1/2 | 1.30 |
| CTCF-11-4A | 2 | | | 4-1/2 | 3-1/8 | 5/8 | 9 | 1/4 | 3 | 1.85 |
| CTCF-12-2A | 1 | 250 MCM | | 4 | 3 | 5/8 | 8-1/2 | 1/4 | 1-1/2 | 1.20 |
| CTCF-12-4A | 2 | | | 4 | 3 | 5/8 | 9 | 1/4 | 3 | 2.25 |
| CTCF-14-2A | 1 | 300 MCM | | 1.125 76AH 316 | 4-7/16 | 3-1/8 | 5/8 | 9 | 1/4 | 1-1/2 |
| CTCF-14-4A | 2 | | 4 | | 3 | 5/8 | 9 | 1/4 | 3 | 2.10 |
| CTCF-16-2A | 1 | 350 MCM | 4-3/16 | | 3-1/8 | 5/8 | 9 | 1/4 | 1-1/2 | 2.10 |
| CTCF-16-4A | 2 | | 4-1/2 | | 3 | 5/8 | 10 | 1/4 | 3 | 2.80 |
| CTCF-17-2A | 1 | 400 MCM | 4-1/2 | | 3-1/8 | 5/8 | 9 | 3/8 | 1-1/2 | 2.50 |
| CTCF-17-4A | 2 | | 4-1/2 | | 3-1/8 | 5/8 | 10 | 3/8 | 3 | 4.15 |
| CTCF-19-2A | 1 | 450 MCM | 4-1/2 | | 3-1/8 | 5/8 | 9 | 3/8 | 1-1/2 | 2.70 |
| CTCF-19-4A | 2 | | 4-1/2 | | 3-1/8 | 5/8 | 10 | 3/8 | 3 | 2.70 |
| CTCF-20-2B | 1 | 500 MCM | 3-3/4 | | 3-1/8 | 5/8 | 10 | 3/8 | 2 | 3.60 |
| CTCF-20-4A | 2 | | 4-1/2 | | 3-1/8 | 5/8 | 10 | 3/8 | 3 | 3.80 |
| CTCF-20-4B | 2 | | 5-1/2 | 4-1/4 | 1-1/8 | 11 | 3/8 | 4 | 5.00 | |
| CTCF-22-2B | 1 | 600 MCM | 1.312 20AH 317 | 5 | 3-1/8 | 5/8 | 10 | 3/8 | 2 | 3.90 |
| CTCF-22-4A | 2 | | | 4-3/4 | 3-1/4 | 5/8 | 11 | 3/8 | 3 | 3.40 |
| CTCF-22-4B | 2 | | | 5 | 4-1/4 | 1-1/8 | 11 | 3/8 | 4 | 4.10 |

COMPRESSION CONNECTORS

TYPE CTCF CONTINUED

A pure copper compression tee for a continuous cable run to flat NEMA pad. Narrow conductor range assures a solid-mass cross-section after compression.

Contact sealant is factory-applied to the barrel and connector is sealed in a clear plastic bag. For connection to copper pad, connection may be made direct, using contact sealant. If AL/CU transition plate is preferred, add suffix (-TTP) to catalog number.

For 2" x 3" pad, substitute 2B in catalog number.

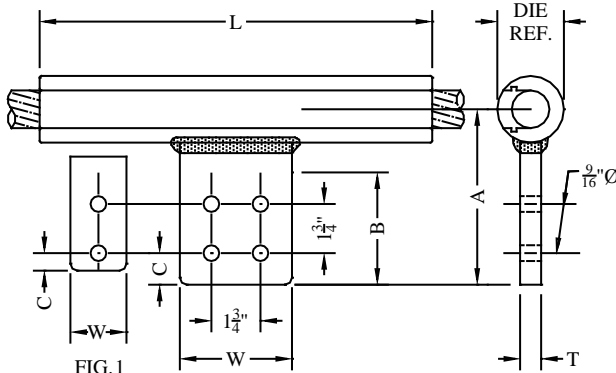


FIG. 2

| CATALOG NUMBER | FIG. NO. | COPPER CONDUCTOR | DIE REF. | DIMENSION - INCHES | | | | | | WEIGHT (POUNDS) |
|----------------|----------|------------------|---------------|--------------------|-------|-------|----|-----|---|-----------------|
| | | | | A | B | C | L | T | W | |
| CTCF-23-4A | 2 | 650 MCM | 1.312 20AH | 5 | 3-1/8 | 5/8 | 11 | 3/8 | 3 | 3.70 |
| CTCF-23-4B | 2 | | | 5 | 4-1/4 | 1-1/8 | 11 | 3/8 | 4 | 3.70 |
| CTCF-25-4A | 2 | 700 MCM | 317 | 5-1/4 | 3-1/8 | 5/8 | 11 | 3/8 | 3 | 3.90 |
| CTCF-25-4B | 2 | | | 5-1/4 | 4-1/4 | 1-1/8 | 12 | 3/8 | 4 | 3.90 |
| CTCF-27-4A | 2 | 750 MCM | 1.500 24AH | 4-3/4 | 3-1/4 | 5/8 | 11 | 3/8 | 3 | 4.80 |
| CTCF-27-4B | 2 | | | 5-1/2 | 4-1/4 | 1-1/8 | 12 | 3/8 | 4 | 5.50 |
| CTCF-28-4A | 2 | 800 MCM | 261 | 5-1/2 | 3-1/8 | 5/8 | 12 | 3/8 | 3 | 5.10 |
| CTCF-28-4B | 2 | | | 5-1/2 | 4-1/4 | 1-1/8 | 12 | 3/8 | 4 | 5.50 |
| CTCF-30-4A | 2 | 850 MCM | | 5-1/2 | 3-1/8 | 5/8 | 12 | 3/8 | 3 | 5.50 |
| CTCF-30-4B | 2 | | | 5-1/2 | 4-1/4 | 1-1/8 | 13 | 3/8 | 4 | 5.50 |
| CTCF-32-4A | 2 | 900 MCM | | 4-3/4 | 3-1/4 | 5/8 | 11 | 3/8 | 3 | 5.50 |
| CTCF-32-4B | 2 | | | 5-1/2 | 4-1/4 | 1-1/8 | 13 | 3/8 | 4 | 5.70 |
| CTCF-33-4A | 2 | 950 MCM | 1.843 30AH | 5-1/2 | 3-1/8 | 5/8 | 13 | 1/2 | 3 | 5.70 |
| CTCF-33-4B | 2 | | | 5-1/2 | 4-1/4 | 1-1/8 | 14 | 3/8 | 4 | 5.70 |
| CTCF-34-4A | 2 | 1000 MCM | 292 | 5 | 3-1/8 | 5/8 | 12 | 1/2 | 3 | 5.00 |
| CTCF-34-4B | 2 | | | 6 | 4-1/8 | 1-1/8 | 13 | 3/8 | 4 | 5.50 |
| CTCF-38-4A | 2 | 1250 MCM | | 5-1/2 | 3-1/4 | 5/8 | 13 | 1/2 | 3 | 7.00 |
| CTCF-38-4B | 2 | | | 5-1/2 | 4-1/8 | 1-1/8 | 14 | 3/8 | 4 | 7.50 |
| CTCF-42-4A | 2 | 1500 MCM | 2.125 34AH | 7-1/4 | 3-1/8 | 5/8 | 13 | 5/8 | 3 | 12.40 |
| CTCF-42-4B | 2 | | | 6-1/16 | 4-1/4 | 1-1/8 | 13 | 3/4 | 4 | 13.20 |
| CTCF-45-4A | 2 | 1750 MCM | 575 | 7-1/4 | 3-1/8 | 5/8 | 13 | 1/2 | 3 | 15.10 |
| CTCF-45-4B | 2 | | | 7-1/4 | 4-1/8 | 1-1/8 | 14 | 5/8 | 4 | 15.50 |
| CTCF-48-4A | 2 | 2000 MCM | 3.75 38AH | 7-1/4 | 3-1/8 | 5/8 | 13 | 3/4 | 3 | 17.10 |
| CTCF-48-4B | 2 | | | 7-1/4 | 4-1/8 | 1-1/8 | 14 | 3/4 | 4 | 18.00 |