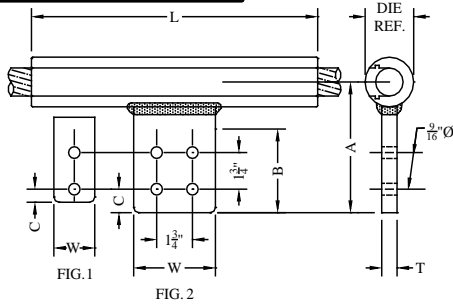


# COMPRESSION CONNECTORS

## TYPE ATCF

Hex Die  
Compression Tee  
Aluminum Cable to Flat

Pure aluminum compression tee for aluminum cable to flat NEMA pad. Narrow conductor range assures a solid-mass cross-section after compression. Tees are for use with hex dies only and should not be used with circular dies. Contact sealant is factory applied to the barrel and the connector is sealed in a clear plastic bag. For connecting to a copper pad, connection may be made direct, using contact sealant. If an AL/CU transition plate is preferred, add suffix (-TTP) to the catalog number.

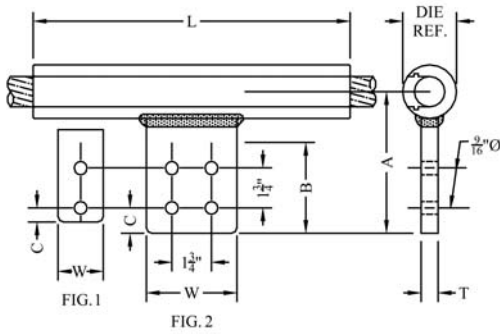


Continued on next page

CATALOG NUMBER	FIG. NO.	CONDUCTOR SIZE (MCM)		DIE REF	DIMENSION-INCHES						WEIGHT (POUNDS)
		AAC	ACSR		A	B	C	L	T	W	
ATCF-528-2B	1	4/0 (7, 19)	-----	1.125 76AH 316	4-5/8	3	5/8	9	3/8	2	0.95
ATCF-528-4A	2		4-5/8		3	5/8	10	3/8	3	1.15	
ATCF-563-2B	1	-----	4/0 (6/1)		4-5/8	3	5/8	9	3/8	2	0.95
ATCF-563-4A	2		4-5/8		3	5/8	10	3/8	3	1.15	
ATCF-575-2B	1	250 (19, 37)	-----		4-5/8	3	5/8	9	3/8	2	0.90
ATCF-575-4A	2		4-5/8		3	5/8	10	3/8	3	1.10	
ATCF-593-2B	1	266 (7, 19)	-----		4-5/8	3	5/8	9	3/8	2	0.90
ATCF-593-4A	2		4-5/8		3	5/8	9	3/8	3	1.00	
ATCF-609-2B	1	-----	266 (18/1)		4-9/16	3-1/4	5/8	9	3/8	2	0.90
ATCF-609-4A	2		4-9/16		3-1/4	5/8	10	3/8	3	1.10	
ATCF-633-2B	1	300 (19, 37, 61)	266 (6/7)		4-9/16	3-1/4	5/8	9	3/8	2	0.85
ATCF-633-4A	2		4-9/16		3-1/4	5/8	10	3/8	3	1.00	
ATCF-646-2B	1	-----	266 (26/7)		4-5/8	3	5/8	9	3/8	2	0.85
ATCF-646-4A	2		300 (18/1)		4-9/16	3-1/4	5/8	10-1/2	3/8	3	1.10
ATCF-677-2B	1	336 (19, 37)	336 (36/1)		4-9/16	3-1/4	5/8	10-1/2	3/8	2	0.90
ATCF-677-4A	2		4-5/8		3	5/8	10-1/2	3/8	3	1.05	
ATCF-684-2B	1	350 (19, 37)	300 (26/7)		4-9/16	3-1/4	5/8	10-5/8	3/8	2	1.30
ATCF-684-4A	2		336 (18/1)		4-9/16	3-1/4	5/8	10-5/8	3/8	3	1.40
ATCF-724-2B	1	397 (19)	336 (26/7)		4-11/16	3-1/4	5/8	10-3/4	1/2	2	1.25
ATCF-724-4A	2		4-1/2		3-1/4	5/8	10-3/4	1/2	3	1.35	
ATCF-736-2B	1	400 (37)	397 (36/1)	4-11/16	3-1/4	5/8	10-3/4	1/2	2	1.35	
ATCF-736-4A	2		4-7/8	3-1/4	5/8	11-1/2	5/8	3	1.70		
ATCF-743-2B	1	-----	336 (30/7)	4-11/16	3-1/4	5/8	10-3/4	1/2	2	1.30	
ATCF-743-4A	2		397 (18/1)	4-9/16	3-1/4	5/8	10-5/8	3/8	3	1.35	
ATCF-783-2B	1	450 (37)	397 (24/7)(26/7)	4-7/8	3-1/4	5/8	10	1/2	2	1.60	
ATCF-783-4A	2		4-5/8	3	5/8	11	3/8	3	2.15		
ATCF-795-2B	1	477 (19, 37)	-----	4-11/16	3-1/4	5/8	10-3/4	1/2	2	1.25	
ATCF-795-4A	2		4-9/16	3-1/4	5/8	11	3/8	3	1.30		
ATCF-814-2B	1	500 (19, 37)	397 (30/7)	4-11/16	3-1/4	5/8	10-3/4	1/2	2	1.20	
ATCF-814-4A	2		477 (18/1)(36/1)	4-11/16	3-1/4	5/8	11-3/4	3/8	3	1.25	
ATCF-846-2B	1	-----	477 (24/7)	4-13/16	3-1/4	5/8	10-5/8	5/8	2	1.25	
ATCF-846-4A	2		4-7/8	3-1/4	5/8	12	1/2	3	1.45		
ATCF-858-2B	1	550 (61) 556 (19, 37)	477 (26/7)	4-11/16	3-1/4	5/8	10-3/4	1/2	2	1.15	
ATCF-858-4A	2		4-3/4	3-1/4	5/8	10-3/4	1/2	3	1.35		

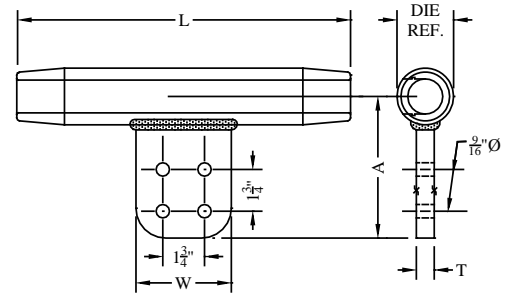
# COMPRESSION CONNECTORS

## TYPE ATCF CONTINUED



Type ATCF-EHV compression tee to flat. Used for EHV applications where streamlined, tapered connector are needed for corona free service. Add "EHV" to standard catalog number. EX: ATCF-1031-4B-EHV

## TYPE ATCF-EHV



CATALOG NUMBER	FIG. NO.	CONDUCTOR SIZE (MCM)		DIE REF	DIMENSION-INCHES						WEIGHT (POUNDS)
		AAC	ACSR		A	B	C	L	T	W	
ATCF-883-2B	1	-----	556 (18/1)(36/1)	1.500 24AH 261	4-7/8	3	5/8	12	5/8	2	1.80
ATCF-883-4A	2	-----	477 (30/7)		4-7/8	3-1/4	5/8	12	5/8	3	2.00
ATCF-893-2B	1	600 (37)(61)	-----		4-7/8	3-1/4	5/8	11	5/8	2	1.80
ATCF-893-4A	2		4-7/8		3-1/4	5/8	12	5/8	3	2.00	
ATCF-918-2B	1	636 (37)(61)	556 (24/7)		4-7/8	3-1/4	5/8	11-1/2	1/2	2	1.60
ATCF-918-4A	2		605 (36/1)		4-7/8	3-1/4	5/8	12	5/8	3	1.95
ATCF-940-2B	1	650 (37)(61)	556 (26/7)		4-7/8	3-1/4	5/8	11-1/2	1/2	2	1.55
ATCF-940-4A	2		636 (18/1)(36/1)		4-7/8	3-1/4	5/8	11-1/2	1/2	3	1.75
ATCF-966-2B	1	700 (37)(61)	556 (30/7)		4-1/2	3-1/4	5/8	10	1/2	2	1.35
ATCF-966-4A	2		605 (24/7)(26/7) 666 (36/1)		4-7/8	3-1/4	5/8	12	1/2	3	1.85
ATCF-987-2B	1	715 (37)(61)	636 (24/7)		4-7/8	3-1/4	5/8	11	1/2	2	1.55
ATCF-987-4A	2		715 (36/1)		4-7/8	3-1/4	5/8	12	1/2	3	1.70
ATCF-1000-2B	1	750 (37)(61)	605 (30/19)		4-7/8	3-1/4	5/8	11-1/2	1/2	2	1.45
ATCF-1000-4A	2		636 (26/7) 666 (24/7)		4-7/8	3-1/4	5/8	12	1/2	3	1.80
ATCF-1031-2B	1	795 (37)(61) 800 (61)	-----		4-7/8	3-1/4	5/8	12	5/8	2	2.55
ATCF-1031-4A	2		4-7/8		3-1/4	5/8	12	5/8	3	2.80	
ATCF-1040-2B	1	-----	715 (54/7)		4-7/8	3-1/4	5/8	12	5/8	2	2.55
ATCF-1040-4A	2		795 (36/1)		4-7/8	3-1/4	5/8	12	5/8	3	2.75
ATCF-1063-4A	2	-----	715 (26/7)	4-7/8	3-1/4	5/8	12	5/8	3	2.75	
ATCF-1063-4B	2		795 (45/7)	6	4-1/4	1-1/8	14	5/8	4	3.55	
ATCF-1094-4A	2	874 (37)(61) 900 (37)(61) (91)	715 (30/19)	5	3-1/4	5/8	13	5/8	3	2.85	
ATCF-1094-4B	2		795 (24/7)(54/7)	5-7/8	4-1/4	1-1/8	14	5/8	4	3.50	
ATCF-1108-4A	2	-----	795 (26/7)	5	3-1/4	5/8	14	5/8	3	2.95	
ATCF-1108-4B	2		5-7/8	4-1/4	1-1/8	14	5/8	4	3.45		
ATCF-1126-4A	2	954 (37)(61)	795 (30/19)	5	3-1/4	5/8	14	5/8	3	2.90	
ATCF-1126-4B	2		6	4-1/4	1-1/8	14	5/8	4	3.40		
ATCF-1152-4A	2	1000 (37) (61)	874 (54/7)	4-7/8	3-1/4	5/8	14	5/8	3	2.85	
ATCF-1152-4B	2		900 (45/7) 954 (36/1)	6	4-1/4	1-1/8	14	5/8	4	3.30	
ATCF-1172-4A	2	1033 (37)(61)	900 (54/7)	5-1/16	3-1/4	5/8	14	3/4	3	3.55	
ATCF-1172-4B	2		954 (45/7)	6	4-1/4	1-1/8	14	5/8	4	4.50	
ATCF-1186-4A	2	-----	1033 (36/1)	5-1/16	3-1/4	5/8	14	5/8	3	3.90	
ATCF-1186-4B	2		5-3/4	4	1-1/8	14	5/8	4	4.35		

# COMPRESSION CONNECTORS

## TYPE ATCF CONTINUED

CATALOG NUMBER	FIG. NO.	CONDUCTOR RANGE		DIE REF.	DIMENSIONS - INCHES						WEIGHT (POUNDS)
		AAC	ACSR		A	B	C	L	T	W	
ATCF-1196-4A	2	-----	954 (54/7)	2.125 34AH 575	5-1/16	3-1/4	5/8	14	5/8	3	3.90
ATCF-1196-4B	2				5-3/4	4	1-1/8	14	5/8	4	4.35
ATCF-1216-4A	2	1113 (61)	1033 (45/7)		5-1/16	3-1/4	5/8	14	5/8	3	3.90
ATCF-1216-4B	2	1100 (91)			6-1/8	4-1/4	1-1/8	14	3/4	4	4.60
ATCF-1246-4A	2	-----	1033 (54/7)		5-1/16	3-1/4	5/8	14	5/8	3	3.80
ATCF-1246-4B	2				6-1/8	4-1/4	1-1/8	14	3/4	4	4.50
ATCF-1264-4A	2	1192 (61)	1113 (45/7)		5-1/16	3-1/4	5/8	14	5/8	3	3.75
ATCF-1264-4B	2	1200 (91)			6-1/8	4-1/4	1-1/8	14	3/4	4	4.45
ATCF-1293-4A	2	1250 (91)	1113 (54/19)		5-1/4	3-1/4	5/8	14	3/4	3	5.00
ATCF-1293-4B	2				6-3/16	4-1/4	1-1/8	14	3/4	4	5.60
ATCF-1302-4A	2	1272 (61)	1192 (45/7)		5-1/4	3-1/4	5/8	14	3/4	3	4.95
ATCF-1302-4B	2				6-1/4	4-1/4	1-1/8	14	3/4	4	5.55
ATCF-1345-4A	2	1351 (61)	1192 (54/19) 1272 (45/7)	5-1/4	3-1/4	5/8	14	3/4	3	4.85	
ATCF-1345-4B	2			6-1/4	4-1/4	1-1/8	14	3/4	4	5.45	
ATCF-1385-4A	2	1431 (61)	1272 (54/19) 1351 (45/7)	5-1/4	3-1/4	5/8	14	3/4	3	4.75	
ATCF-1385-4B	2			6-1/4	4-1/4	1-1/8	16	3/4	4	5.85	
ATCF-1417-4A	2	1500 (91)(127)	-----	5-1/4	3-1/4	5/8	14	5/8	3	5.50	
ATCF-1417-4B	2	1510 (61)		6-1/4	4-1/4	1-1/8	15	3/4	4	5.50	
ATCF-1427-4A	2	-----	1351 (54/19) 1431 (45/7)	5-1/4	3-1/4	5/8	14	3/4	3	4.60	
ATCF-1427-4B	2			6-1/4	4-1/4	1-1/8	14	3/4	4	5.15	
ATCF-1466-4A	2	1590 (61)(91)	1431 (54/19) 1510 (45/7)	5-1/4	3-1/4	5/8	14	3/4	3	4.50	
ATCF-1466-4B	2	1600 (127)(169)		6-1/4	4-1/4	1-1/8	15	3/4	4	5.35	
ATCF-1506-4A	2	1700 (127)(169)	1510 (54/19) 1590 (45/7)	5-1/4	3-1/4	5/8	14	3/4	3	4.40	
ATCF-1506-4B	2			6-1/4	4-1/4	1-1/8	15	3/4	4	5.20	
ATCF-1526-4A	2	1750 (127)	-----	5-1/4	3-1/4	5/8	14	3/4	3	4.20	
ATCF-1526-4B	2			6-1/4	4-1/4	1-1/8	15	3/4	4	5.10	
ATCF-1548-4B	2	1800 (127)	1590 (54/19)	6-1/4	4-1/4	1-1/8	15	3/4	4	5.00	
ATCF-1632-4B	2	2000 (91)(127)	-----	6-1/4	4-1/4	1-1/8	15	3/4	4	4.70	
ATCF-1737-4B	2	2250 (61)(91)	2167 (72/7)	6-1/4	4-1/4	1-1/8	15	3/4	4	7.70	
ATCF-1762-4B	2	-----	2156 (84/19)	6-1/4	4-1/4	1-1/8	15	3/4	4	7.60	
ATCF-1802-4B	2	-----	2306/2312 (76/19)	6-1/2	4-1/4	1-1/8	18	3/4	4	8.65	
ATCF-1824-4B	2	2500 (91)(127)	-----	6-1/2	4-1/4	1-1/8	15	3/4	4	8.50	
ATCF-1880-4B	2	-----	2515 (76/19)	6-1/2	4-1/4	1-1/8	18	3/4	4	8.25	
ATCF-1998-4B	2	3000 (127)(169)	-----	6-1/2	4-1/4	1-1/8	18	3/4	4	7.65	
ATCF-2158-4B	2	3500 (127)(169)	-----	6-1/2	4-1/4	1-1/8	18	3/4	4	6.55	
ATCF-2250-4B	2	3640	-----	6-1/4	4-1/4	1-1/8	18	3/4	4	6.45	
ATCF-2283-4B	2	4000	-----	CONTACT FACTORY FOR DETAILS							
ATCF-2400-4B	2	4327	-----								