

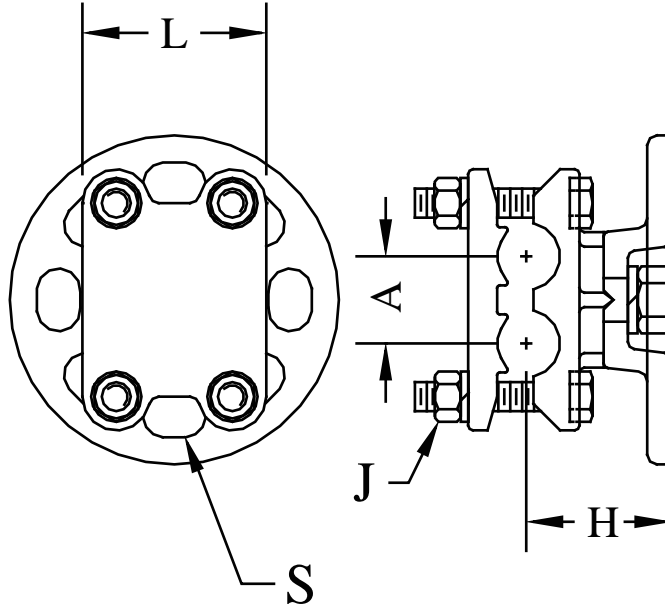
BRONZE BUS SUPPORTS

TYPE SCRI2

Horizontal Bolted
Two Cables to Insulator

Bronze alloy bus support for two copper cables.
Hardware supplied for CAP mounting.
For PIN mounting, add suffix (P) to catalog number
Example: SCRI2-34-3P

Castings: Electrical Bronze
Clamping Hardware: Silicon Bronze
Mounting Hardware: Galvanized Steel



CATALOG NUMBER	CONDUCTOR RANGE	B.C.	DIMENSIONS-INCHES					WEIGHT (POUNDS)
			H	L	A	T	S	
SCRI2-20-3	4/0-500 MCM	3	2	2-3/8	1-1/8	3/8	9/16 x 13/16	6.00
SCRI2-20-5		5	2	2-3/8	1-1/8	3/8	11/16 x 1-1/16	7.25
SCRI2-34-3	4/0-1000 MCM	3	2-5/8	3-1/8	1-5/8	1/2	9/16 x 1-1/16	7.00
SCRI2-34-5		5	2-5/8	3-1/8	1-5/8	1/2	11/16 x 1-1/16	8.25
SCRI2-48-3	1500-2000 MCM	3	2-1/2	3-1/4	1-7/8	1/2	9/16 x 13/16	10.50
SCRI2-48-5		5	2-1/2	3-1/4	1-7/8	1/2	11/16 x 1-1/16	11.00