

COMPRESSION CONNECTORS

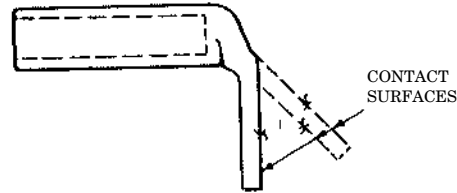
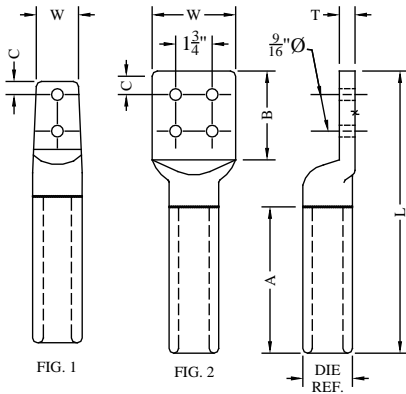
TYPE AL

(Hex Die)
Compression Terminal
Aluminum Cable to Flat

Pure aluminum compression terminal for aluminum cable to flat NEMA pad. Terminals are for use with hex dies only and should not be used with circular dies. Contact sealant is factory applied to the barrel and the connector is sealed in a clear plastic bag.

For connecting to copper pad, connection may be made direct, using contact sealant. If AL/CU transition plate is preferred, add suffix (-TTP) to catalog number.

Angle connector may be obtained by adding desired angle to catalog number.
Example: (AL-677-2B-15)

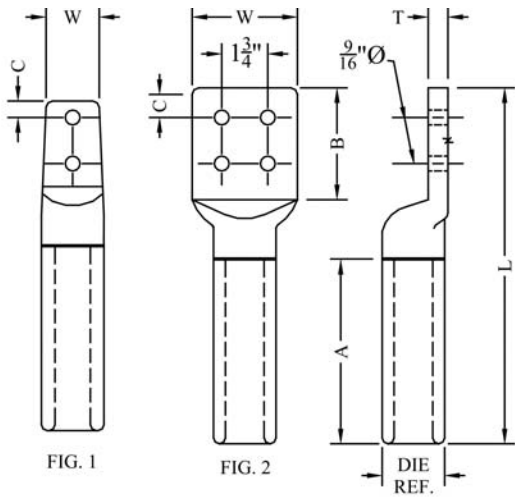


CATALOG NUMBER	FIG. NO.	CONDUCTOR SIZE (MCM)		DIE REF	DIMENSION-INCHES						WEIGHT (POUNDS)
		AAC	ACSR		A	B	C	L	T	W	
AL-292-2A	1	#2 (7)	-----	.640	2	3-1/4	5/8	6-1/16	1/4	1-3/16	0.15
AL-316-2A	1	-----	#2 (6/1)		2	3-1/4	5/8	6-1/16	1/4	1-3/16	0.15
AL-332-2A	1	#1 (7)(19)	#2 (7/1)		2	3-1/4	5/8	6-1/16	1/4	1-3/16	0.15
AL-355-2B	1	-----	#1 (6/1)	.840 74AH 249	3	3-1/4	5/8	7-1/2	5/16	2	0.25
AL-373-2B	1	1/0 (7)(19)	-----		3	3-1/4	5/8	7-1/2	5/16	2	0.35
AL-398-2B	1	-----	1/0 (6/1)		3	3-1/4	5/8	7-1/2	5/16	2	0.35
AL-419-2B	1	2/0 (7)(19)	-----		3	3-1/4	5/8	7-1/2	5/16	2	0.35
AL-447-2B	1	-----	2/0 (6/1)		3	3-1/4	5/8	7-1/2	5/16	2	0.30
AL-470-2B	1	3/0 (7)(19)	-----		3	3-1/4	5/8	7-1/2	5/16	2	0.35
AL-502-2B	1	-----	3/0 (7)(19)		3	3-1/4	5/8	7-1/2	5/16	2	0.35
AL-528-2B	1	4/0 (7)(19)	-----		3	3-1/4	5/8	7-1/2	5/16	1-1/2	0.30
AL-528-4A	2				3	3-1/4	5/8	7-1/2	5/16	3	0.45
AL-563-2B	1	-----	4/0 (6/1)		3	3-1/8	5/8	7-1/4	3/8	2	0.30
AL-563-4A	2			3	3-1/4	5/8	7-1/2	5/16	3	0.45	
AL-575-2B	1	250(19)(37)	-----	1.125 76AH 316	3-1/2	3-1/4	5/8	8-1/8	3/8	2	0.60
AL-575-4A	2				3-1/4	3-1/4	5/8	8-1/4	5/16	3	0.65
AL-593-2B	1	266.8(7)(19)	-----		3-1/2	3-1/4	5/8	8-1/8	3/8	2	0.60
AL-593-4A	2				3-1/2	3-1/4	5/8	8-1/8	5/16	3	0.65
AL-609-2B	1	-----	266 (18/1)		3-1/2	3-1/4	5/8	8-1/8	3/8	2	0.60
AL-609-4A	2				3-1/2	3-1/4	5/8	8-1/8	5/16	3	0.65
AL-633-2B	1	300	266 (24/7)		3-1/2	3-1/4	5/8	8-1/8	3/8	2	0.60
AL-633-4A	2				3-1/2	3-1/4	5/8	8-1/8	5/16	3	0.65
AL-646-2B	1	-----	266 (26/7) 300 (18/1)		3-1/2	3-1/4	5/8	8-1/8	3/8	2	0.60
AL-646-4A	2				3-1/2	3-1/4	5/8	8-1/8	5/16	3	0.65
AL-677-2B	1	336 (19)(37)	336 (36/1)		3-1/2	3-1/4	5/8	8-1/4	3/8	2	0.55
AL-677-4A	2				4	3-1/4	5/8	8-5/8	5/16	3	0.65

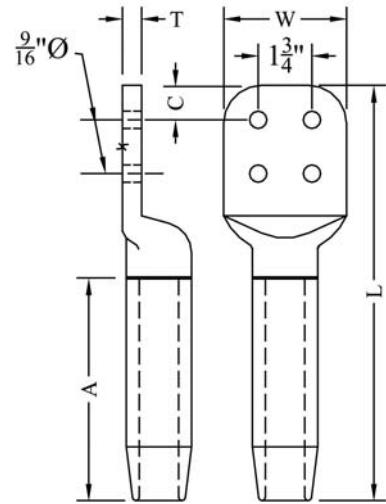
COMPRESSION CONNECTORS

TYPE AL CONTINUED

TYPE AL-EHV



Type AL-EHV terminal used for high voltage applications where streamlined, tapered connectors are needed for corona free service. Add "EHV" to standard catalog number. Example: AL-1031-4B-EHV



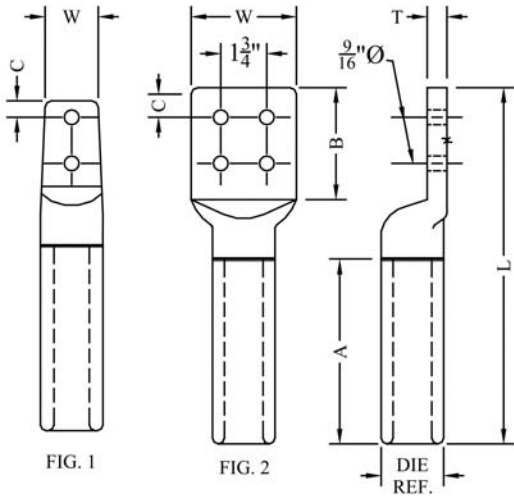
CATALOG NUMBER	FIG. NO.	CONDUCTOR SIZE (MCM)		DIE REF	DIMENSION-INCHES						WEIGHT (POUNDS)
		AAC	ACSR		A	B	C	L	T	W	
AL-684-2B	1	350 (37)	336 (18/1)	1.312 20AH 317	4	3-1/2	5/8	9	1/2	2	0.90
AL-684-4A	2				4	3-1/4	5/8	9	3/8	3	0.95
AL-724-2B	1	397.5	336.5 (26/7)		4	3-1/4	5/8	8-3/4	1/2	2	0.85
AL-724-4A	2				4	3-1/4	5/8	9	3/8	3	0.95
AL-724-4B	2				5	4-1/4	1-1/8	10-3/4	5/16	4	1.15
AL-736-2B	1	400	397 (36/1)		4	3-1/4	5/8	8-3/4	1/2	2	0.85
AL-736-4A	2				4	3-1/4	5/8	9	3/8	3	0.90
AL-736-4B	2				5	4-1/4	1-1/8	10-3/4	5/16	4	1.00
AL-743-2B	1	-----	336.4 (30/7) 397.5 (18/1)		4	3-1/4	5/8	9	1/2	2	0.90
AL-743-4A	2				5	3-1/4	5/8	9-3/4	3/8	3	1.10
AL-743-4B	2				5	4-1/4	1-1/8	10-3/4	5/16	4	1.15
AL-783-2B	1	450 (37)	397 (24/7) (26/7)		4	3-1/4	5/8	9	1/2	2	0.85
AL-783-4A	2				4	3-1/4	5/8	9	3/8	3	0.90
AL-783-4B	2				5	4-1/4	1-1/8	10-3/4	5/16	4	1.10
AL-795-2B	1	477 (19) (37)	-----		5	3-1/4	5/8	9-3/4	1/2	2	0.90
AL-795-4A	2				5	3-1/4	5/8	10	3/8	3	0.95
AL-795-4B	2				5	4-1/4	1-1/8	11	5/16	4	1.15
AL-814-2B	1	500 (19) (37)	397 (30/7) 477 (18/1) (36/1)		5	3-1/2	5/8	10	1/2	2	0.90
AL-814-4A	2				5	3-1/4	5/8	10	3/8	3	0.95
AL-814-4B	2				5	4-1/4	1-1/8	10-3/4	5/16	4	1.10
AL-846-2B	1	-----	477 (24/7)	4	3-1/4	5/8	8-3/4	1/2	2	0.80	
AL-846-4A	2			5	3-1/4	5/8	9-3/4	3/8	3	1.00	
AL-846-4B	2			5	4-1/4	1-1/8	10-3/4	5/16	4	1.10	
AL-858-2B	1	550 (61)	477 (26/7)	5	3-1/4	5/8	9-3/4	1/2	2	0.85	
AL-858-4A	2	556 (19) (37)		5	3-1/4	5/8	9-3/4	3/8	3	0.90	
AL-858-4B	2			5	10-3/4	1-1/8	10-3/4	5/16	4	1.00	

Continued on next page

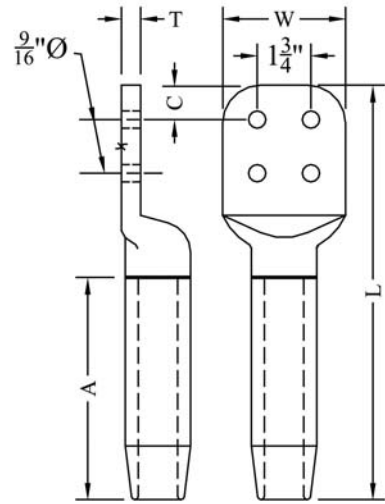
COMPRESSION CONNECTORS

TYPE AL CONTINUED

TYPE AL-EHV



Type AL-EHV terminal used for high voltage applications where streamlined, tapered connectors are needed for corona free service. Add "EHV" to standard catalog number. Example: AL-1031-4B-EHV



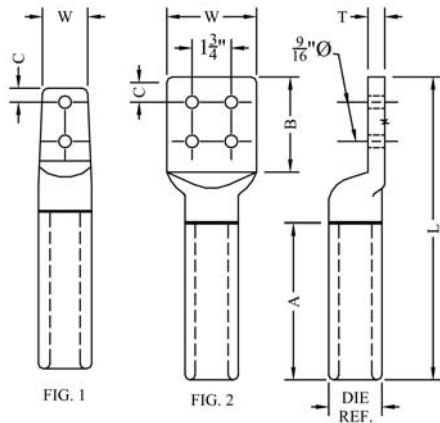
CATALOG NUMBER	FIG. NO.	CONDUCTOR SIZE (MCM)		DIE REF	DIMENSION-INCHES						WEIGHT (POUNDS)
		AAC	ACSR		A	B	C	L	T	W	
AL-883-2B	1			1.500 24AH 261	5	3-1/4	5/8	9-3/4	1/2	2	1.10
AL-883-4A	2	-----	477 (30/7) 556.5 (18/1)		5	3-1/4	5/8	9-3/4	7/16	3	1.20
AL-883-4B	2		(36/1)		5	4-1/4	1-1/8	10-3/4	5/16	4	1.30
AL-918-2B	1				5	3-1/4	5/8	9-3/4	1/2	2	1.10
AL-918-4A	2	636 (37)(61)	556 (24/7) 605 (36/1)		5	3-1/4	5/8	9-3/4	7/16	3	1.15
AL-918-4B	2				5	4-1/4	1-1/8	10-3/4	5/16	4	1.30
AL-940-2B	1				5	3-1/4	5/8	9-3/4	1/2	2	1.50
AL-940-4A	2	650 (37)(61)	556.5 (26/7) 636 (18/1)		5	3-1/4	5/8	9-3/4	7/16	3	1.15
AL-940-4B	2		(36/1)		5	4-1/4	1-1/8	10-3/4	5/16	4	1.25
AL-966-2B	1				5	3-1/4	5/8	9-3/4	1/2	2	1.00
AL-966-4A	2	700 (61)	605 (24/7) (26/7) 666 (36/1)		5	3-1/4	5/8	9-3/4	7/16	3	1.20
AL-966-4B	2		556 (30/7)		5	4-1/4	1-1/8	10-3/4	5/16	4	1.25
AL-987-2B	1				5	3-1/4	5/8	9-3/4	1/2	2	1.00
AL-987-4A	2	715 (37)(61)	636 (24/7) 715 (36/1)		5	3-1/4	5/8	9-3/4	7/16	3	1.10
AL-987-4B	2				5	4-1/4	1-1/8	10-3/4	3/8	4	1.35
AL-1000-2B	1				5	3-1/4	5/8	9-3/4	1/2	2	1.00
AL-1000-4A	2	750 (37)(61) (91)	605 (30/19) 636 (26/7)		5	3-1/4	5/8	9-3/4	7/16	3	1.10
AL-1000-4B	2		666 (24/7)		5	4-1/4	1-1/8	11-1/8	5/16	4	1.30
AL-1031-4A	2	795 (37)(61)	636 (30/19)	1.843 30AH 292	5	3-1/4	5/8	9-3/4	5/8	3	1.95
AL-1031-4B	2				5	4-1/4	1-1/8	11-1/8	1/2	4	2.15
AL-1040-4A	2	-----	715 (54/7)		5	3-1/4	5/8	9-3/4	1/2	3	2.00
AL-1040-4B	2		795 (36/1)		5	4-1/4	1-1/8	11-1/8	1/2	4	2.15

Continued on next page

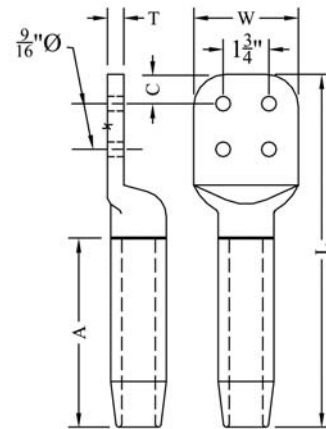
COMPRESSION CONNECTORS

TYPE AL CONTINUED

TYPE AL-EHV



Type AL-EHV terminal used for high voltage applications where streamlined, tapered connectors are needed for corona free service. Add "EHV" to standard catalog number. Example: AL-1031-4B-EHV

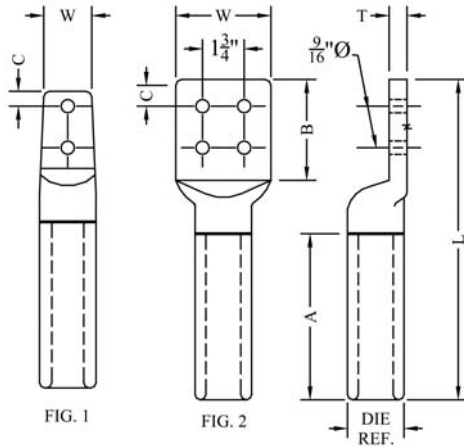


CATALOG NUMBER	FIG. NO.	CONDUCTOR SIZE (MCM)		DIE REF	DIMENSION-INCHES						WEIGHT (POUNDS)	
		AAC	ACSR		A	B	C	L	T	W		
AL-1063-4A	2	-----	715 (26/7)	1.843 30AH 292	6	3-1/4	5/8	11-1/8	1/2	3	1.95	
AL-1063-4B	2		795 (45/7)		6	4-1/4	1-1/8	12-1/8	1/2	4	2.30	
AL-1094-4A	2	874 - 900	715 (30/19)		6	3-1/4	5/8	11-1/8	1/2	3	1.90	
AL-1094-4B	2		795 (24/7,54/7)		6	4-1/4	1-1/8	12-1/8	1/2	4	2.30	
AL-1108-4A	2	927.2	795 (26/7)		6	3-1/4	5/8	11-1/8	1/2	3	1.90	
AL-1108-4B	2				6	4-1/4	1-1/8	12-1/8	1/2	4	2.25	
AL-1126-4A	2	954	-----		6	3-1/4	5/8	11-1/8	1/2	3	1.90	
AL-1126-4B	2				6	4-1/4	1-1/8	12-1/8	1/2	4	2.25	
AL-1152-4A	2	1000 (61)	795 (30/19)		6	3-1/4	5/8	11-1/8	1/2	3	1.85	
AL-1152-4B	2		874 (54/7)		6	4-1/4	1-1/8	12-1/8	1/2	4	2.20	
			900 (45/7)									
			954 (36/1)									
AL-1172-4A	2	1033	900 (54/7)		2.125 34AH 575	7	3-1/4	5/8	12-1/4	3/4	3	3.00
AL-1172-4B	2		954 (45/7)			7	4-1/4	1-1/8	13-1/4	5/8	4	3.35
AL-1186-4A	2	-----	1033 (36/1)	7		3-1/4	5/8	12	3/4	3	2.95	
AL-1186-4B	2			7		4-1/4	1-1/8	13-1/4	5/8	4	3.35	
AL-1196-4A	2	-----	954 (54/7)	7		3-1/4	5/8	12	3/4	3	2.95	
AL-1196-4B	2			7		4-1/4	1-1/8	13-1/4	5/8	4	3.30	
AL-1216-4A	2	1100	1033 (45/7)	7		3-1/4	5/8	12	3/4	3	2.95	
AL-1216-4B	2			1113		7	4-1/4	1-1/8	13-1/4	5/8	4	3.30
AL-1246-4A	2	-----	1033.5 (54/7)	7		3-1/4	5/8	12	3/4	3	2.85	
AL-1246-4B	2			7		4-1/4	1-1/8	13-1/4	5/8	4	3.25	
AL-1264-4A	2	1192 (61)	1113 (45/7)	7		3-1/4	5/8	12	3/4	3	2.85	
AL-1264-4B	2			7		4-1/4	1-1/8	13-1/4	5/8	4	3.20	
AL-1293-4A	2	1250	1113 (54/19)	2.375		7	3-1/4	5/8	12-1/2	3/4	3	3.75
AL-1293-4B	2					7	4-1/4	1-1/8	13-1/2	3/4	4	4.25

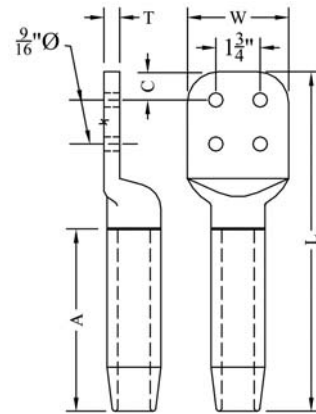
Continued on next page

COMPRESSION CONNECTORS

TYPE AL CONTINUED



TYPE AL-EHV



Type AL-EHV terminal used for high voltage applications where streamlined, tapered connectors are needed for corona free service. Add "EHV" to standard catalog number. Example: AL-1031-4B-EHV

CATALOG NUMBER	FIG. NO.	CONDUCTOR RANGE		DIE REF.	DIMENSIONS - INCHES						WEIGHT (POUNDS)
		AAC	ACSR		A	B	C	L	T	W	
AL-1302-4A	2	1272 (61)	1192 (45/7)	2.375 38AH 478	7	3-1/4	5/8	12-1/2	3/4	3	3.70
AL-1302-4B	2				7	4-1/4	1-1/8	13-1/2	3/4	4	4.25
AL-1345-4A	2	1351 (61)	1192 (54/19) 1272 (45/7)		7	3-1/4	5/8	12-1/2	3/4	3	3.65
AL-1345-4B	2				7	4-1/4	1-1/8	13-1/2	3/4	4	4.20
AL-1385-4A	2	1431 (61)	1272 (54/19) 1351 (45/7)		7	3-1/4	5/8	12-1/2	3/4	3	3.60
AL-1385-4B	2				7	4-1/4	1-1/8	13-1/2	3/4	4	4.10
AL-1417-4A	2	1500 (61) 1510 (91)	-----		7	3-1/4	5/8	12-1/2	3/4	3	3.55
AL-1417-4B	2				7	4-1/4	1-1/8	13-1/2	3/4	4	4.00
AL-1427-4A	2	-----	1351 (54/19) 1431 (45/7)		7	3-1/4	5/8	12-1/2	3/4	3	4.00
AL-1427-4B	2				7	4-1/4	1-1/8	13-1/2	3/4	4	4.00
AL-1466-4A	2	1590(61) (91)	1431 (54/19) 1510 (45/7)		7	3-1/4	5/8	12-1/2	3/4	3	3.45
AL-1466-4B	2				7	4-1/4	1-1/8	13-1/2	3/4	4	4.00
AL-1506-4A	2	1700	1510 (54/19) 1590 (45/7)		7	3-1/4	5/8	12	3/4	3	3.40
AL-1506-4B	2				7	4-1/4	1-1/8	13-1/2	3/4	4	3.95
AL-1526-4B	2	1750 (127)	1590 (48/7)		7	4-1/4	5/8	13-1/2	3/4	4	3.90
AL-1548-4B	2	1750 - 1800	1590 (54/19)		7	4-1/4	1-1/8	13-1/2	3/4	4	3.85
AL-1602-4A	2	-----	1780 (84/19) 2000 (80/7)		7	3-1/4	5/8	13-1/2	3/4	3	3.20
AL-1602-4B	2				7	4-1/4	1-1/8	13-1/2	3/4	4	3.75
AL-1632-4B	2	2000	-----		7	4-1/4	1-1/8	13-1/2	3/4	4	3.70
AL-1737-4B	2	2250	2167 (72/7)		7	4-1/4	1-1/8	15-1/4	1	4	6.70
AL-1762-4B	2	2300	2156 (84/19)	9	4-1/4	1-1/8	15-1/4	1	4	6.60	
AL-1802-4B	2	-----	2306.2 (76/19) 2312 (76/19)	9	4-1/4	1-1/8	15-1/4	1	4	6.50	
AL-1824-4B	2	2500	-----	9	4-1/4	1-1/8	15-1/4	1	4	6.45	
AL-1880-4B	2	-----	2515 (76/19)	9	4-1/4	1-1/8	15-1/4	1	4	6.35	
AL-1998-4B	2	3000	-----	9	4-1/4	1-1/8	15-1/4	1	4	6.00	
AL-2158-4B	2	3500	-----	9	4-1/4	1-1/8	15-1/4	1	4	5.50	
AL-2250-4B	2	3640	-----	9	4-1/4	1-1/8	15-1/4	1	4	5.45	
AL-2283-4B	2	4000	-----	9	4-1/4	1-1/8	15-1/4	1	4	5.10	
AL-2400-4B	2	4327	-----	9	4-1/4	1-1/8	15-1/4	1	4	4.80	