

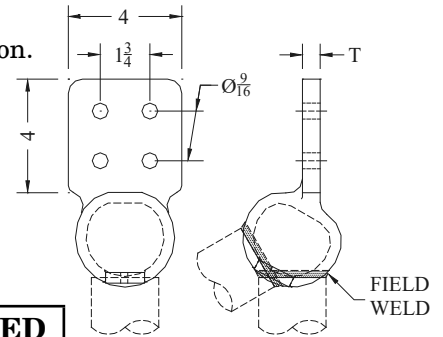
ALUMINUM TERMINALS

TYPE WFTIR

Angle Weldment

Castings: 356-T6 Aluminum
Options: See Page 211

Aluminum welded variable angle terminal. Note that the angles are limited by the conductor size.
Contact factory for further information.



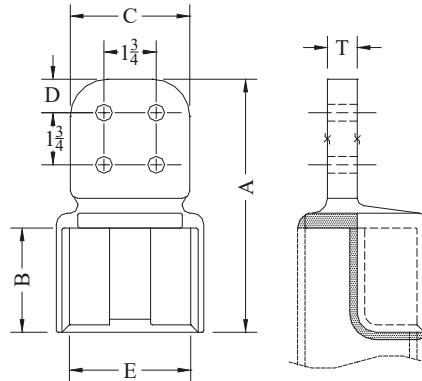
CATALOG NUMBER	PIPE SIZE	NPS	LIMITED ANGLE	NPS	LIMITED ANGLE
WFTIR-6062-4B	2-1/2" - 3" NPS	2-1/2"	0 - 55°	3"	0 - 60°
WFTIR-6467-4B	4" - 5" NPS	4"	0 - 40°	5"	0 - 60°

TYPE WFTIW-63-4B

Weldment
4x4 IWCB to Flat

Castings: 356-T6 Aluminum
Options: See Page 211

Aluminum alloy weldment terminal for connecting 4x4 IWCB to aluminum flat pad. Center-formed tongues has NEMA drilling. Contact sealant is recommended for contact pad after welding.



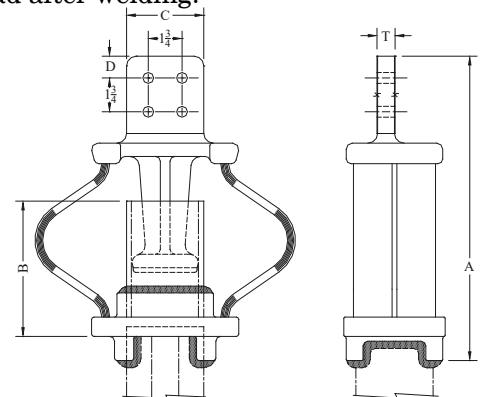
CATALOG NUMBER	CONDUCTOR SIZE	DIMENSIONS - INCHES						WEIGHT (POUNDS)
		A	B	C	D	E	T	
WFTIW-63-4B	4x4 IWACB	8-1/2	3-1/2	4	1-1/8	4	1	4.25

TYPE WFXIW-63-4B

Weldment
4x4 IWCB to Flat

Castings: 356-T6 Aluminum
Laminated Straps: 1100-0 Aluminum
Options: See Page 211

Aluminum weldment expansion terminal for connecting 4x4 IWCB to flat pad. Center-formed tongues has NEMA drilling. Contact sealant is recommended for contact pad after welding.



CATALOG NUMBER	CONDUCTOR SIZE	DIMENSIONS - INCHES					WEIGHT (POUNDS)
		A	B	C	D	T	
WFXIW-63-4B	4x4 IWACB	15	7-1/4	4	1-1/8	7/8	16.55