

ALUMINUM TERMINALS

TYPE WFTO

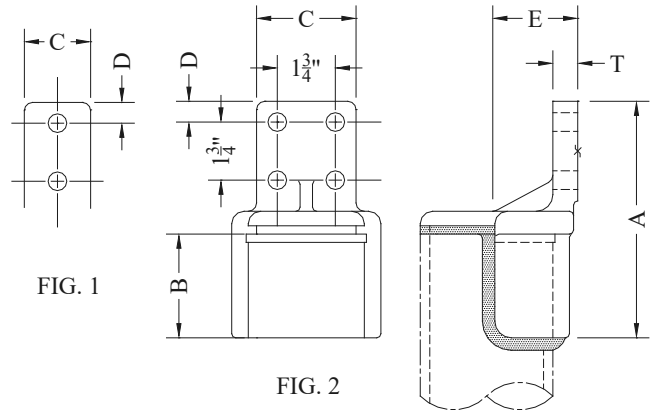
Weldment
Pipe to Flat

Castings: 356-T6 Aluminum
Options: See Page 211

Aluminum alloy weldment terminal for connecting aluminum pipe to flat pad. Side-formed tongues have NEMA drilling. Contact sealant is recommended for contact pad after welding.

Angle connectors may be obtained by specifying desired angle.

Example: WFTO90-58-4A



CATALOG NUMBER	FIG. NO.	PIPE SIZE (NPS)	DIMENSIONS - INCHES						WEIGHT (POUNDS)
			A	B	C	D	E	T	
WFTO-30-2B	1	3/4	5-3/4	2-1/4	2	5/8	1	3/8	1.00
WFTO-30-4A	2		5-5/8	2-1/4	3	5/8	1	5/16	.50
WFTO-30-4B	2		6-5/8	2-1/4	4	1-1/8	1	5/16	1.25
WFTO-39-2B	1	1	5-3/4	2-1/4	2	5/8	1-1/4	3/8	1.00
WFTO-39-4A	2		5-3/4	2-1/4	3	5/8	1-1/4	3/8	.75
WFTO-39-4B	2		6-3/4	2-1/4	4	1-1/8	1-1/4	3/8	1.25
WFTO-49-2B	1	1-1/4	6-3/8	2-1/2	2	5/8	1-3/8	3/8	1.00
WFTO-49-4A	2		6-3/8	2-1/2	3	5/8	1-3/8	3/8	1.00
WFTO-49-4B	2		7-3/8	2-1/2	4	1-1/8	1-3/8	3/8	1.25
WFTO-53-2B	1	1-1/2	6-5/8	2-3/4	2	5/8	1-1/2	7/16	.75
WFTO-53-4A	2		6-7/8	3	3	5/8	1-1/2	3/8	1.25
WFTO-53-4B	2		7-3/16	3	4	1-1/8	1-5/8	7/16	1.25
WFTO-58-2B	1	2	7-3/8	3-1/4	2	5/8	1-3/4	1/2	1.50
WFTO-58-4A	2		7-3/8	3-1/4	3	5/8	1-3/4	1/2	1.75
WFTO-58-4B	2		8	3-1/4	4	1-1/8	1-3/4	1/2	2.00
WFTO-60-2B	1	2-1/2	7-3/8	3-1/2	2	5/8	2	9/16	1.75
WFTO-60-4A	2		7-5/8	3-1/2	3	5/8	2	9/16	2.00
WFTO-60-4B	2		8-3/4	3-1/2	4	1-1/8	2	1/2	2.50
WFTO-62-2B	1	3	7-1/8	3-1/8	2	5/8	2-1/2	3/4	2.50
WFTO-62-4A	2		7-1/8	3-1/8	3	5/8	2-1/2	3/4	2.50
WFTO-62-4B	2		8-1/2	3-1/2	4	1-1/8	2-3/8	5/8	3.00
WFTO-63-2B	1	3-1/2	7-5/8	3-1/2	2	5/8	2-5/8	5/8	3.50
WFTO-63-4A	2		7-5/8	3-1/2	3	5/8	2-5/8	5/8	3.50
WFTO-63-4B	2		8-5/8	3-1/2	4	1-1/8	2-5/8	5/8	3.50
WFTO-64-2B	1	4	7-1/2	3-1/4	2	5/8	2-7/8	3/4	4.00
WFTO-64-4A	2		7-1/2	3-1/4	3	5/8	2-7/8	3/4	3.50
WFTO-64-4B	2		8-1/2	3-1/4	4	1-1/8	2-7/8	3/4	4.00
WFTO-67-4A	2	5	7	3	3	5/8	3-3/8	3/4	7.25
WFTO-67-4B	2		8-1/2	3	4	1-1/8	3-1/2	3/4	4.75
WFTO-69-4B	2	6	9-3/16	4-1/4	4	1-1/8	4	1	6.75