

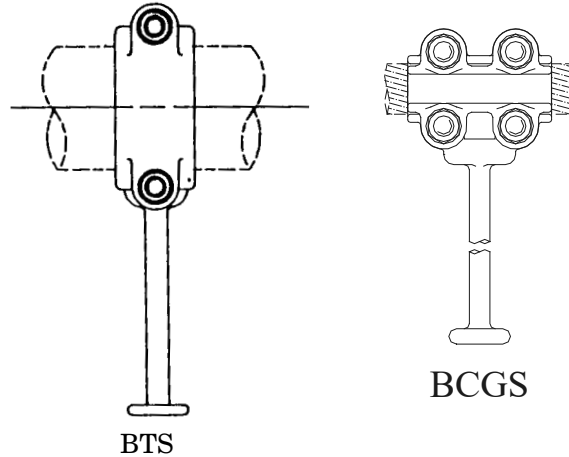
# BRONZE MISCELLANEOUS

**TYPE BTS** (Pipe to Stud)  
**TYPE BCGS** (Cable to Stud)

Castings: Electrical Bronze  
 Hardware: Silicon Bronze

CATALOG NUMBER	CONDUCTOR SIZE
BTS-49	1-1/4" NPS
BTS-53	1-1/2" NPS
BCGS-34	4/0 SOL. - 1000 MCM

Bronze bolted grounding stud for grounding copper pipe/cable  
 Contact factory for further information.

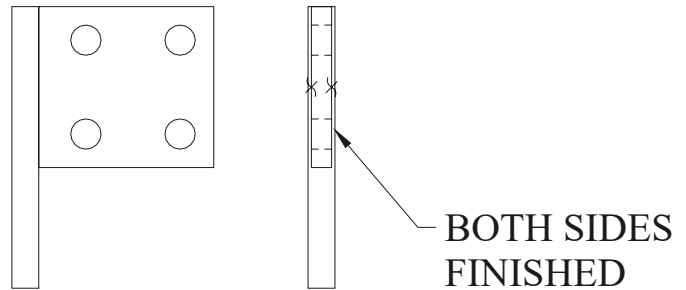


**TYPE TASP**  
 Terminal Adapter  
 Terminal to Flat Pad

Castings: Electrical Bronze

CATALOG NUMBER	STUD DIA.	PAD SIZE
TASP-10-4A	1/2	3" x 3"
TASP-33-4A	1-1/8	3" x 3"

Terminal adapter for transformer to flat pad.  
 Contact factory for further information.



**TYPE BSA**  
 Bolt Circle/Height  
 Adapter

Castings: Electrical Bronze or  
 356-T6 Aluminum

CATALOG NUMBER	BOLT CIRCLE	HEIGHT
BSA-5-3	5" to 3"	1-7/16
BSA-7-5	7" to 5"	1-1/4
BSA3-3-5	5" to 3"	3

Bronze or aluminum bolt circle and/or height adapter.  
 Contact factory for further information.

Add suffix: "-BR" for bronze or  
 "-AL" for aluminum.

