

ALUMINUM TERMINALS

TYPE WFT

Weldment
Pipe to Flat

Castings: 356-T6 Aluminum
Options: See Page 211

Aluminum alloy weldment terminal for connecting aluminum pipe to flat pad. Side-formed tongues have NEMA drilling. Contact sealant is recommended for contact pad after welding.

Angle connectors may be obtained by specifying desired angle.

Example: WFT90-53-2B

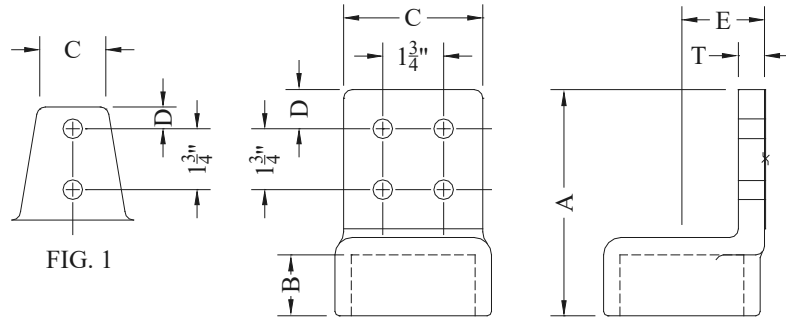


FIG. 2

CATALOG NUMBER	FIG. NO.	PIPE SIZE (NPS)	DIMENSIONS - INCHES						WEIGHT (POUNDS)
			A	B	C	D	E	T	
WFT-30-2B	1	3/4	4-5/8	7/8	2	5/8	1-1/8	3/8	.50
WFT-30-4A	2		4-5/8	7/8	3	5/8	1-1/8	3/8	.60
WFT-30-4B	2		4-5/8	7/8	4	1-1/8	1-1/8	3/8	.75
WFT-39-2B	1	1	4-7/16	7/8	2	5/8	1-3/16	3/8	.50
WFT-39-4A	2		4-3/8	7/8	3	5/8	1-1/4	3/8	1.00
WFT-39-4B	2		5-7/8	7/8	4	1-1/8	1-1/4	3/8	1.65
WFT-49-2B	1	1-1/4	4-5/8	1	2	5/8	1-3/8	3/8	.75
WFT-49-4A	2		4-3/4	1	3	5/8	1-3/8	3/8	.75
WFT-49-4B	2		5-3/4	1	4	1-1/8	1-3/8	3/8	1.25
WFT-53-2B	1	1-1/2	4-13/16	1-3/8	2	5/8	1-1/2	7/16	1.00
WFT-53-4A	2		4-15/16	1-3/8	3	5/8	1-1/2	13/32	1.00
WFT-53-4B	2		6-7/16	1-3/8	4	1-1/8	1-1/2	3/8	1.65
WFT-58-2B	1	2	5-1/8	1-1/2	2	5/8	1-3/4	1/2	1.50
WFT-58-4A	2		5-1/8	1-1/2	3	5/8	1-3/4	1/2	1.50
WFT-58-4B	2		6-1/4	1-1/2	4	1-1/8	1-3/4	1/2	1.65
WFT-60-2B	1	2-1/2	5-1/8	1-1/2	2	5/8	2	5/8	2.00
WFT-60-4A	2		5-1/8	1-1/2	3	5/8	2	5/8	1.75
WFT-60-4B	2		5-7/8	1-1/2	4	1-1/8	2	1/2	2.25
WFT-62-2B	1	3	5-1/2	1-3/4	2	5/8	2-3/8	3/4	3.25
WFT-62-4A	2		5-1/2	1-3/4	3	5/8	2-3/8	3/4	3.25
WFT-62-4B	2		6-1/2	1-3/4	4	1-1/8	2-3/8	3/4	3.25
WFT-63-2B	1	3-1/2	5-5/8	1-7/8	2	5/8	2-5/8	3/4	3.00
WFT-63-4A	2		5-5/8	1-7/8	3	5/8	2-5/8	3/4	3.00
WFT-63-4B	2		6-3/8	1-7/8	4	1-1/8	2-5/8	3/4	3.50
WFT-64-2B	1	4	6	2	2	5/8	2-7/8	3/4	3.25
WFT-64-4A	2		6	2	3	5/8	2-7/8	3/4	3.25
WFT-64-4B	2		6-7/8	2	4	1-1/8	2-7/8	3/4	4.75
WFT-67-4A	2	5	7	2-7/8	3	5/8	3-1/2	1	7.50
WFT-67-4B	2		8	2-7/8	4	1-1/8	3-1/2	1	7.50
WFT-69-4B	2	6	8-1/4	3	4	1-1/8	4-1/4	1-1/4	10.00