

ALUMINUM TERMINALS

TYPE WFC2

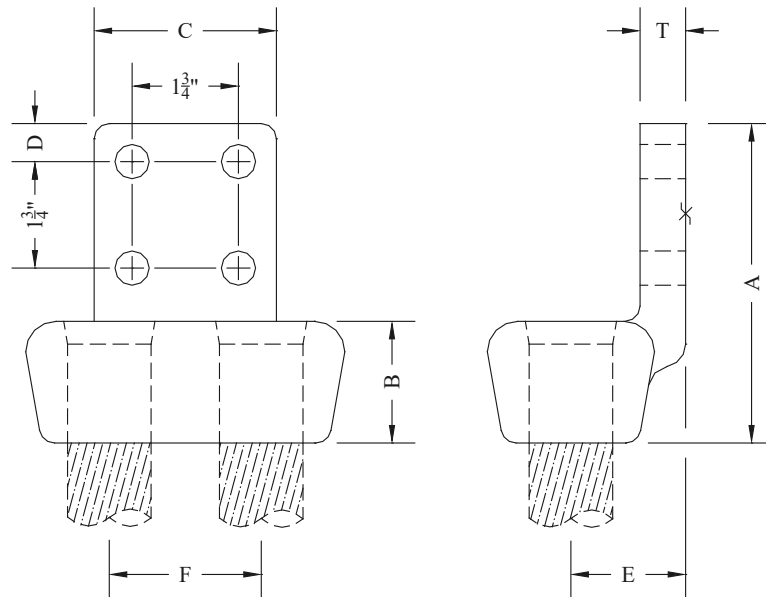
Straight Welded
Two Cables to Flat

Aluminum alloy weldment terminal for connecting two aluminum cables to flat pad. Flat pads have NEMA drilling. Contact sealant is recommended for contact pad after welding.

Angle connectors may be obtained by specifying the desired angle.

Example: WFC290-34-4B

Castings: 356-T6 Aluminum
Options: See Page 211



CATALOG NUMBER	CONDUCTOR RANGE		DIMENSIONS - INCHES							WEIGHT (POUNDS)
	AAC	ACSR	A	B	C	D	E	F	T	
WFC2-13-4A	250 MCM	#4/0	4-3/8	1-3/8	3	5/8	1	1-3/8	3/8	1.00
WFC2-13-4B			5-3/8	1-3/8	4	5/8	1	1-3/8	3/8	1.25
WFC2-16-4A	336.4-350 MCM	266.8-300 MCM	4-3/8	1-3/8	3	5/8	1	1-3/8	3/8	1.00
WFC2-16-4B			5-3/8	1-3/8	4	5/8	1	1-3/8	3/8	1.25
WFC2-18-4A	397.5 MCM	336.4 MCM	4-3/8	1-3/8	3	5/8	1	1-3/8	3/8	1.25
WFC2-18-4B			5-3/8	1-3/8	4	5/8	1	1-3/8	3/8	1.25
WFC2-20-4A	477-500 MCM	397.5 MCM	4-3/4	1-1/2	3	5/8	1-1/8	1-1/4	3/8	1.00
WFC2-20-4B			5-3/4	1-1/2	4	5/8	1-1/8	1-1/4	3/8	1.25
WFC2-21-4A	550-556.5 MCM	-----	4-3/4	1-1/2	3	5/8	1-1/8	1-1/4	3/8	1.00
WFC2-21-4B			5-3/4	1-1/2	4	5/8	1-1/8	1-1/4	3/8	1.25
WFC2-22-4A	556 MCM	477 MCM	4-3/4	1-1/2	3	5/8	1-1/8	1-1/4	3/8	1.00
WFC2-22-4B			5-3/4	1-1/4	4	5/8	1-1/8	1-1/4	3/8	1.25
WFC2-24-4A	636-750 MCM	556.5MCM	4-3/4	1-1/4	3	5/8	1-1/8	1-1/4	3/8	1.00
WFC2-24-4B			5-7/8	1-1/2	4	5/8	1-3/8	1-1/2	3/8	1.30
WFC2-29-4A	750-795 MCM	636-666 MCM	5-3/8	1-7/8	3	5/8	1-3/8	1-3/4	1/2	2.00
WFC2-29-4B			6-3/16	1-13/16	4	5/8	1-9/16	2	5/8	3.00

Continued on next page

ALUMINUM TERMINALS

TYPE WFC2 Continued

CATALOG NUMBER	CONDUCTOR RANGE		DIMENSIONS - INCHES							WEIGHT (POUNDS)
	AAC	ACSR	A	B	C	D	E	F	T	
WFC2-34-4A	954-1033 MCM	795 MCM	6	2-3/4	3	5/8	1-3/4	2	7/8	2.50
WFC2-34-4B			7-1/8	2-3/4	4	5/8	1-3/4	2	7/8	3.00
WFC2-35-4A	1033.5 MCM	954 MCM	6	2-3/4	3	5/8	1-3/4	2	7/8	2.50
WFC2-35-4B			7-1/8	2-3/4	4	5/8	1-3/4	2	7/8	3.00
WFC2-36-4A	1100-1033.5 MCM	954 MCM	5-1/4	2	3	5/8	1-5/8	2	11/16	3.00
WFC2-36-4B			6-1/2	2-1/2	4	5/8	1-7/8	2-1/2	3/4	3.50
WFC2-37-4A	1113-1192 MCM	1033.5 MCM	5	1-3/4	3	5/8	1-9/16	2	3/4	3.00
WFC2-37-4B			6-1/8	1-3/4	4	1-1/8	1-9/16	2	3/4	3.00
WFC2-39-4A	1250-1300 MCM	1113-1192 MCM	5-1/4	2	3	5/8	1-7/8	2-1/2	3/4	2.50
WFC2-39-4B			6-1/4	2	4	1-1/8	1-11/16	1-3/4	5/8	2.50
WFC2-41-4A	1351-1431 MCM	1192-1272 MCM	6	2-1/2	3	5/8	1-3/4	2-1/2	3/4	2.50
WFC2-41-4B			6-7/8	2-1/2	4	1-1/8	1-3/4	2-1/2	3/4	2.50
WFC2-43-4A	1500-1600 MCM	1351(54/19), 1431 MCM	6	2-1/2	3	5/8	1-3/4	2	3/4	2.25
WFC2-43-4B			6-7/8	2-1/2	4	1-1/8	1-3/4	2	3/4	2.75
WFC2-46-4A	1700-1750 MCM	1510.5-1590 MCM	6-1/8	2-3/4	3	5/8	2-1/4	3	1	6.00
WFC2-46-4B			7-1/8	2-3/4	4	1-1/8	2-1/4	3	1	6.00
WFC2-49-4A	2000 MCM	1780-2034 MCM	6-3/4	2-3/4	3	5/8	2-1/4	3	1-1/8	5.70
WFC2-49-4B			7-1/4	2-3/4	4	1-1/8	2-3/8	3	1-1/8	5.70
WFC2-50-4A	2300 MCM	2167, 2156 MCM	6-5/8	2-3/4	3	5/8	2-1/4	3	1	4.75
WFC2-50-4B			7-1/8	2-3/4	4	1-1/8	2-1/4	3	1	5.00
WFC2-52-4A	2500 MCM	2312 MCM	6-1/4	2-3/4	3	5/8	2-1/8	3	3/4	4.00
WFC2-52-4B			6-3/4	2-3/4	4	1-1/8	2-1/8	3	3/4	4.25