

# ALUMINUM TERMINALS

## TYPE WFC

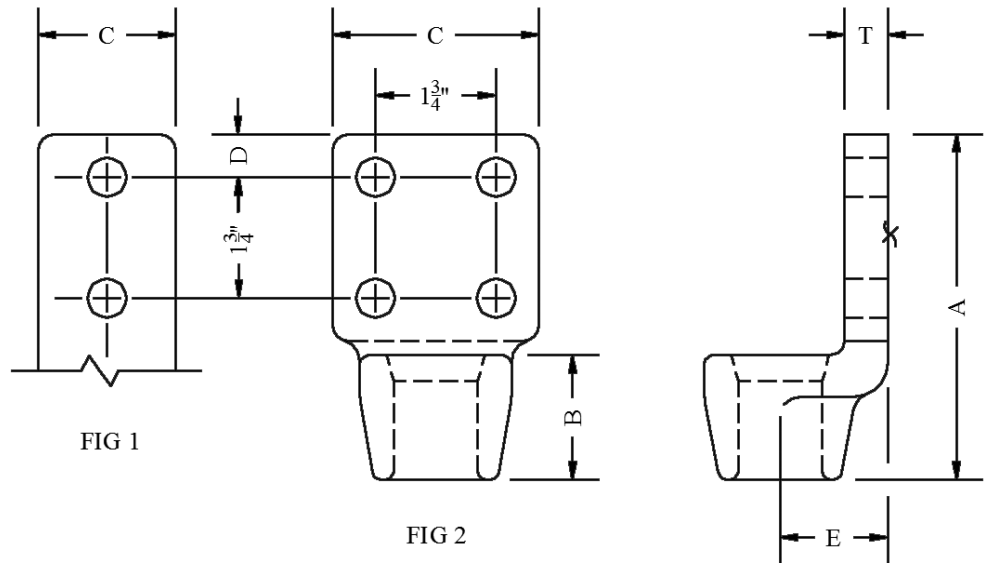
Straight Welded  
Cable to Flat

Aluminum alloy weldment terminal for connecting aluminum cable to flat pad. Flat pads have NEMA drilling. Contact sealant is recommended for contact pad after welding.

Angle connectors may be obtained by specifying the desired angle.

Example: WFC90-34-4A

Castings: 356-T6 Aluminum  
Hardware: Aluminum Alloy  
Options: See Page 211



CATALOG NUMBER	FIG. NO.	CONDUCTOR RANGE		DIMENSIONS-INCHES						WEIGHT (POUNDS)
		AAC	ACSR	A	B	C	D	E	T	
WFC-09-2B	1	2/0 MCM	1/0-2/0 MCM	4	7/8	2	5/8	21/32	1/4	.35
WFC-09-4A	2			4-1/2	1-1/4	3	5/8	1-1/8	3/8	.50
WFC-10-2B	1	3/0 MCM	-----	4-1/2	1-1/4	2	5/8	1-1/8	3/8	.50
WFC-10-4A	2			4-1/2	1-1/4	3	5/8	1-1/8	3/8	.50
WFC-11-2B	1	4/0 MCM	-----	4-1/2	1-1/2	2	5/8	13/16	5/16	.35
WFC-11-4A	2			4-1/2	1-1/4	3	5/8	1-1/8	3/8	.50
WFC-13-2B	1	250 MCM	4/0 MCM	4-1/4	1-1/4	2	5/8	13/16	5/16	.50
WFC-13-4A	2			4-1/2	1-1/4	3	5/8	1-1/8	3/8	.50
WFC-15-2B	1	-----	266.8 MCM	4-1/2	1-1/4	2	5/8	1	3/8	.40
WFC-15-4A	2			4-1/2	1-1/4	3	5/8	1-1/8	3/8	.50
WFC-16-2B	1	336.4-350 MCM	266.8-300 MCM	4-1/2	1-1/4	2	5/8	1	3/8	.40
WFC-16-4A	2			4-1/2	1-1/4	3	5/8	1-1/8	3/8	.50
WFC-18-2B	1	397.5 MCM	336.4 MCM	4-1/2	1-1/4	2	5/8	1	3/8	.40
WFC-18-4A	2			4-1/2	1-1/4	3	5/8	1-1/8	3/8	.50
WFC-20-2B	1	450-500 MCM	397.5 MCM	4-3/4	1-1/2	2	5/8	1-1/8	3/8	.50
WFC-20-4A	2			4-3/4	1-1/2	3	5/8	1-1/8	3/8	.75
WFC-21-2B	1	550-556.5 MCM	477 MCM	4-3/4	1-1/2	2	5/8	1-1/8	3/8	.50
WFC-21-4A	2			4-3/4	1-1/2	3	5/8	13/16	7/16	.85
WFC-22-2B	1	-----	477 MCM	4-3/4	1-1/2	2	5/8	1-1/4	7/16	.85
WFC-22-4A	2			4-3/4	1-1/2	3	5/8	13/16	7/16	.85
WFC-24-2B	1	636-750 MCM	556.5 MCM	5-1/4	1-7/8	2	5/8	1-1/4	1/2	.75
WFC-24-4A	2			5-1/4	1-7/8	3	5/8	1-1/4	1/2	1.00

Continued on next page

# ALUMINUM TERMINALS

## TYPE WFC Continued

CATALOG NUMBER	FIG. NO.	CONDUCTOR RANGE		DIMENSIONS-INCHES						WEIGHT (POUNDS)
		AAC	ACSR	A	B	C	D	E	T	
WFC-29-2B	1	750-795 MCM	636-666 MCM	5-1/8	1-7/8	2	5/8	1-3/8	1/2	.75
WFC-29-4A	2			5-1/4	1-7/8	3	5/8	1-3/8	1/2	1.00
WFC-34-2B	2	954-1033 MCM	795-954 MCM	5	1-3/4	2	5/8	1-9/16	5/8	1.00
WFC-34-4A	2			5	1-3/4	3	5/8	1-9/16	5/8	1.00
WFC-34-4B	2			6-3/8	2	4	1-1/8	1-1/2	1/2	1.66
WFC-35-2B	1	954-1113 MCM	954 MCM	5	1-3/4	2	5/8	1-9/16	5/8	1.00
WFC-35-4A	2			5	1-3/4	3	5/8	1-9/16	5/8	1.00
WFC-35-4B	2			6-1/4	2	4	1-1/8	1-3/8	1/2	1.25
WFC-36-2B	1	1000-1033.5 MCM	954 MCM	5	1-3/4	2	5/8	1-9/16	5/8	1.00
WFC-36-4A	2			5	1-3/4	3	5/8	1-9/16	5/8	1.00
WFC-36-4B	2			6-1/4	2	4	1-1/8	1-3/8	1/2	1.25
WFC-37-2B	1	1113-1272 MCM	1027-1192 MCM	5-1/8	1-7/8	2	5/8	1-3/8	1/2	1.00
WFC-37-4A	2			5-1/8	1-7/8	3	5/8	1-3/8	1/2	1.00
WFC-37-4B	2			6-1/4	1-7/8	4	1-1/8	1-7/16	9/16	1.50
WFC-39-2B	1	1272 MCM	-----	5-1/8	1-7/8	2	5/8	1-3/8	1/2	1.00
WFC-39-4A	2			5-1/8	1-7/8	3	5/8	1-3/8	1/2	1.00
WFC-39-4B	2			6-5/8	2-1/4	4	1-1/8	1-9/16	5/8	1.75
WFC-41-2B	1	1351-1430 MCM	1192-1272 MCM	5-3/4	2-3/8	2	5/8	1-7/16	9/16	1.50
WFC-41-4A	2			5-3/4	2-3/8	3	5/8	1-7/16	9/16	1.50
WFC-41-4B	2			6-7/8	2-3/8	4	1-1/8	2-1/8	3/4	1.75
WFC-43-2B	1	1500-1600 MCM	1351-1431 MCM	5-7/8	2-1/2	2	5/8	1-5/8	5/8	1.50
WFC-43-4A	2			5-7/8	2-1/2	3	5/8	1-5/8	5/8	1.50
WFC-43-4B	2			6-7/8	2-1/2	4	1-1/8	1-5/8	5/8	2.00
WFC-46-4A	2	1750 MCM	1590 MCM	5-7/8	2-1/2	3	5/8	1-5/8	5/8	1.50
WFC-46-4B	2			7-5/16	2-5/8	4	1-1/8	2-1/16	3/4	2.75
WFC-49-4A	2	2000 MCM	1780-2034 MCM	6-5/16	2-3/4	3	5/8	2-1/16	3/4	2.50
WFC-49-4B	2			7-5/16	2-3/4	4	1-1/8	2-1/16	3/4	2.50
WFC-51-4A	2	2250-2336 MCM	2156 MCM	5-3/4	2-3/8	3	5/8	2	3/4	2.50
WFC-51-4B	2			6-3/4	2-3/8	4	1-1/8	2	3/4	2.50
WFC-52-4A	2	2500 MCM	-----	6-1/4	2-3/4	3	5/8	2-1/8	3/4	2.50
WFC-52-4B	2			6-3/4	2-3/4	4	1-1/8	2-1/8	3/4	2.50
WFC-54-4A	2	3000 MCM	-----	6-3/4	2-3/4	3	5/8	2-1/4	7/8	4.00
WFC-54-4B	2			7-1/4	2-3/4	4	1-1/8	2-1/4	7/8	4.00
WFC-56-4A	2	3500 MCM	-----	7	3	3	5/8	2-1/4	1-1/8	5.25
WFC-56-4B	2			7-1/2	3	4	1-1/8	2-1/4	1-1/8	5.50