

EHV TERMINALS

TYPE WHV-FXT

Weldment Expansion
Pipe To Flat

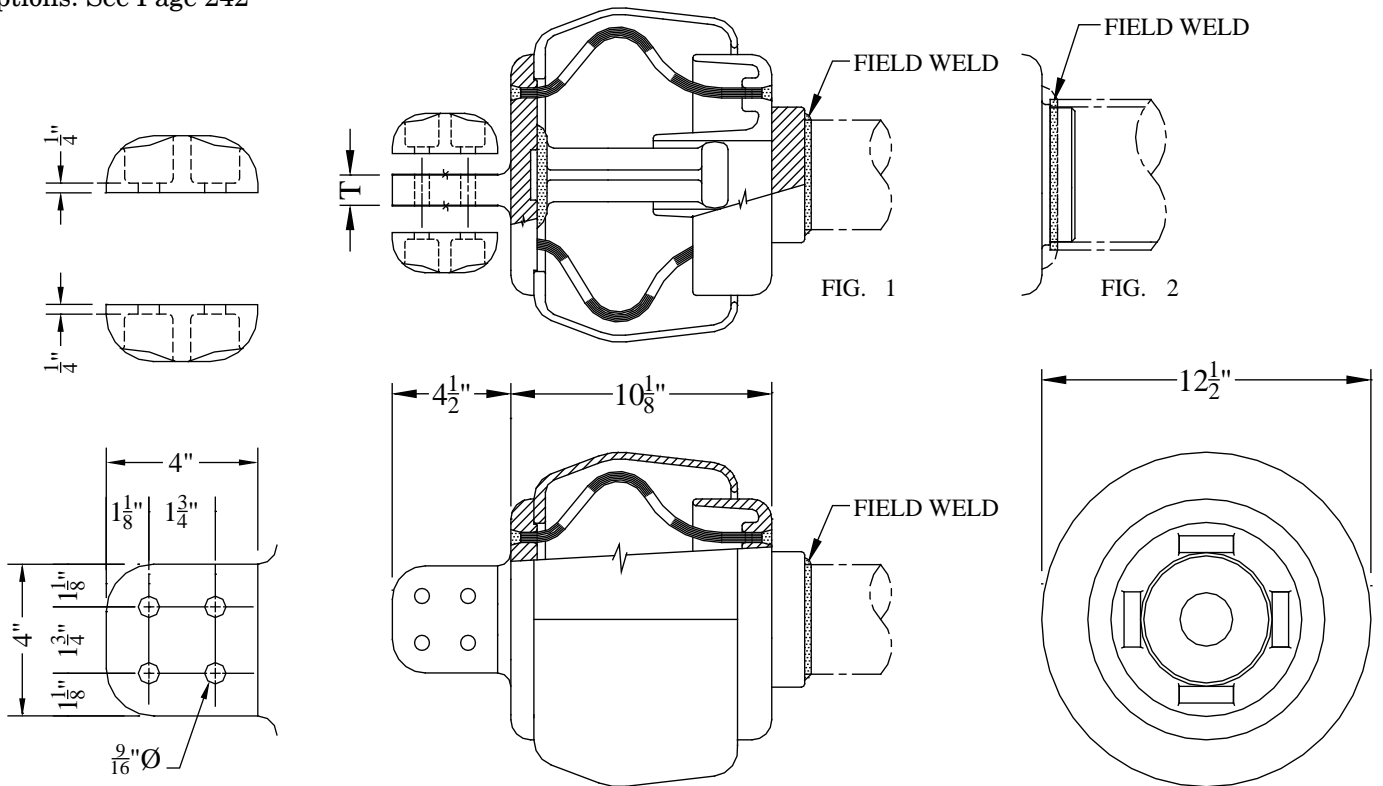
Designed for corona-free service at 500 KV. The compact design reduces interference problems with shield rings on EHV switchgear, while allowing 2-inch linear movement of the pipe conductor. Two hardware shields are provided, except when extension pad is specified by addition of suffix (E) to the catalog number.

EXAMPLE: WHV-FXT-64-4F-E.

Casting: 356-T6 Aluminum

Laminated Straps: 1100-0 Aluminum

Options: See Page 242



CATALOG NUMBER	PIPE SIZE (NPS)		FIG. NO.	CURRENT CAPACITY	T	WEIGHT (POUNDS)
	SCH 40	SCH 80				
WHV-FXT-58-4F	2	----	1	2000	7/8	30.40
WHV-FXT-58H-4F	----	2	1	2000	7/8	30.40
WHV-FXT-60-4F	2-1/2	----	1	2000	7/8	26.65
WHV-FXT-60H-4F	----	2-1/2	1	2000	7/8	26.65
WHV-FXT-62-4F	3	----	1	2400	7/8	27.00
WHV-FXT-62H-4F	----	3	1	2400	7/8	27.00
WHV-FXT-63-4F	3-1/2	----	1	2400	1-1/8	28.95
WHV-FXT-63H-4F	----	3-1/2	1	2400	1-1/8	28.95
WHV-FXT-64-4F	4	----	2	3000	1-1/8	31.75
WHV-FXT-64H-4F	----	4	2	3000	1-1/8	31.75
WHV-FXT-67-4F	5	----	2	3000	1-1/8	31.75
WHV-FXT-67H-4F	----	5	2	3000	1-1/8	31.75
WHV-FXT-69-4F	6	----	2	3000	1-1/8	32.50
WHV-FXT-69H-4F	----	6	2	3000	1-1/8	32.50