

BRONZE BUS SUPPORTS

TYPE ASTI-BR

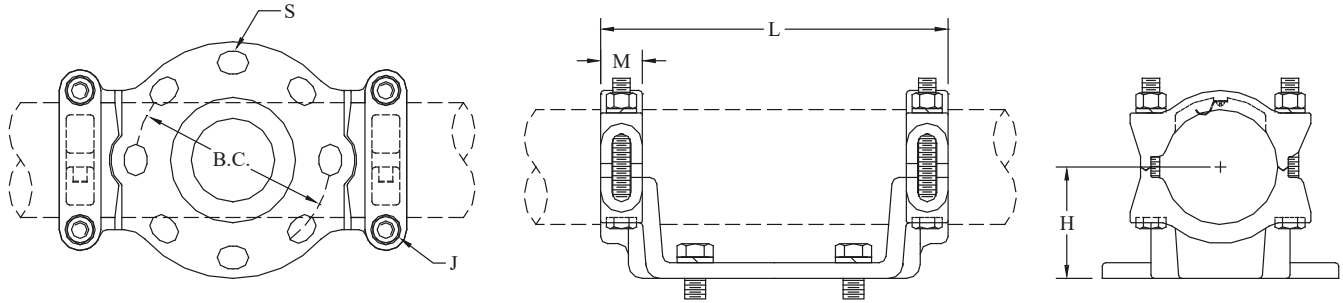
Horizontal Bolted
Pipe to Insulator

Castings: Electrical Bronze
Clamping Hardware: Silicon Bronze
Mounting Hardware: Galvanized Steel

Bronze alloy support for copper pipe. Slip or rigid fit is provided by rotating cap members. Each cap member is provided with a static spring.

Hardware supplied for CAP mounting. For PIN mounting, add suffix (P) to catalog number.

Example: ASTI-63-3P-BR



| CATALOG NUMBER | PIPE SIZE (NPS) | B.C. | DIMENSIONS-INCHES | | | | | WEIGHT (POUNDS) |
|----------------|-----------------|-----------------------------|-------------------|-------|-------|----------------|-----|-----------------|
| | | | H | L | M | S | J | |
| ASTI-30-3-BR | 3/4 | 3 | 2 | 8 | 1-1/2 | 9/16 x 13/16 | 1/2 | 5.60 |
| ASTI-30-5-BR | | CONSULT FACTORY FOR DETAILS | | | | | | |
| ASTI-39-3-BR | 1 | 3 | 2 | 7-1/2 | 1-1/8 | 9/16 x 13/16 | 1/2 | 6.20 |
| ASTI-39-5-BR | | 5 | 2-1/4 | 9-3/4 | 1-1/8 | 11/16 x 1-1/16 | 1/2 | 7.35 |
| ASTI-49-3-BR | 1-1/4 | 3 | 2-1/4 | 7-1/8 | 1-3/8 | 9/16 x 13/16 | 1/2 | 8.70 |
| ASTI-49-5-BR | | 5 | 2-1/4 | 9-1/2 | 1-3/8 | 11/16 x 1-1/8 | 1/2 | 10.70 |
| ASTI-53-3-BR | 1-1/2 | 3 | 2-1/2 | 7-1/8 | 1-3/8 | 9/16 x 13/16 | 1/2 | 7.05 |
| ASTI-53-5-BR | | 5 | 2-1/2 | 9-5/8 | 1-3/8 | 11/16 x 1-1/16 | 1/2 | 9.10 |
| ASTI-58-3-BR | 2 | 3 | 2-3/4 | 7-3/8 | 1-1/2 | 9/16 x 13/16 | 1/2 | 8.80 |
| ASTI-58-5-BR | | 5 | 2-3/4 | 9-7/8 | 1-1/2 | 11/16 x 1-1/16 | 1/2 | 9.95 |
| ASTI-60-3-BR | 2-1/2 | 3 | 3-1/8 | 7-1/2 | 1-1/2 | 9/16 x 13/16 | 1/2 | 11.35 |
| ASTI-60-5-BR | | 5 | 3-1/8 | 9-5/8 | 1-1/2 | 11/16 x 15/16 | 1/2 | 12.50 |
| ASTI-62-3-BR | 3 | 3 | 3-5/8 | 8-1/2 | 1-1/2 | 9/16 x 13/16 | 5/8 | 19.15 |
| ASTI-62-5-BR | | 5 | 3-5/8 | 9-3/4 | 1-1/2 | 11/16 x 15/16 | 5/8 | 20.95 |
| ASTI-63-3-BR | 3-1/2 | 3 | 4 | 8-1/4 | 1-1/2 | 9/16 x 13/16 | 5/8 | 20.20 |
| ASTI-63-5-BR | | 5 | 4 | 9-3/4 | 1-1/2 | 11/16 x 1-1/16 | 5/8 | 21.95 |
| ASTI-64-3-BR | 4 | 3 | 4-1/2 | 8-1/2 | 1-1/2 | 9/16 x 13/16 | 5/8 | 20.85 |
| ASTI-64-5-BR | | 5 | 4-1/2 | 10 | 1-1/2 | 11/16 x 1-1/16 | 5/8 | 23.70 |