

# EHV TERMINALS

Designed for corona-free service at 345 KV and 500 KV as indicated. Catalog numbers listed below do not include hardware shields. When hardware shields are required, add suffix (HS) to catalog number.

Example: WFTICHV-60-4B-HS

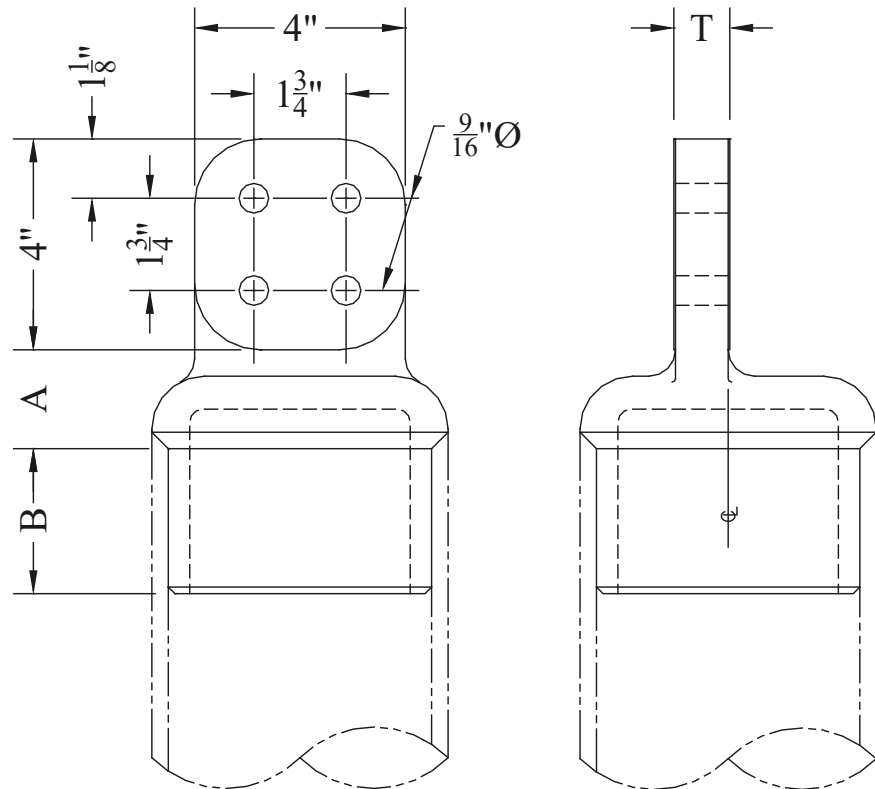
Note: See hardware shield AA-1094.

## TYPE WFTICHV

Internal Weldment  
Pipe to Flat

Casting: 356-T6 Aluminum

Options: See Page 242



CATALOG NUMBER	PIPE SIZE		MAX. KV	DIMENSION - INCHES			WEIGHT (POUNDS)
	(NPS)	(EHPS)		A	B	T	
WFTICHV-58-4B	2	----	345	1-1/2	1-1/2	1/2	2.00
WFTICHV-58H-4B	----	2	345	1-1/2	1-1/2	1/2	2.00
WFTICHV-60-4B	2-1/2	----	345	1-1/2	2	5/8	1.75
WFTICHV-60H-4B	----	2-1/2	345	1-1/2	2	5/8	1.75
WFTICHV-62-4B	3	----	500	1-3/4	2	5/8	2.25
WFTICHV-62H-4B	----	3	500	1-3/4	2	5/8	2.25
WFTICHV-63-4B	3-1/2	----	500	1-3/4	2	3/4	3.00
WFTICHV-63H-4B	----	3-1/2	500	1-3/4	2	3/4	3.00
WFTICHV-64-4B	4	----	500	1-3/4	2	7/8	3.25
WFTICHV-64H-4B	----	4	500	1-3/4	2	7/8	3.25
WFTICHV-67-4B	5	----	500	1-7/8	2-3/4	1	5.25
WFTICHV-67H-4B	----	5	500	1-7/8	3-3/4	1	5.25
WFTICHV-69-4B	6	----	500	2	3	1-1/8	6.50
WFTICHV-69H-4B	----	6	500	2	3	1-1/8	6.50