

EHV TERMINALS

TYPE WFTCHV

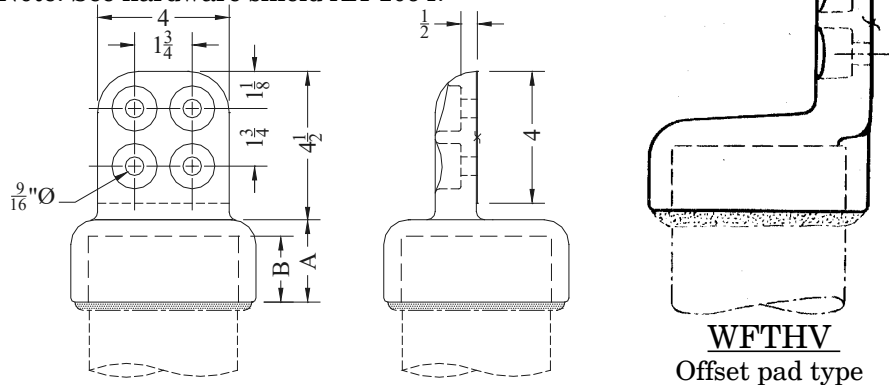
Weldment
Pipe To Flat

Casting: 356-T6 Aluminum
Options: See Page 242

Designed for corona-free service at 345 KV and 500 KV as indicated. Normally furnished without hardware shield. When hardware shield is required, add suffix (HS) to catalog number.

Example: WFTCHV-63-4B-HS.

Note: See hardware shield AA-1094.



CATALOG NUMBER	PIPE SIZE (NPS)	MAX. KV	DIMENSIONS - INCHES		WEIGHT (POUNDS)
			A	B	
WFTCHV-58-4B	2	345	1-7/8	1-1/2	3.00
WFTCHV-60-4B	2-1/2	345	2	1-1/2	2.75
WFTCHV-62-4B	3	500	2-1/4	1-3/4	3.25
WFTCHV-63-4B	3-1/2	500	2-5/16	1-7/8	3.50
WFTCHV-64-4B	4	500	2-1/2	2	4.50
WFTCHV-67-4B	5	500	3-1/2	2-3/4	7.25
WFTCHV-69-4B	6	500	3-1/2	2-3/4	8.50

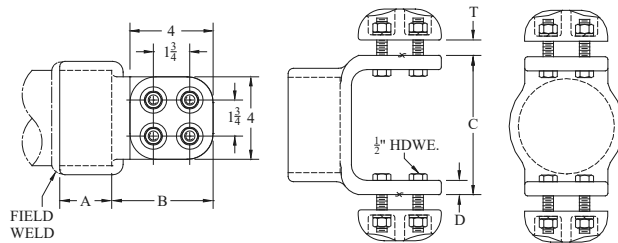
TYPE WFTD

Weldment Bifurcating
Pipe To Flat

Casting: 356-T6 Aluminum
Pad Mounting Hardware: Aluminum Alloy
Options: See Page 242

Type WFTD is designed for corona-free service at voltage levels shown, when used with two EHV compression terminals to form a Bifurcating pipe to cable joint.

Note: (2) AA-1094 hardware shields are furnished with this catalog number.



CATALOG NUMBER	PIPE SIZE (NPS)	MAX. KV	DIMENSIONS - INCHES					WEIGHT (POUNDS)
			A	B	C	D	T	
WFTD-58-4B	2	345	1-1/2	4-3/4	5	5/8	3/4	7.30
WFTD-60-4B	2-1/2	345	1-1/2	4-3/4	5	5/8	3/4	7.30
WFTD-62-4B	3	500	1-3/4	4-7/8	5-3/8	3/4	7/8	7.80
WFTD-63-4B	3-1/2	500	1-7/8	4-7/8	6	3/4	7/8	7.75
WFTD-64-4B	4	500	2-1/2	4-7/8	6-3/4	11/16	7/8	7.50
WFTD-67-4B	5	500	2-5/8	5	7-1/2	7/8	1	11.30
WFTD-69-4B	6	500	2-3/4	5	8-1/8	7/8	1	14.10