

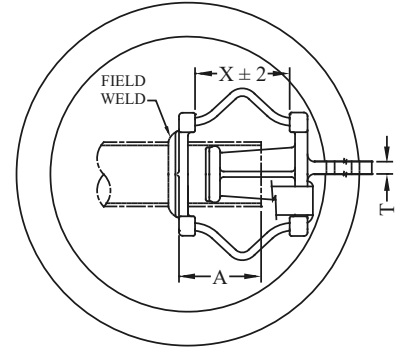
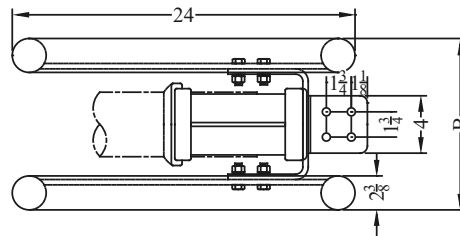
EHV TERMINALS

TYPE WFXTC-V-CS

Weldment
Expansion - Pipe to Flat

Aluminum weldment expansion terminal for Aluminum pipe to flat pads. Designed for corona-free service at 345 & 500KV. The 4-inch allowable movement accommodates 130 feet of aluminum bus over a 200° F temperature range. For pad extension, add suffix (E) to catalog number. SPECIFY: CS1 for 345KV or CS2 for 500 KV

Castings: 356-T6 Aluminum
Laminated Straps: 1100-0 Aluminum
Shield Rings: 6063-T6 Aluminum
Options: See Page 242



CATALOG NUMBER	PIPE SIZE		CURRENT CAPACITY	DIMENSION - INCHES				WEIGHT (POUNDS)
	(NPS)	(EHPS)		A	B	T	X	
WFXTC-V-63-4B	3-1/2	----	2535A	6	12	7/8	6-1/2	12.40
WFXTC-V-63H-4B	----	3-1/2	2535A	6	12	7/8	6-1/2	12.40
WFXTC-V-64-4B	4	----	3000A	6	12	7/8	6-1/2	15.10
WFXTC-V-64H-4B	----	4	3000A	6	12	7/8	6-1/2	15.10
WFXTC-V-67-4B	5	----	3700A	7-3/8	14	1-1/8	8	22.00
WFXTC-V-67H-4B	----	5	3700A	7-3/8	14	1-1/8	8	22.00
WFXTC-V-69-4B	6	----	4500A	7-3/8	14	1-1/8	8	28.50
WFXTC-V-69H-4B	----	6	4500A	7-3/8	14	1-1/8	8	28.50

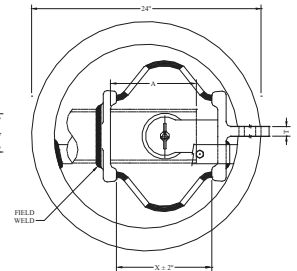
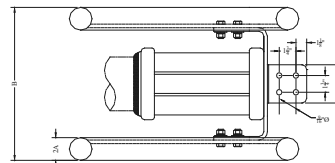
* CONTACT FACTORY FOR OTHER CONDUCTOR COMBINATIONS

TYPE WFRTC-V

Weldment Pipe to Flat
Expansion - Roller Guide

Designed for corona-free service at 500KV. The roller guide allows friction-free movement of the pipe, eliminating the possibility of misalignment of switch-gear contacts due to insulator deflection. The 4-inch allowable movement accommodates 130 feet of aluminum bus over a 200°F temperature range. For pad extension, add suffix (E) to catalog number.

Castings: 356-T6 Aluminum
Laminated Straps: 1100-0 Aluminum
Shield Rings: 6063-T6 Aluminum
Options: See Page 242



CATALOG NUMBER	PIPE SIZE		CURRENT CAPACITY	DIMENSION - INCHES				WEIGHT (POUNDS)
	(NPS)	(EHPS)		A	B	T	X	
WFRTC-V-63-4B	3-1/2	----	2535A	9-1/8	12	3/4	10	26.00
WFRTC-V-63H-4B	----	3-1/2	2535A	9-1/8	12	3/4	10	26.00
WFRTC-V-64-4B	4	----	3000A	9-1/8	12	1	10	37.10
WFRTC-V-64H-4B	----	4	3000A	9-1/8	12	1	10	37.10
WFRTC-V-67-4B	5	----	3700A	10	14-1/2	1-1/8	12	43.40
WFRTC-V-67H-4B	----	5	3700A	10	14-1/2	1-1/8	12	43.40
WFRTC-V-69-4B	6	----	4500A	10	14-1/2	1-1/8	12	40.00
WFRTC-V-69H-4B	----	6	4500A	10	14-1/2	1-1/8	12	40.00