

EHV TERMINALS

ALUMINUM • 345 - 500 KV

TYPE WFCHV

Weldment
Cable to Flat

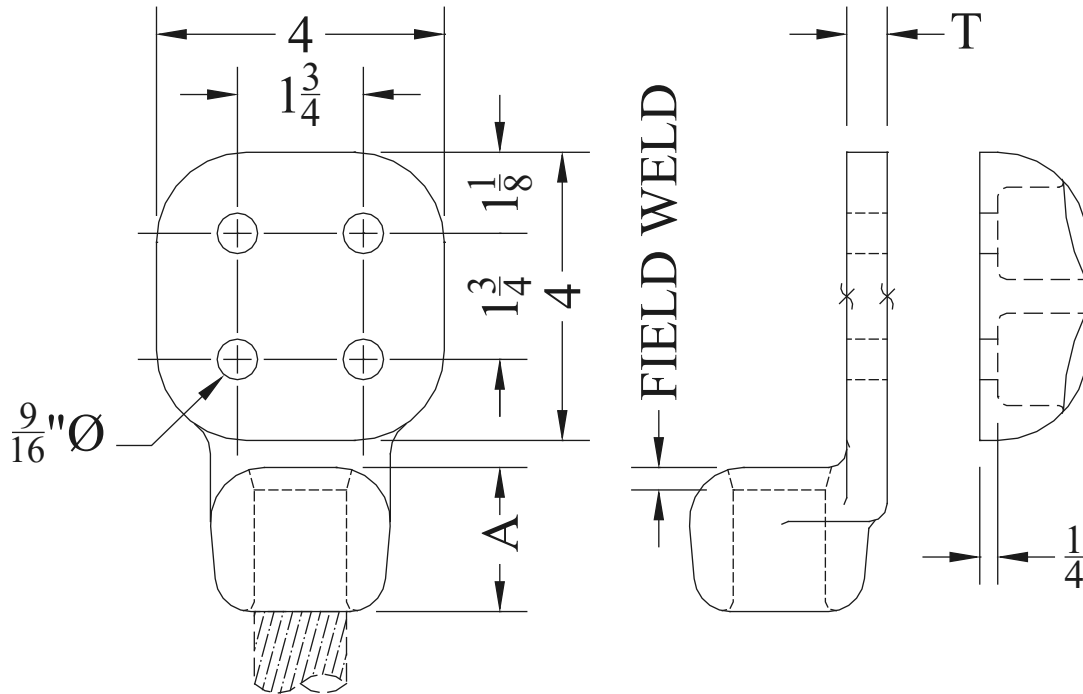
Designed for corona-free service at 345 KV, either singly or paired back-to-back as noted. Pads are finished both sides. One hardware shield is furnished as part of the catalog number. Where an additional shield is required, add suffix (HS) to catalog number. For 90° pad angle, add suffix (90) to the catalog number.

Example: WFCHV-90-52-4B.

Note: See hardware shield AA-1094.

Castings: 356-T6 Aluminum

Options: See Page 242



CATALOG NUMBER	CONDUCTOR SIZE (MCM)		DIMENSIONS - INCHES		WEIGHT (POUNDS)
	AAC	ACSR	A	T	
WFCHV-29-4B	795	636 - 666	1-7/8	1/2	2.65
WFCHV-34-4B	954 - 1033	795	2	1/2	2.80
WFCHV-36-4B	1113	954	2	9/16	2.90
WFCHV-37-4B	1113 - 1272	1027 - 1192	2	9/16	2.90
WFCHV-39-4B	1250 - 1300	1113 - 1192	2-1/4	5/8	2.90
WFCHV-41-4B	1250 - 1510	1192 - 1272	2-3/8	3/4	2.90
WFCHV-43-4B	1590	1351 - 1431	2-5/8	3/4	3.60
WFCHV-46-4B	1750	1590	2-5/8	3/4	3.90
WFCHV-49-4B	2000	1780 - 2034	2-3/4	3/4	3.60
WFCHV-52-4B	2500	2312	2-3/4	7/8	5.10
WFCHV-56-4B	3500	----	3	1	6.00