

ALUMINUM BUS SUPPORTS

TYPE WXCTO

Weldment Expansion
Pipe to Insulator

Castings: 356-T6 Aluminum
Mounting Hardware: Galvanized Steel
Laminated Straps - 1100-0 Aluminum

Aluminum alloy, horizontal weldment, expansion bus support for aluminum pipe.

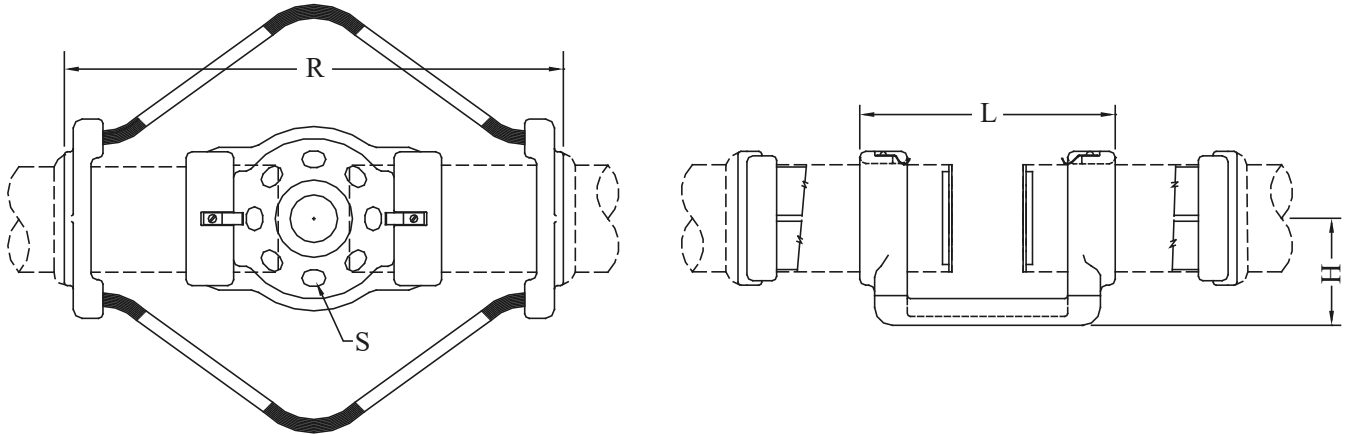
Hardware supplied for CAP mounting. For PIN mounting, add suffix (P) to catalog number. Example WXCTO-63-5P

Add suffix (H) & (-EP) to catalog number for Schedule 80 pipe, when welded end plugs are desired. Example: WXCTO-58H-3-EP

Add suffix (-EP) for weldment end plugs, for NPS.

Example: WXCTO-58-3-EP

Also available bolted in lieu of welded, See AXCTO Page 10.



CATALOG NUMBER	PIPE SIZE (NPS)	B.C.	DIMENSIONS-INCHES				WEIGHT (POUNDS)
			H	L	R	S	
WXCTO-53-3	1-1/2	3	2-1/2	7-1/4	13-1/2	9/16 x 13/16	6.95
WXCTO-53-5		5	2-1/2	9-1/4	15-1/2	11/16 x 1	7.70
WXCTO-58-3	2	3	2-3/4	7-1/4	16-1/4	9/16 x 13/16	8.80
WXCTO-58-5		5	2-3/4	9-1/8	16-1/4	11/16 x 1	9.30
WXCTO-60-3	2-1/2	3	3-1/8	7-1/4	16-3/4	9/16 x 13/16	12.60
WXCTO-60-5		5	3-1/8	9-1/4	18-1/4	11/16 x 1	14.30
WXCTO-62-3	3	3	3-5/8	7-1/4	17	9/16 x 13/16	12.60
WXCTO-62-5		5	3-5/8	9-1/4	18-1/4	11/16 x 1	14.30
WXCTO-62-7		7	3-5/8	12-1/2	20-1/4	13/16 x 1-1/8	16.05
WXCTO-63-3	3-1/2	3	4	7-1/4	15-1/4	9/16 x 13/16	14.85
WXCTO-63-5		5	4	9-1/4	20-1/4	11/16 x 1	17.55
WXCTO-63-7		7	4	12-1/2	22-1/4	13/16 x 1-5/16	21.15
WXCTO-64-3	4	3	4-1/2	7-1/8	20	9/16 x 13/16	20.85
WXCTO-64-5		5	4-1/2	10-3/4	21	11/16 x 1	25.20
WXCTO-64-7		7	4-1/2	12-1/2	22-1/4	13/16 x 1-5/16	27.00
WXCTO-67-3	5	3	5	7-3/8	16	9/16 x 13/16	27.95
WXCTO-67-5		5	5	13-3/4	26-3/4	11/16 x 1-1/16	43.45
WXCTO-67-7		7	5	13-1/2	26-5/8	13/16 x 1-5/16	43.30
WXCTO-69-3	6	3	5-1/2	13	25-1/4	9/16 x 13/16	58.30
WXCTO-69-5		5	5-1/2	14	27	11/16 x 1-1/16	56.65
WXCTO-69-7		7	5-1/2	13-1/2	27	13/16 x 1-3/16	58.10