

# EHV TERMINALS

ALUMINUM • 345 - 500kV

## TYPE WFC2HV

Weldment  
Two Cable to Flat

Designed for corona-free service at 345 and 500kV, either singly or paired back-to-back as noted. Pads are finished both sides. One hardware shield is furnished as part of the catalog number. Where an additional shield is required, add suffix (HS) to catalog number.

For 90° pad angle, add (90) to the catalog number.

Example: WFC2HV90-52-4B-HS.

Note: See hardware shield AA-1094 or HS-6B.

Castings: 356-T6 Aluminum  
Options: See Page 242

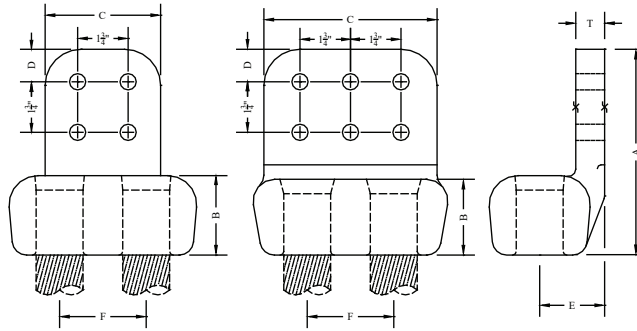


FIG. 1

FIG. 2

CATALOG NUMBER	FIG NO	CONDUCTOR RANGE (MCM)		DIMENSIONS - INCHES							WEIGHT (POUNDS)
		AAC	ACSR	A	B	C	D	E	F	T	
WFC2HV-29-4B	1	795	636 - 666	6-3/16	1-13/16	4	1-1/8	1-9/16	2	5/8	4.125
WFC2HV-34-4B	1	954 - 1000	795	7-1/8	2-3/4	4	1-1/8	1-3/4	2	7/8	4.125
WFC2HV-36-4B	1	1033 - 1113	954	6-1/2	2	4	1-1/8	1-7/8	2-1/2	3/4	4.625
WFC2HV-37-4B	1	1113 - 1192	1033.5	6-1/2	2	4	1-1/8	1-7/8	2-1/2	3/4	4.625
WFC2HV-39-4B	1	1250 - 1300	1113 - 1192	6-1/2	2	4	1-1/8	1-7/8	2-1/2	3/4	4.625
WFC2HV-39-6B	2			6-1/2	2	6	1-1/8	1-7/8	2-1/2	3/4	6.500
WFC2HV-41-4B	1	1351 - 1431	1192 - 1272	6-7/8	2-1/2	4	1-1/8	1-3/4	2-1/2	3/4	3.625
WFC2HV-41-6B	2			6-7/8	2-1/2	6	1-1/8	1-3/4	2-1/2	3/4	6.400
WFC2HV-43-4B	1	1590	1351 - 1431	7	2-3/4	4	1-1/8	1-7/8	2-1/4	3/4	4.875
WFC2HV-43-6B	2			7-1/4	2-3/4	6	1-1/8	1-7/8	2-1/4	3/4	7.400
WFC2HV-46-4B	1	1700 - 1750	1510 - 1590	7-1/8	2-3/4	4	1-1/8	2-1/4	3	1	7.125
WFC2HV-46-6B	2			7-1/8	2-5/8	6	1-1/8	2-1/16	3	13/16	5.500
WFC2HV-49-4B	1	2000	1780 - 2034	7-1/4	2-3/4	4	1-1/8	2-1/4	3	1-1/8	6.825
WFC2HV-49-6B	2			7-1/8	2-5/8	6	1-1/8	2-1/16	3	13/16	7.500
WFC2HV-50-4B	1	2303	2156 - 2167	7-1/8	2-3/4	4	1-1/8	2-1/4	3	1	6.125
WFC2HV-50-6B	2			7-1/8	2-3/4	6	1-1/8	2-1/4	3	1	8.800
WFC2HV-52-4B	1	2500	2312	7-1/4	2-3/4	4	1-1/8	2-3/16	3	1-1/16	8.625
WFC2HV-52-6B	2			7-1/4	2-3/4	6	1-1/8	2-1/4	3	1	9.000
WFC2HV-53-4B	1	2750	2515	7-1/4	2-3/4	4	1-1/8	2-3/16	3	1-1/16	8.625
WFC2HV-53-6B	2			7-1/4	2-3/4	6	1-1/8	2-1/4	3	1	9.000