

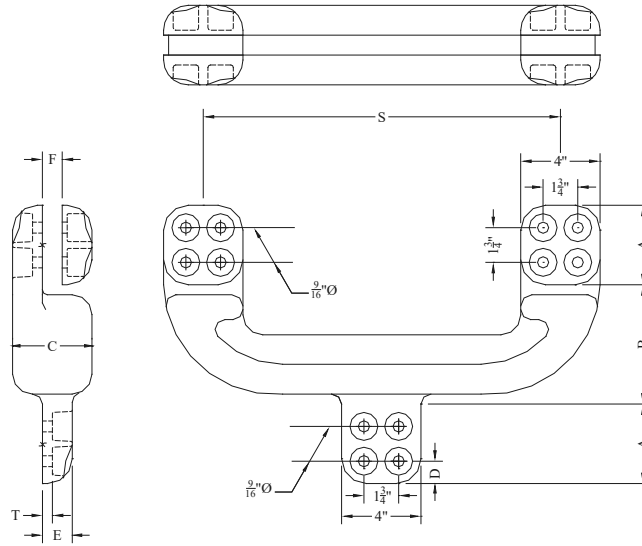
# EHV TERMINALS

## TYPE AFBH

Horizontal Bifurcating  
Flat To Flat

Casting: 356-T6 Aluminum  
Options: See Page 242

Designed for corona-free service at 500 KV when used with two EHV terminal connectors to form a bifurcating connection. Furnished with hardware shields as shown.



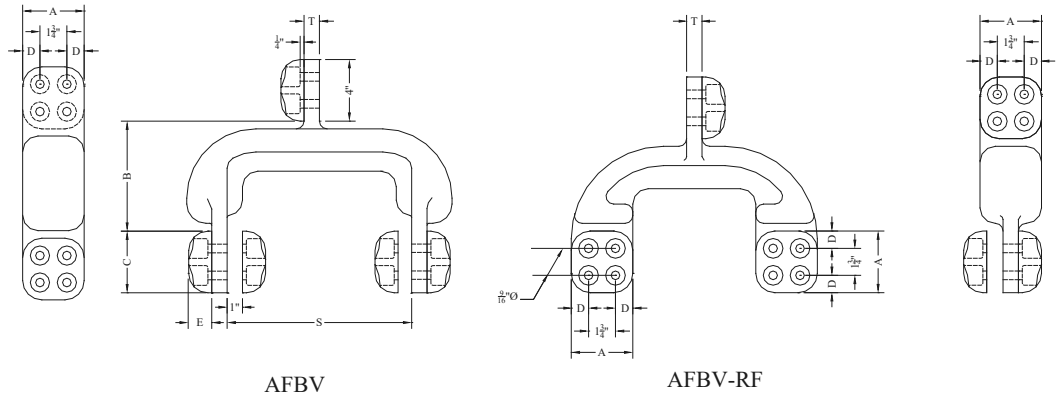
CATALOG NUMBER	DIMENSIONS - INCHES								WEIGHT (POUNDS)
	A	B	C	D	E	F	S	T	
AFBH-12	4	6	4	1-1/8	1-1/2	1	12	1/2	21.30
AFBH-18	4	6	4	1-1/8	1-1/2	1	18	1/2	25.60

## TYPE AFBV

Vertical Bifurcating  
Flat To Flat

Castings: 356-T6 Aluminum  
Options: See Page 242

Vertically-oriented bifurcating terminal for 500 KV service, similar to the type AFBH above. Hardware shields to the type AFBH above. Hardware shields are furnished as shown. Type AFBV-RF has bifurcated pads rotated 90° to plane of rear pad, along the same axis.



CATALOG NUMBER	DIMENSION - INCHES								WEIGHT (POUNDS)
	A	B	C	D	E	F	S	T	
AFBV-12	4	7	4	1-1/8	2-1/2	1	12	1	26.10
AFBV-18	4	7	4	1-1/8	2-1/2	1	18	1	28.40
AFBV-RF-12	4	7	4	1-1/8	2-1/2	1	12	1	22.60
AFBV-RF-18	4	7	4	1-1/8	2-1/2	1	18	1	26.30