

ALUMINUM MISCELLANEOUS

TYPE ABIR

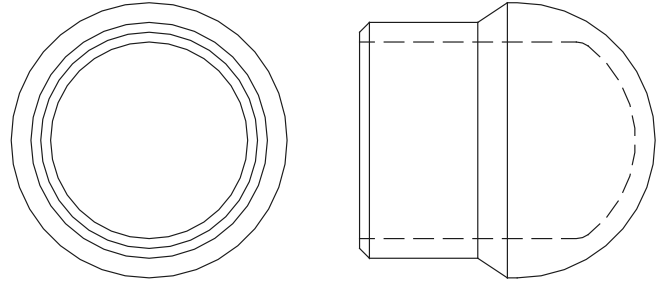
Welded Internal Fit
End Bell

Welded aluminum internal fit corona bell for 15-230 KV range pipe.

Add suffix (H) for schedule 80 pipe.
Example: ABIR-39H

Castings: 356-T6 Aluminum

| CATALOG NUMBER | CONDUCTOR SIZE NPS |
|----------------|--------------------|
| ABIR-39 | 1 |
| ABIR-49 | 1-1/4 |
| ABIR-53 | 1-1/2 |
| ABIR-58 | 2 |
| ABIR-60 | 2-1/2 |
| ABIR-62 | 3 |
| ABIR-63 | 3-1/2 |
| ABIR-64 | 4 |
| ABIR-67 | 5 |
| ABIR-69 | 6 |

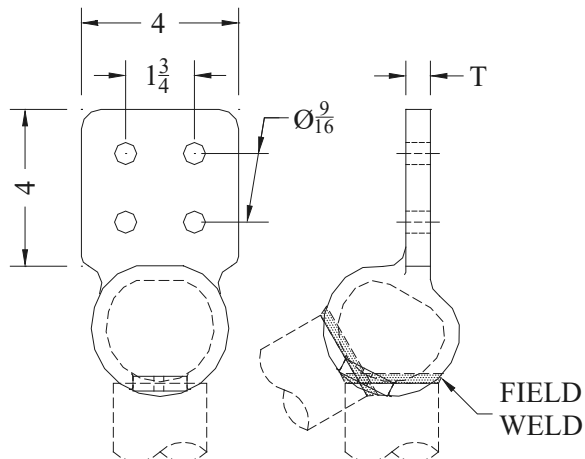


TYPE WFTIR

Angle Weldment
Terminal

Aluminum welded variable angle terminal. Note that the angles are limited by the conductor size.
Contact factory for further information.

Castings: 356-T6 Aluminum



| CATALOG NUMBER | PIPE SIZE | NPS | LIMITED ANGLE | NPS | LIMITED ANGLE | T |
|----------------|-----------------|--------|---------------|-----|---------------|------|
| WFTIR-6062-4B | 2-1/2" - 3" NPS | 2-1/2" | 0 - 55° | 3" | 0 - 60° | 5/8" |
| WFTIR-6467-4B | 4" - 5" NPS | 4" | 0 - 40° | 5" | 0 - 60° | 1" |