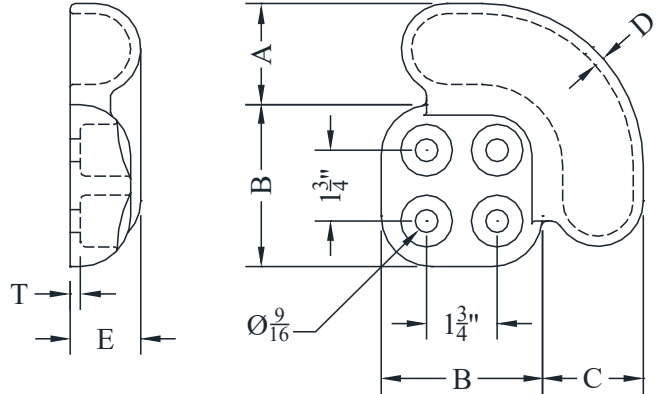


EHV TERMINALS

TYPE AA-1207 90° Hardware Shield

Casting: 356-F Aluminum

This 4" x 4' hardware shield is designed for 90° take-off for 345kV and below. It is generally used in pairs. Additional shielding may be required at 500kV. It is not necessary that terminal pad corners be rounded when using this shield.

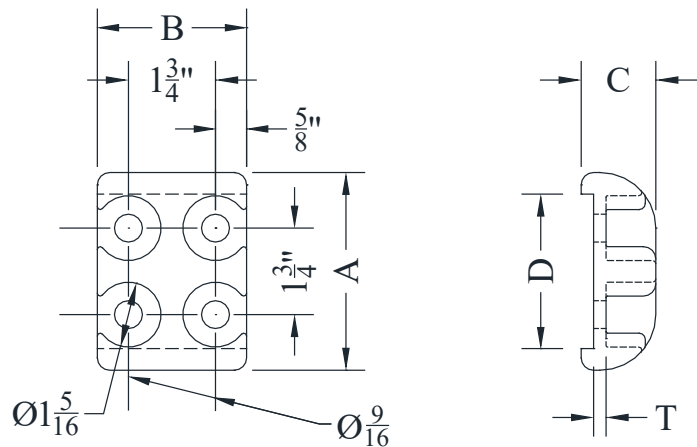


CATALOG NUMBER	DIMENSIONS - INCHES						WEIGHT (POUNDS)
	A	B	C	D	E	T	
AA-1207	2-1/2	4	2-1/2	4	1-3/4	1/4	2.50

TYPE AA-1520 Hardware Shield

Casting: 356-F Aluminum

This hardware shield is designed to shield pad mounting hardware on in-line 230kV connections on NEMA 3" x 3" pads.



CATALOG NUMBER	DIMENSIONS - INCHES					WEIGHT (POUNDS)
	A	B	C	D	T	
AA-1520	4	3	1-1/2	3-1/8	1/4	1.00