

# EHV TERMINALS

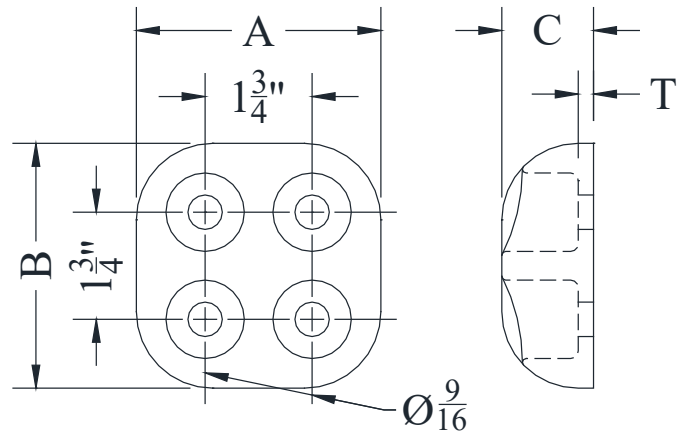
ALUMINUM • 345 - 500kV

## TYPE AA-1094

Hardware Shield

Casting: 356-F Aluminum

This 4" x 4" hardware shield is designed to shield pad mounting hardware on in-line 345 and 500kV connections. The pad has NEMA drilling.



ACCOMMODATES  $\text{Ø}1\frac{1}{4}$  WASHER

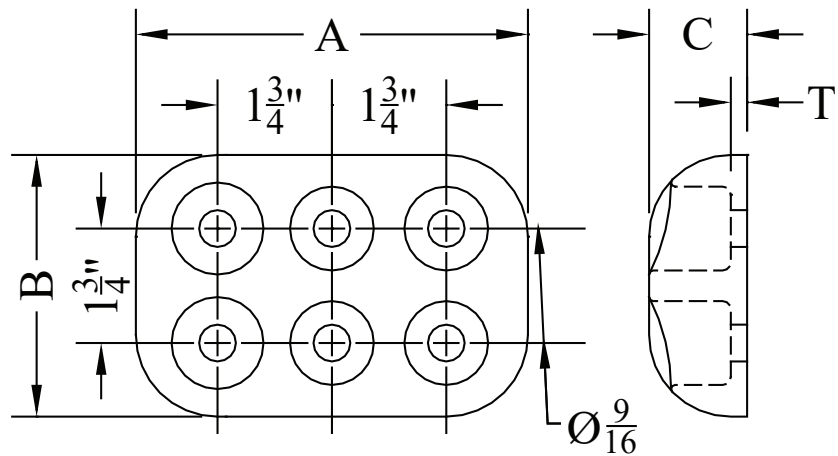
CATALOG NUMBER	DIMENSIONS - INCHES				WEIGHT (POUNDS)
	A	B	C	T	
AA-1094	4	4	1-1/2	1/4	1.13

## TYPE HS-6B

Hardware Shield

Casting: 356-F Aluminum

This 6" x 4" hardware shield is designed to shield pad mounting hardware on in-line 345 and 500kV connections. The pad has NEMA drilling.



ACCOMMODATES  $\text{Ø}1\frac{1}{4}$  WASHER

CATALOG NUMBER	DIMENSIONS - INCHES				WEIGHT (POUNDS)
	A	B	C	T	
HS-6B	6	4	1-1/2	1/4	2.00