

# ALUMINUM MISCELLANEOUS

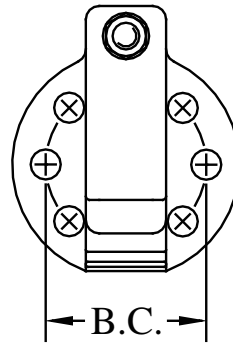
## TYPE ASUA

Horizontal Bus Support UABC  
To Insulator

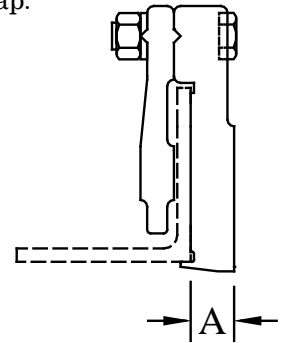
Castings: 356-T6 Aluminum  
Hardware: Stainless Steel

Aluminum bolted bus support for UABC single run. It can be used for slip or rigid fit. The -SE suffix can be removed if used in a rigid fit only application. Bolts have hex stops for one wrench installation. Contact factory for further information.

CATALOG NUMBER	CONDUCTOR SIZE UABC	B.C.	A
ASUA-325-3-SE	1/4" x 3-1/4" x 3-1/4"	3"	13/16"
ASUA-325-5-SE	1/4" x 3-1/4" x 3-1/4"	5"	7/8"
ASUA-400-3-SE	1/4" x 4" x 4"	3"	13/16"
ASUA-400-5-SE	1/4" x 4" x 4"	5"	7/8"
ASUA-400H-3-SE	3/8" x 4" x 4"	3"	13/16"
ASUA-400H-5-SE	3/8" x 4" x 4"	5"	7/8"



Slip fit shown.  
For clamp fit  
invert cap.

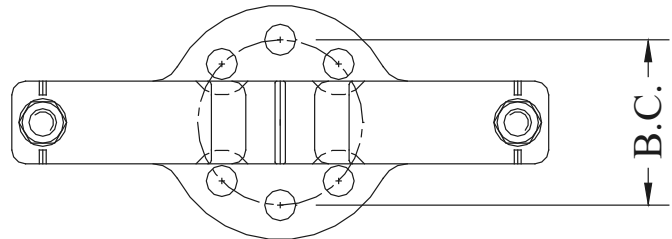


\* Tee's, couplers, splice assemblies, expansions, terminals and customer specs. For aluminum angle are also available upon request.

## TYPE ASUA2

Horizontal Bolted (2) UABC  
To Insulator

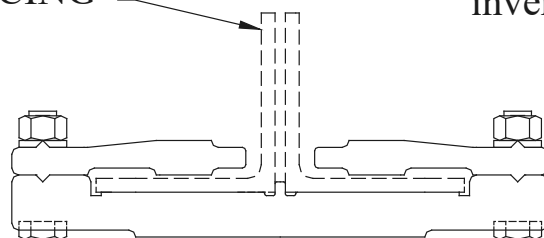
Castings: 356-T6 Aluminum  
Hardware: Stainless Steel



3 1/4 x 3 1/4 x 1/4 UABC  
WITH 1/4 SPACING

Slip fit shown.  
For clamp fit  
invert cap.

CATALOG NUMBER	CONDUCTOR SIZE UABC	B.C.
ASUA2-325-3	(2) 3-1/4" x 3-1/4"	3
ASUA2-325-5	(2) 3-1/4" x 3-1/4"	5



\* Tee's, couplers, splice assemblies, expansions, terminals and customer specs. For aluminum angle are also available upon request.