

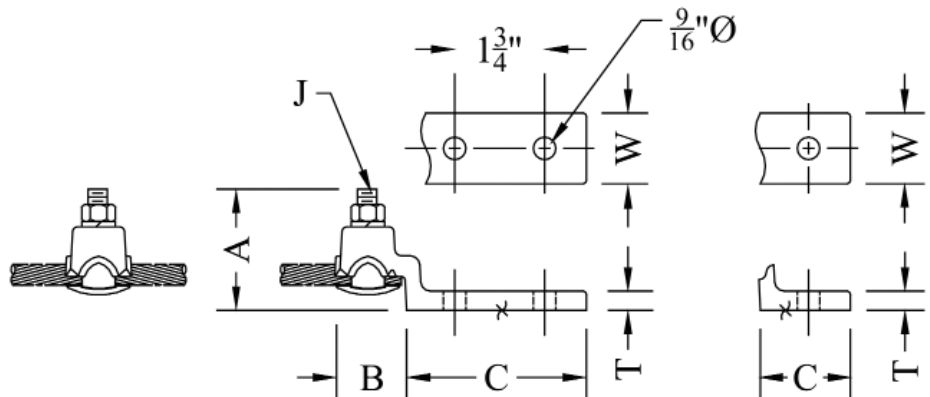
# BRONZE MISCELLANEOUS

## TYPE UMX

Bronze "I" Bolt  
Terminal

Castings: Electrical Bronze  
"I" Bolt: Aluminum Bronze/Tinned

Bronze single "I" bolt terminal for connecting copper cable to copper f at.  
Cable entrance straight on or 90° to f at.  
Contact factory for further information.



CATALOG NUMBER	CONDUCTOR RANGE	HOLES IN PAD	DIMENSIONS-INCHES					
			A	B	C	J	W	T
UMX-4048-1	#8 SOL - 2/0 STR	1	2-5/8	1-3/8	1-3/8	3/8	3/4	5/16
UMX-4151-1	#6 - 250 MCM	1	3-1/4	2-15/16	1-1/4	1/2	1-3/8	5/16
UMX-4151-2N	#6 - 250 MCM	2	3-1/4	2-15/16	3	1/2	1-3/8	5/16
UMX-4756-1	1/0 STR. - 500 MCM	1	3-7/16	3-1/8	1-5/8	1/2	1-3/8	3/8
UMX-4756-2N	1/0 STR. - 500 MCM	2	3-7/16	3-5/16	3	1/2	2	3/8

## TYPE GLT-12

Equipment Grounding Terminal

Castings: Electrical bronze  
Hardware: Silicon bronze

A through-type grounding terminal for apparatus grounding pads having tapped holes on a NEMA 2-hole pattern. Connector allows continuity of the ground conductor where required.  
Conductor sizes: #6 STR. through 250 MCM.

