

# ALUMINUM BUS SUPPORTS

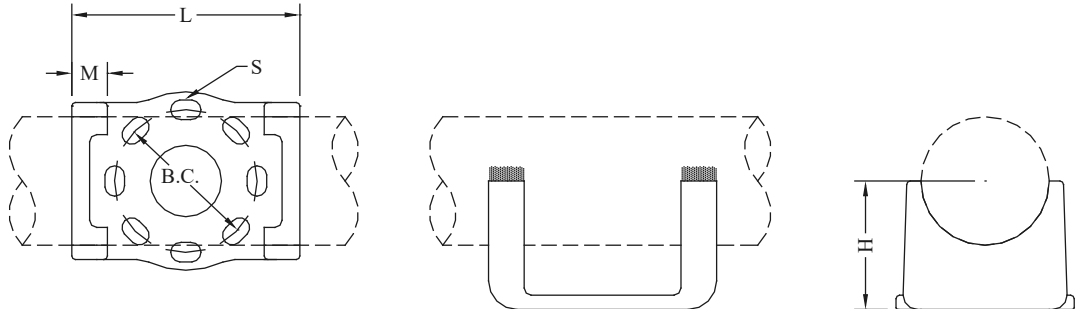
## TYPE WRTI

Horizontal Weldment  
Pipe to Insulator

Aluminum alloy, horizontal weldment, bus support for aluminum pipe.  
Designed for rigid applications.

Hardware supplied for CAP mounting. For PIN mounting, add suffix (P)  
to catalog number. Example: WRTI-58-3P

Castings: 356-T6 Aluminum  
Mounting Hardware: Galvanized Steel



CATALOG NUMBER	PIPE SIZE (NPS)	B.C.	DIMENSIONS-INCHES				WEIGHT (POUNDS)
			H	L	M	S	
WRTI-30-3	3/4	3	2	5-1/2	1/2	9/16 x 13/16	0.80
WRTI-30-5		5	2-1/4	9-1/4	1/2	11/16 x 1	1.10
WRTI-39-3	1	3	2	5-1/2	5/8	9/16 x 13/16	0.90
WRTI-39-5		5	2	9-1/4	5/8	11/16 x 1	1.25
WRTI-49-3	1-1/4	3	2-1/4	5-1/2	5/8	9/16 x 13/16	1.15
WRTI-49-5		5	2-3/8	9-1/4	1-1/8	11/16 x 1	1.75
WRTI-53-3	1-1/2	3	2-1/2	5-1/2	5/8	9/16 x 13/16	1.45
WRTI-53-5		5	2-1/2	9-1/4	5/8	11/16 x 1	1.85
WRTI-58-3	2	3	2-3/4	5-3/4	3/4	9/16 x 13/16	1.65
WRTI-58-5		5	2-3/4	7-1/2	3/4	11/16 x 15/16	2.25
WRTI-60-3	2-1/2	3	3-1/8	6-1/4	1	9/16 x 13/16	1.90
WRTI-60-5		5	3-1/8	8	1	11/16 x 1-1/16	2.75
WRTI-62-3	3	3	3-5/8	5-3/4	5/8	9/16 x 13/16	2.40
WRTI-62-5		5	3-5/8	9	1-1/8	11/16 x 15/16	4.00
WRTI-62-7		7	3-5/8	11-1/4	1-1/8	13/16 x 1-3/16	7.00
WRTI-63-3	3-1/2	3	4	6	5/8	9/16 x 13/16	2.40
WRTI-63-5		5	4	7-1/2	1-1/8	11/16 x 15/16	2.75
WRTI-63-7		7	4	10-1/2	1-1/8	13/16 x 1-3/16	7.00
WRTI-64-3	4	3	4-1/2	6-3/4	1	9/16 x 13/16	2.65
WRTI-64-5		5	4-1/2	8	1-1/4	11/16 x 1-1/16	5.75
WRTI-64-7		7	4-1/2	11-1/8	3/4	13/16 x 1-3/16	6.50
WRTI-67-3	5	3	5	6-1/4	5/8	9/16 x 13/16	4.45
WRTI-67-5		5	5	8-1/4	1-1/4	11/16 x 1-1/16	6.75
WRTI-67-7		7	5	12	1-1/4	13/16 x 1-3/16	7.85
WRTI-69-5	6	5	5-3/8	7-1/4	1	11/16 x 13/16	3.45
WRTI-69-5		5	5-1/2	8-3/4	1	11/16 x 1-1/16	4.25
WRTI-69-7		7	5-1/2	13-1/4	2	13/16 x 1-1/8	11.50