

# ALUMINUM MISCELLANEOUS

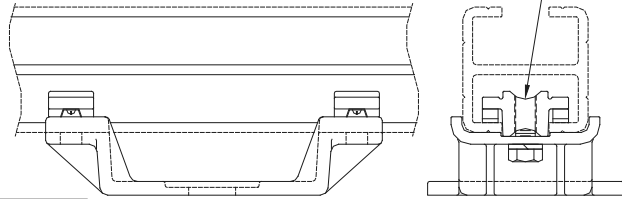
## TYPE ASIW

Horizontal Bolted IWCB  
To Insulator

Castings: 356-T6 Aluminum  
Hardware: Aluminum Alloy

Aluminum bus support for slip or rigid fit for IWCB.  
Contact factory for further information.

FOR RIGID FIT, INVERT CLAMPING  
LUGS FROM POSITION SHOWN



CATALOG NUMBER	CONDUCTOR SIZE IWCB	DIMENSIONS - INCHES	
		B.C.	H
ASIW-63-3	4" X 4" OR 4" X 6"	3"	2
ASIW-63-5		5"	2
ASIW-63-7		7"	2

## TYPE ASIWP

Horizontal Bolted IWCB  
To Insulator

Castings: 356-T6 Aluminum  
Hardware: Aluminum Alloy  
Base: Fabricated 6061-T6

Aluminum bus support for slip or rigid fit for IWCB cast & fabricated.  
Contact factory for further information.

CATALOG NUMBER	FIG. NO.	CONDUCTOR SIZE IWCB	B.C. INCHES
ASIWP-63-3	1	4" X 4" or 4" X 6"	3"
ASIWP-63-3R	2		3"
ASIWP-63-5	1		5"
ASIWP-63-5R	2		5"
ASIWP-63-7	1		7"
ASIWP-63-7R	2		7"
ASIWP-68-3	1		6" X 6" or 5" X 8" or 8" X 8"
ASIWP-68-3R	2	3"	
ASIWP-68-5	1	5"	
ASIWP-68-5R	2	5"	
ASIWP-68-7	1	7"	
ASIWP-68-7R	2	7"	
ASIWP-715-3	1	9" X 9"	
ASIWP-715-3R	2		3"
ASIWP-715-5	1		5"
ASIWP-715-5R	2		5"
ASIWP-715-7	1		7"
ASIWP-715-7R	2		7"
ASIWP-717-3	1		10" X 10"
ASIWP-717-3R	2	3"	
ASIWP-717-5	1	5"	
ASIWP-717-5R	2	5"	
ASIWP-717-7	1	7"	
ASIWP-717-7R	2	7"	

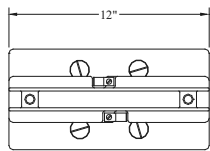


FIGURE 1

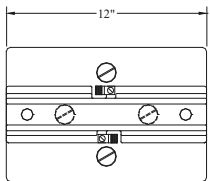
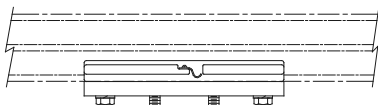


FIGURE 2

