

ALUMINUM BUS SUPPORTS

TYPE WCTI

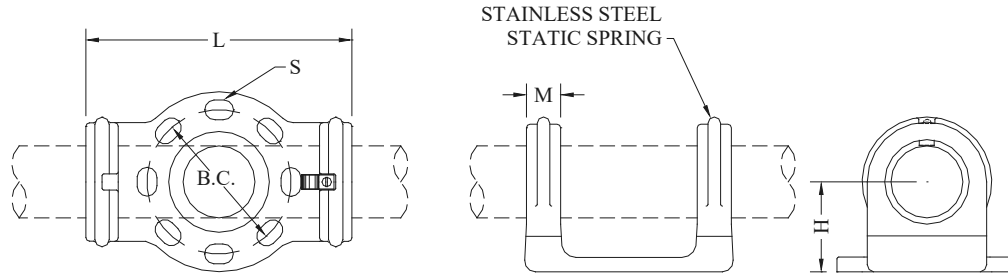
Horizontal Weldment
Pipe to Insulator

Aluminum alloy, horizontal weldment, bus support for aluminum pipe. Designed for slip or rigid fit applications. When rigid fit is required you must weld the rings to the pipe.

Hardware supplied for CAP mounting. For PIN mounting, add suffix (P) to catalog number. Example: WCTI-58-3P

Casting: 356-T6 Aluminum

Mounting Hardware: Galvanized Steel



CATALOG NUMBER	PIPE SIZE (NPS)	B.C.	DIMENSIONS-INCHES				WEIGHT (POUNDS)
			H	L	M	S	
WCTI-30-3	3/4	3	2	7-1/4	1-1/8	9/16 x 13/16	2.95
WCTI-30-5		5	2-1/4	9-1/4	1-1/8	11/16 x 1	3.80
WCTI-39-3	1	3	2	5-3/4	5/8	9/16 x 13/16	1.40
WCTI-39-5		5	2-1/4	8	5/8	11/16 x 15/16	2.30
WCTI-49-3	1-1/4	3	2-1/4	7-1/4	1-1/8	9/16 x 13/16	2.95
WCTI-49-5		5	2-3/8	9-1/4	1-1/8	11/16 x 1	3.80
WCTI-53-3	1-1/2	3	2-1/2	7-1/4	1-1/8	9/16 x 13/16	3.45
WCTI-53-5		5	2-1/2	9-1/4	1-1/8	11/16 x 1	4.30
WCTI-58-3	2	3	2-3/4	7-1/4	1-3/16	9/16 x 13/16	3.95
WCTI-58-5		5	2-3/4	9-1/4	1-1/8	11/16 x 1	4.80
WCTI-60-3	2-1/2	3	3-1/8	7-1/4	1-1/8	9/16 x 13/16	3.95
WCTI-60-5		5	3-1/8	9-1/4	1-1/8	11/16 x 1	4.80
WCTI-62-3	3	3	3-5/8	7-1/4	1-3/16	9/16 x 13/16	3.95
WCTI-62-5		5	3-5/8	9-1/4	1-3/16	11/16 x 1	4.80
WCTI-62-7		7	3-5/8	12-1/2	1-3/16	13/16 x 1-1/8	7.00
WCTI-63-3	3-1/2	3	4	7-1/4	1-3/16	9/16 x 13/16	4.95
WCTI-63-5		5	4	9-1/4	1-3/16	11/16 x 1	5.80
WCTI-63-7		7	4	12-1/2	1-3/16	13/16 x 1-1/8	8.00
WCTI-64-3	4	3	4-1/2	7-1/4	1-3/16	9/16 x 13/16	5.45
WCTI-64-5		5	4-1/2	9-1/4	1-3/16	11/16 x 1	6.30
WCTI-64-7		7	4-1/2	12-1/2	1-1/4	13/16 x 1-1/8	8.50
WCTI-67-3	5	3	5	7-3/8	1-1/2	9/16 x 13/16	6.95
WCTI-67-5		5	5	9-1/2	1-1/2	11/16 x 1	7.80
WCTI-67-7		7	5	12-3/4	1-1/2	13/16 x 1-1/8	10.00
WCTI-69-3	6	3	5-1/2	8	2	9/16 x 13/16	8.45
WCTI-69-5		5	5-1/2	10	2	11/16 x 15/16	9.30
WCTI-69-7		7	5-1/2	13-1/4	2	13/16 x 1-1/8	11.50