

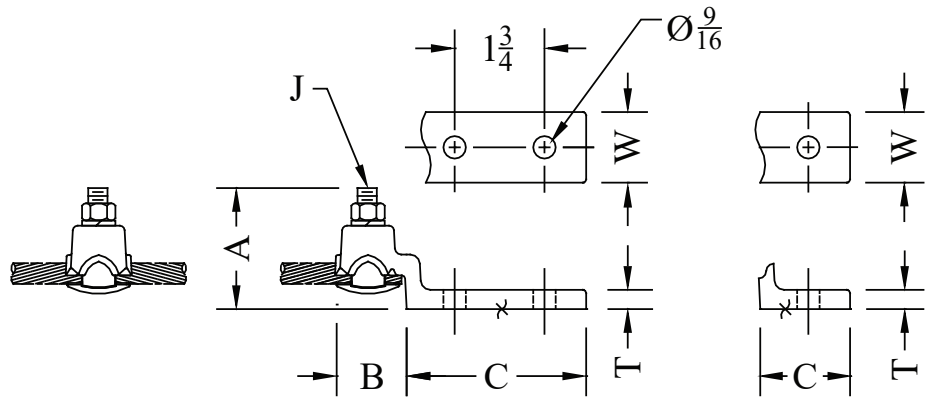
BRONZE MISCELLANEOUS

TYPE UMX

Bronze "I" Bolt
Terminal

Bronze single "I" bolt terminal for connecting copper cable to copper flat.
Cable entrance straight on or 90° to flat.
Contact factory for further information.

Castings: Electrical Bronze
"I" Bolt: Aluminum Bronze/Tinned



CATALOG NUMBER	CONDUCTOR RANGE	HOLES IN PAD	DIMENSIONS-INCHES					
			A	B	C	J	W	T
UMX-4048-1	#8 SOL - 2/0 STR	1	2-5/8	1-3/8	1-3/8	3/8	3/4	5/16
UMX-4151-1	#6 - 250 MCM	1	3-1/4	2-15/16	1-1/4	1/2	1-3/8	5/16
UMX-4151-2N	#6 - 250 MCM	2	3-1/4	2-15/16	3	1/2	1-3/8	5/16
UMX-4756-1	1/0 STR. - 500 MCM	1	3-7/8	3-1/8	1-5/8	1/2	1-3/8	3/8
UMX-4756-2N	1/0 STR. - 500 MCM	2	3-7/8	3-5/16	3	1/2	2	3/8

TYPE GLT-12

Equipment Grounding Terminal

A through-type grounding terminal for apparatus grounding pads having tapped holes on a NEMA 2-hole pattern. Connector allows continuity of the ground conductor where required.
Conductor sizes: #6 STR. through 250 MCM.

Castings: Electrical bronze
Hardware: Silicon bronze

