

# ALUMINUM MISCELLANEOUS

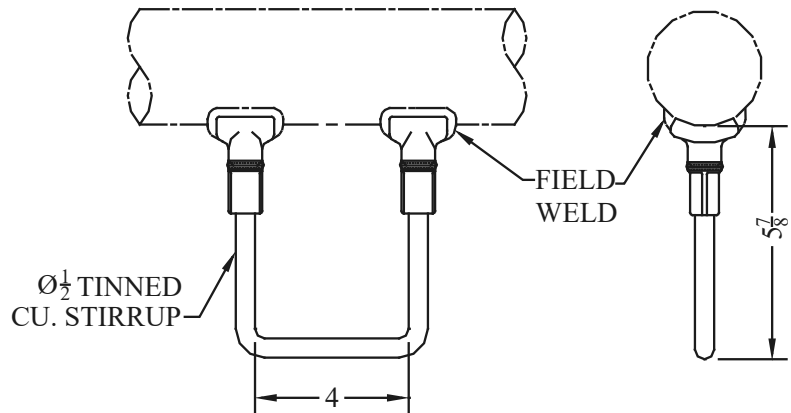
## TYPE AHL SW

Welded Hot Line  
Stirrup

Castings: 356-T6 Aluminum  
Stirrup: Tinned Copper  
Ferrule: 1100-0 Aluminum

CATALOG NUMBER	CONDUCTOR SIZE
AHLSW-6064	2" - 6" NPS
AHLSW-6769	5" - 6" NPS
AHLSW-UABC	ALUM ANGLE OR BAR

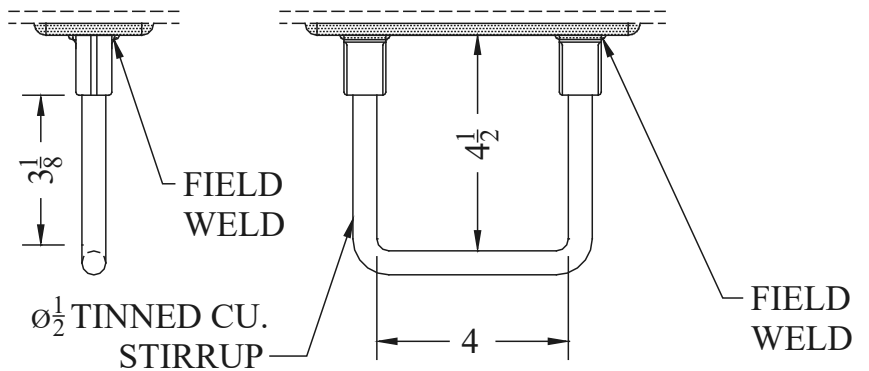
Aluminum welded hot line stirrup



## TYPE AHL SW-UABC

Welded Hot Line Stirrup  
For Flat Aluminum,  
Bar, UABC, Etc.

Castings: 356-T6 Aluminum  
Stirrup: Tinned Copper  
Ferrule: 1100-0 Aluminum



## TYPE AHL S-UABC

Bolted Hot Line Stirrup  
For Flat Aluminum,  
Bar, UABC, Etc.

Castings: 356-T6 Aluminum  
Stirrup: Tinned Copper  
Ferrule: 1100-0 Aluminum  
Hardware: Aluminum

