

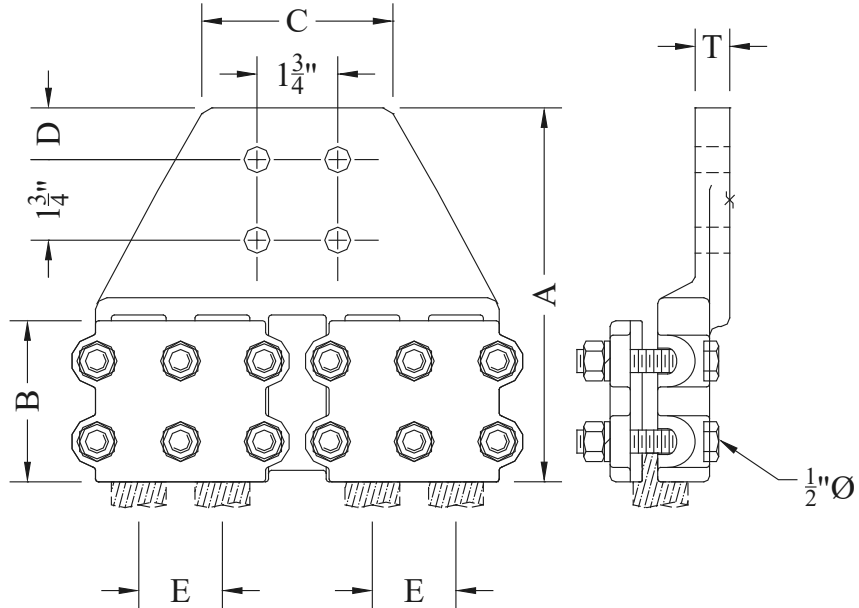
BRONZE TERMINALS

TYPE FNCT4

Straight Bolted
Four Cables to Flat

Castings: Electrical Bronze
Hardware: Silicon Bronze
Options: See Page 194

Bronze alloy terminal with hex head clamping bolts for connecting four copper cables to flat. Clamping bolts have hex-stops for one-wrench installation. Flat pads have NEMA drilling.
Angle connectors may be obtained by specifying desired angle.
Example: FNCT490-20-4B



CATALOG NUMBER	CONDUCTOR RANGE	DIMENSIONS - INCHES						WEIGHT (POUNDS)
		A	B	C	D	E	T	
FNCT4-12-4A	#6 STR - 250 MCM	CONTACT FACTORY FOR DETAILS						
FNCT4-12-4B								
FNCT4-20-4A	1/0 SOL - 500 MCM	CONTACT FACTORY FOR DETAILS						
FNCT4-20-4B								
FNCT4-34-4A	500-1000 MCM	7-5/8	3-1/2	4	5/8	1-13/16	3/4	22.50
FNCT4-34-4B		8-1/8	3-1/4	4	1-1/8	1-13/16	3/4	22.50
FNCT4-42-4B	1000-1500 MCM	CONTACT FACTORY FOR DETAILS						
FNCT4-42-6B								
FNCT4-48-4B	1000 - 2000 MCM	CONTACT FACTORY FOR DETAILS						
FNCT4-48-6B								